

BLC (S-14): sc-323510

BACKGROUND

BLC, also known as SCYB13, BCA1 or CXCL13 (C-X-C motif chemokine 13), is a 109 amino acid protein that belongs to the intercrine α (chemokine CXC) family. BLC is a secreted protein with highest levels expressed in liver, followed by spleen, lymph node, appendix and stomach. Low levels of BLC are found in salivary gland, mammary gland and fetal spleen. BLC is required for the architectural organization of B cells within lymphoid follicles, apparently by stimulating calcium influx into, and chemotaxis of, cells expressing Burkitt's lymphoma receptor 1 (BLR-1). Chemokines constitute a family of small (approximately 8 to 14 kDa) chemotactic cytokines that direct the migration of leukocytes during inflammation and may be involved in the constitutive homing of lymphocytes into follicles and T-cell zones. Chemokines act through interactions with a subset of seven transmembrane G protein-coupled receptors.

REFERENCES

1. Online Mendelian Inheritance in Man, OMIM[™]. 2000. Johns Hopkins University, Baltimore, MD. MIM Number: 605149. World Wide Web URL: <http://www.ncbi.nlm.nih.gov/omim/>
2. King, M., Poya, H., Rao, J., Natarajan, S., Butch, A.W., Aziz, N., Kok, S., Chang, M.H., Lyons, J.M., Ault, K. and Kelly, K.A. 2009. CXCL13 expression in *Chlamydia trachomatis* infection of the female reproductive tract. *Drugs Today* 45: 125-134.
3. Rupprecht, T.A., Plate, A., Adam, M., Wick, M., Kastenbauer, S., Schmidt, C., Klein, M., Pfister, H.W. and Koedel, U. 2009. The chemokine CXCL13 is a key regulator of B cell recruitment to the cerebrospinal fluid in acute Lyme neuroborreliosis. *J. Neuroinflammation* 6: 42.
4. Sellebjerg, F., Börnsen, L., Khademi, M., Krakauer, M., Olsson, T., Frederiksen, J.L. and Sørensen, P.S. 2009. Increased cerebrospinal fluid concentrations of the chemokine CXCL13 in active MS. *Neurology* 73: 2003-2010.
5. Patadia, M., Dixon, J., Conley, D., Chandra, R., Peters, A., Suh, L.A., Kato, A., Carter, R., Harris, K., Grammer, L., Kern, R. and Schleimer, R. 2010. Evaluation of the presence of B-cell attractant chemokines in chronic rhinosinusitis. *Am. J. Rhinol. Allergy* 24: 11-16.

CHROMOSOMAL LOCATION

Genetic locus: CXCL13 (human) mapping to 4q21.1.

SOURCE

BLC (S-14) is an affinity purified goat polyclonal antibody raised against a peptide mapping at the C-terminus of BLC of human origin.

PRODUCT

Each vial contains 200 μ g IgG in 1.0 ml of PBS with < 0.1% sodium azide and 0.1% gelatin.

Blocking peptide available for competition studies, sc-323510 P, (100 μ g peptide in 0.5 ml PBS containing < 0.1% sodium azide and 0.2% BSA).

RESEARCH USE

For research use only, not for use in diagnostic procedures.

APPLICATIONS

BLC (S-14) is recommended for detection of BLC of human origin by Western Blotting (starting dilution 1:200, dilution range 1:100-1:1000), immunoprecipitation [1-2 μ g per 100-500 μ g of total protein (1 ml of cell lysate)], immunofluorescence (starting dilution 1:50, dilution range 1:50-1:500) and solid phase ELISA (starting dilution 1:30, dilution range 1:30-1:3000).

Suitable for use as control antibody for BLC siRNA (h): sc-39344, BLC shRNA Plasmid (h): sc-39344-SH and BLC shRNA (h) Lentiviral Particles: sc-39344-V.

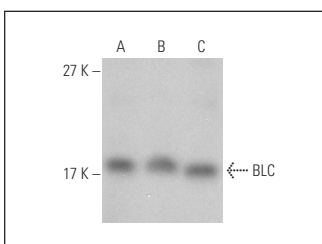
Molecular Weight of BLC: 13 kDa.

Positive Controls: Hep G2 cell lysate: sc-2227, Jurkat whole cell lysate: sc-2204 or HEK293 whole cell lysate: sc-45136.

RECOMMENDED SECONDARY REAGENTS

To ensure optimal results, the following support (secondary) reagents are recommended: 1) Western Blotting: use donkey anti-goat IgG-HRP: sc-2020 (dilution range: 1:2000-1:100,000) or Cruz Marker[™] compatible donkey anti-goat IgG-HRP: sc-2033 (dilution range: 1:2000-1:5000), Cruz Marker[™] Molecular Weight Standards: sc-2035, TBS Blotto A Blocking Reagent: sc-2333 and Western Blotting Luminol Reagent: sc-2048. 2) Immunoprecipitation: use Protein A/G PLUS-Agarose: sc-2003 (0.5 ml agarose/2.0 ml). 3) Immunofluorescence: use donkey anti-goat IgG-FITC: sc-2024 (dilution range: 1:100-1:400) or donkey anti-goat IgG-TR: sc-2783 (dilution range: 1:100-1:400) with UltraCruz[™] Mounting Medium: sc-24941.

DATA



BLC (S-14): sc-323510. Western blot analysis of BLC expression in Jurkat (A), Hep G2 (B) and HEK293 (C) whole cell lysates.

STORAGE

Store at 4° C, ****DO NOT FREEZE****. Stable for one year from the date of shipment. Non-hazardous. No MSDS required.

PROTOCOLS

See our web site at www.scbt.com or our catalog for detailed protocols and support products.



Try **BLC (946): sc-73740**, our highly recommended monoclonal alternative to BLC (S-14).