

CCDC162 (M-19): sc-323669

BACKGROUND

Making up nearly 6% of the human genome, chromosome 6 contains around 1,200 genes within 170 million base pairs of sequence. Deletion of a portion of the q arm of chromosome 6 is associated with early onset intestinal cancer suggesting the presence of a cancer susceptibility locus. Porphyria cutanea tarda is associated with chromosome 6 through the HFE gene which, when mutated, predisposes an individual to developing this porphyria. Notably, the PARK2 gene, which is associated with Parkinson's disease, and the genes encoding the major histocompatibility complex proteins, which are key molecular components of the immune system and determine predisposition to rheumatic diseases, are also located on chromosome 6. Stickler syndrome, 21-hydroxylase deficiency and maple syrup urine disease are also associated with genes on chromosome 6. A bipolar disorder susceptibility locus has been identified on the q arm of chromosome 6.

REFERENCES

- Mungall, A.J., Palmer, S.A., Sims, S.K., Edwards, C.A., Ashurst, J.L., Wilming, L., Jones, M.C., Horton, R., Hunt, S.E., Scott, C.E., Gilbert, J.G.R., Clamp, M.E., Bethel, G., Milne, S., Ainscough, R., Almeida, J.P., Ambrose, K.D., et al. 2003. The DNA sequence and analysis of human chromosome 6. *Nature* 425: 805-811.
- Vuoristo, M.M., Pappas, J.G., Jansen, V. and Ala-Kokko, L. 2004. A stop codon mutation in COL11A2 induces exon skipping and leads to non-ocular Stickler syndrome. *Am. J. Med. Genet. A* 130A: 160-164.
- McQueen, M.B., Devlin, B., Faraone, S.V., Nimgaonkar, V.L., Sklar, P., Smoller, J.W., Abou Jamra, R., Albus, M., et al. 2005. Combined analysis from eleven linkage studies of bipolar disorder provides strong evidence of susceptibility loci on chromosomes 6q and 8q. *Am. J. Hum. Genet.* 77: 582-595.
- Batts, K.P. 2007. Iron overload syndromes and the liver. *Mod. Pathol.* 20: S31-S39.
- Olsson, K.S., Ritter, B. and Hansson, N. 2007. The HLA-A1-B8 haplotype hitchhiking with the hemochromatosis mutation: does it affect the phenotype? *Eur. J. Haematol.* 79: 429-434.
- Park, E., Kim, S., Kim, S.J., Park, Y., Lee, J.S., Yoo, J.C., Kim, C.S., Kim do, K., Lee, S.Y., Chun, H.S. 2007. Modulation of parkin gene expression in noradrenergic neuronal cells. *Int. J. Dev. Neurosci.* 25: 491-497.
- Safadi, S.S. and Shaw, G.S. 2007. A disease state mutation unfolds the Parkin ubiquitin-like domain. *Biochemistry* 46: 14162-14169.
- Bläker, H., Mechttersheimer, G., Sutter, C., Hertkorn, C., Kern, M.A., Rieker, R.J., Penzel, R., Schirmacher, P. and Kloor, M. 2008. Recurrent deletions at 6q in early age of onset non-HNPCC- and non-FAP-associated intestinal carcinomas. Evidence for a novel cancer susceptibility locus at 6q14-q22. *Genes Chromosomes Cancer* 47: 159-164.

CHROMOSOMAL LOCATION

Genetic locus: *Ccdc162* (mouse) mapping to 10 B2.

RESEARCH USE

For research use only, not for use in diagnostic procedures.

SOURCE

CCDC162 (M-19) is an affinity purified goat polyclonal antibody raised against a peptide mapping near the C-terminus of CCDC162 of mouse origin.

PRODUCT

Each vial contains 200 µg IgG in 1.0 ml of PBS with < 0.1% sodium azide and 0.1% gelatin.

Blocking peptide available for competition studies, sc-323669 P, (100 µg peptide in 0.5 ml PBS containing < 0.1% sodium azide and 0.2% BSA).

APPLICATIONS

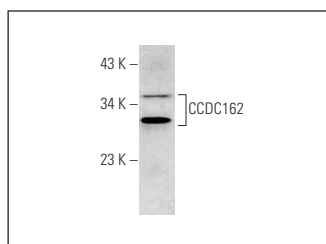
CCDC162 (M-19) is recommended for detection of CCDC162 of mouse and rat origin by Western Blotting (starting dilution 1:200, dilution range 1:100-1:1000), immunoprecipitation [1-2 µg per 100-500 µg of total protein (1 ml of cell lysate)], immunofluorescence (starting dilution 1:50, dilution range 1:50-1:500) and solid phase ELISA (starting dilution 1:30, dilution range 1:30-1:3000).

Positive Controls: mouse heart extract: sc-2254.

RECOMMENDED SECONDARY REAGENTS

To ensure optimal results, the following support (secondary) reagents are recommended: 1) Western Blotting: use donkey anti-goat IgG-HRP: sc-2020 (dilution range: 1:2000-1:100,000) or Cruz Marker™ compatible donkey anti-goat IgG-HRP: sc-2033 (dilution range: 1:2000-1:5000), Cruz Marker™ Molecular Weight Standards: sc-2035, TBS Blotto A Blocking Reagent: sc-2333 and Western Blotting Luminol Reagent: sc-2048. 2) Immunoprecipitation: use Protein A/G PLUS-Agarose: sc-2003 (0.5 ml agarose/2.0 ml). 3) Immunofluorescence: use donkey anti-goat IgG-FITC: sc-2024 (dilution range: 1:100-1:400) or donkey anti-goat IgG-TR: sc-2783 (dilution range: 1:100-1:400) with UltraCruz™ Mounting Medium: sc-24941.

DATA



CCDC162 (M-19): sc-323669. Western blot analysis of CCDC162 expression in mouse heart tissue extract.

STORAGE

Store at 4° C, ****DO NOT FREEZE****. Stable for one year from the date of shipment. Non-hazardous. No MSDS required.

PROTOCOLS

See our web site at www.scbt.com or our catalog for detailed protocols and support products.