

LOC727838 (T-16): sc-324067

BACKGROUND

The X chromosome gene product provisionally designated LOC727838 is pending further characterization. The X and Y chromosomes are the human sex chromosomes. Chromosome X consists of about 153 million base pairs and nearly 1,000 genes. The combination of an X and Y chromosome lead to normal male development while two copies of X lead to normal female development. There are a number of conditions related to an unusual number and combination of sex chromosomes being inherited. More than one copy of the X chromosome with a Y chromosome causes Klinefelter's syndrome. A single copy of X alone leads to Turner's syndrome. More than 2 copies of the X chromosome, in the absence of a Y chromosome, is known as triple X syndrome. Color blindness, hemophilia, and Duchenne muscular dystrophy are well known X chromosome-linked conditions which affect males more frequently as males carry a single X chromosome.

REFERENCES

1. Givens, J.R., Wilroy, R.S., Summitt, R.L., Andersen, R.N., Wisner, W.L. and Fish, S.A. 1975. Features of Turner's syndrome in women with polycystic ovaries. *Obstet. Gynecol.* 45: 619-624.
2. Bernardino-Sgherri, J., Flagiello, D. and Dutrillaux, B. 2002. Overall DNA methylation and chromatin structure of normal and abnormal X chromosomes. *Cytogenet. Genome Res.* 99: 85-91.
3. Ozcelik, T. 2002. Uncovering the complex mysteries of mosaicism. *Nature* 417: 588.
4. Muntoni, F., Torelli, S. and Ferlini, A. 2003. Dystrophin and mutations: one gene, several proteins, multiple phenotypes. *Lancet Neurol.* 2: 731-740.
5. Deeb, S.S. 2005. The molecular basis of variation in human color vision. *Clin. Genet.* 67: 369-377.
6. Bojesen, A., Kristensen, K., Birkebaek, N.H., Fedder, J., Mosekilde, L., Bennett, P., Laurberg, P., Frystyk, J., Flyvbjerg, A., Christiansen, J.S. and Gravholt, C.H. 2006. The metabolic syndrome is frequent in Klinefelter's syndrome and is associated with abdominal obesity and hypogonadism. *Diabetes Care* 29: 1591-1598.
7. Hayashi, T., Kubo, A., Takeuchi, T., Gekka, T., Goto-Omoto, S. and Kitahara, K. 2006. Novel form of a single X-linked visual pigment gene in a unique dichromatic color-vision defect. *Vis. Neurosci.* 23: 411-417.

CHROMOSOMAL LOCATION

Genetic locus: LOC727838 (human) mapping to Xq24.

SOURCE

LOC727838 (T-16) is an affinity purified goat polyclonal antibody raised against a peptide mapping within an internal region of LOC727838 of human origin.

PRODUCT

Each vial contains 200 µg IgG in 1.0 ml of PBS with < 0.1% sodium azide and 0.1% gelatin.

Blocking peptide available for competition studies, sc-324067 P, (100 µg peptide in 0.5 ml PBS containing < 0.1% sodium azide and 0.2% BSA).

APPLICATIONS

LOC727838 (T-16) is recommended for detection of LOC727838 of human origin by Western Blotting (starting dilution 1:200, dilution range 1:100-1:1000), immunoprecipitation [1-2 µg per 100-500 µg of total protein (1 ml of cell lysate)], immunofluorescence (starting dilution 1:50, dilution range 1:50-1:500) and solid phase ELISA (starting dilution 1:30, dilution range 1:30-1:3000).

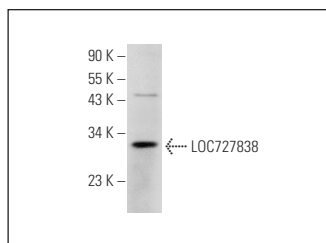
Suitable for use as control antibody for LOC727838 siRNA (h): sc-91050, LOC727838 shRNA Plasmid (h): sc-91050-SH and LOC727838 shRNA (h) Lentiviral Particles: sc-91050-V.

Positive Controls: human kidney extract: sc-363764.

RECOMMENDED SECONDARY REAGENTS

To ensure optimal results, the following support (secondary) reagents are recommended: 1) Western Blotting: use donkey anti-goat IgG-HRP: sc-2020 (dilution range: 1:2000-1:100,000) or Cruz Marker™ compatible donkey anti-goat IgG-HRP: sc-2033 (dilution range: 1:2000-1:5000), Cruz Marker™ Molecular Weight Standards: sc-2035, TBS Blotto A Blocking Reagent: sc-2333 and Western Blotting Luminol Reagent: sc-2048. 2) Immunoprecipitation: use Protein A/G PLUS-Agarose: sc-2003 (0.5 ml agarose/2.0 ml). 3) Immunofluorescence: use donkey anti-goat IgG-FITC: sc-2024 (dilution range: 1:100-1:400) or donkey anti-goat IgG-TR: sc-2783 (dilution range: 1:100-1:400) with UltraCruz™ Mounting Medium: sc-24941.

DATA



LOC727838 (T-16): sc-324067. Western blot analysis of LOC727838 expression in human kidney tissue extract.

STORAGE

Store at 4° C, ****DO NOT FREEZE****. Stable for one year from the date of shipment. Non-hazardous. No MSDS required.

RESEARCH USE

For research use only, not for use in diagnostic procedures.

PROTOCOLS

See our web site at www.scbt.com or our catalog for detailed protocols and support products.