

UGT2B36 (K-12): sc-324472

BACKGROUND

Chromosome 1 is the largest human chromosome spanning about 260 million base pairs and making up 8% of the human genome. There are about 3,000 genes on chromosome 1, and considering the great number of genes there are also a large number of diseases associated with chromosome 1. Notably, the rare aging disease Hutchinson-Gilford progeria is associated with the LMNA gene which encodes lamin A. When defective, the LMNA gene product can build up in the nucleus and cause characteristic nuclear blebs. The mechanism of rapidly enhanced aging is unclear and is a topic of continuing exploration. The MUTYH gene is located on chromosome 1 and is partially responsible for familial adenomatous polyposis. Stickler syndrome, Parkinsons, Gaucher disease and Usher syndrome are also associated with chromosome 1. A breakpoint has been identified in 1q which disrupts the DISC1 gene and is linked to schizophrenia. Aberrations in chromosome 1 are found in a variety of cancers including head and neck cancer, malignant melanoma and multiple myeloma.

REFERENCES

1. Watson, M.L., Kingsmore, S.F., Johnston, G.I., Siegelman, M.H., Le Beau, M.M., Lemons, R.S., Bora, N.S., Howard, T.A., Weissman, I.L., McEver, R.P., et al. 1990. Genomic organization of the selectin family of leukocyte adhesion molecules on human and mouse chromosome 1. *J. Exp. Med.* 172: 263-272.
2. Blackwood, D.H., Fordyce, A., Walker, M.T., St Clair, D.M., Porteous, D.J. and Muir, W.J. 2001. Schizophrenia and affective disorders—cosegregation with a translocation at chromosome 1q42 that directly disrupts brain-expressed genes: clinical and P300 findings in a family. *Am. J. Hum. Genet.* 69: 428-433.
3. Weise, A., Starke, H., Mrasek, K., Claussen, U. and Liehr, T. 2005. New insights into the evolution of chromosome 1. *Cytogenet. Genome Res.* 108: 217-222.
4. Lans, H. and Hoeijmakers, J.H. 2006. Cell biology: aging nucleus gets out of shape. *Nature* 440: 32-34.
5. Gregory, S.G., Barlow, K.F., McLay, K.E., Kaul, R., Swarbreck, D., Dunham, A., Scott, C.E., Howe, K.L., Woodfine, K.C., Spencer, C.A., Jones, M.C., Gillson, C., Searle, S., Zhou, Y., Kokocinski, F., McDonald, L., et al. 2006. The DNA sequence and biological annotation of human chromosome 1. *Nature* 441: 315-321.

CHROMOSOMAL LOCATION

Genetic locus: Ugt2b36 (mouse) mapping to 5 E1.

SOURCE

UGT2B36 (K-12) is an affinity purified goat polyclonal antibody raised against a peptide mapping within an internal region of UGT2B36 of mouse origin.

PRODUCT

Each vial contains 200 µg IgG in 1.0 ml of PBS with < 0.1% sodium azide and 0.1% gelatin.

Blocking peptide available for competition studies, sc-324472 P, (100 µg peptide in 0.5 ml PBS containing < 0.1% sodium azide and 0.2% BSA).

APPLICATIONS

UGT2B36 (K-12) is recommended for detection of UGT2B36 of mouse and rat origin by Western Blotting (starting dilution 1:200, dilution range 1:100-1:1000), immunoprecipitation [1-2 µg per 100-500 µg of total protein (1 ml of cell lysate)], immunofluorescence (starting dilution 1:50, dilution range 1:50-1:500) and solid phase ELISA (starting dilution 1:30, dilution range 1:30-1:3000); non cross-reactive with other UGT2B family members.

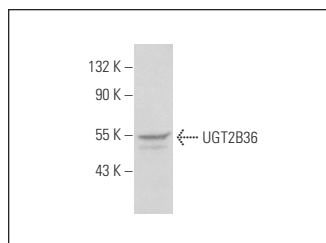
Suitable for use as control antibody for UGT2B36 siRNA (m): sc-154902, UGT2B36 shRNA Plasmid (m): sc-154902-SH and UGT2B36 shRNA (m) Lentiviral Particles: sc-154902-V.

Positive Controls: Neuro-2A whole cell lysate: sc-364185.

RECOMMENDED SECONDARY REAGENTS

To ensure optimal results, the following support (secondary) reagents are recommended: 1) Western Blotting: use donkey anti-goat IgG-HRP: sc-2020 (dilution range: 1:2000-1:100,000) or Cruz Marker™ compatible donkey anti-goat IgG-HRP: sc-2033 (dilution range: 1:2000-1:5000), Cruz Marker™ Molecular Weight Standards: sc-2035, TBS Blotto A Blocking Reagent: sc-2333 and Western Blotting Luminol Reagent: sc-2048. 2) Immunoprecipitation: use Protein A/G PLUS-Agarose: sc-2003 (0.5 ml agarose/2.0 ml). 3) Immunofluorescence: use donkey anti-goat IgG-FITC: sc-2024 (dilution range: 1:100-1:400) or donkey anti-goat IgG-TR: sc-2783 (dilution range: 1:100-1:400) with UltraCruz™ Mounting Medium: sc-24941.

DATA



UGT2B36 (K-12): sc-324472. Western blot analysis of UGT2B36 expression in Neuro-2A whole cell lysate.

STORAGE

Store at 4° C, **DO NOT FREEZE**. Stable for one year from the date of shipment. Non-hazardous. No MSDS required.

RESEARCH USE

For research use only, not for use in diagnostic procedures.

PROTOCOLS

See our web site at www.scbt.com or our catalog for detailed protocols and support products.