

BACKGROUND

Zinc-finger proteins contain DNA-binding domains and have a wide variety of functions, most of which encompass some form of transcriptional activation or repression. The majority of zinc-finger proteins contain a Krüppel-type DNA binding domain and a KRAB domain, which is thought to interact with KAP1, thereby recruiting histone modifying proteins. As a member of the Krüppel C₂H₂-type zinc-finger protein family, ZNF267 (zinc finger protein 267), also known as zinc finger protein HZF2, is a 743 amino acid nuclear protein that contains 15 C₂H₂-type zinc fingers and one KRAB domain. ZNF267 is a nuclear protein that is thought to be involved in transcriptional regulation.

REFERENCES

1. Payre, F. and Vincent, A. 1988. Finger proteins and DNA-specific recognition: distinct patterns of conserved amino acids suggest different evolutionary modes. *FEBS Lett.* 234: 245-250.
2. Thiesen, H.J. 1990. Multiple genes encoding zinc finger domains are expressed in human T cells. *New Biol.* 2: 363-374.
3. Rosenfeld, R. and Margalit, H. 1993. Zinc fingers: conserved properties that can distinguish between spurious and actual DNA-binding motifs. *J. Biomol. Struct. Dyn.* 11: 557-570.
4. Laity, J.H., Lee, B.M. and Wright, P.E. 2001. Zinc finger proteins: new insights into structural and functional diversity. *Curr. Opin. Struct. Biol.* 11: 39-46.
5. Edelstein, L.C. and Collins, T. 2005. The SCAN domain family of zinc finger transcription factors. *Gene* 359: 1-17.
6. Liu, J. and Stormo, G.D. 2008. Context-dependent DNA recognition code for C₂H₂ zinc-finger transcription factors. *Bioinformatics* 24: 1850-1857.

CHROMOSOMAL LOCATION

Genetic locus: ZNF267 (human) mapping to 16p11.2.

SOURCE

ZNF267 (Y-16) is an affinity purified goat polyclonal antibody raised against a peptide mapping within an internal region of ZNF267 of human origin.

PRODUCT

Each vial contains 200 µg IgG in 1.0 ml of PBS with < 0.1% sodium azide and 0.1% gelatin.

Blocking peptide available for competition studies, sc-324572 P, (100 µg peptide in 0.5 ml PBS containing < 0.1% sodium azide and 0.2% BSA).

STORAGE

Store at 4° C, ****DO NOT FREEZE****. Stable for one year from the date of shipment. Non-hazardous. No MSDS required.

PROTOCOLS

See our web site at www.scbt.com or our catalog for detailed protocols and support products.

APPLICATIONS

ZNF267 (Y-16) is recommended for detection of ZNF267 of human origin by Western Blotting (starting dilution 1:200, dilution range 1:100-1:1000), immunoprecipitation [1-2 µg per 100-500 µg of total protein (1 ml of cell lysate)], immunofluorescence (starting dilution 1:50, dilution range 1:50-1:500) and solid phase ELISA (starting dilution 1:30, dilution range 1:30-1:3000); non cross-reactive with other zinc finger proteins.

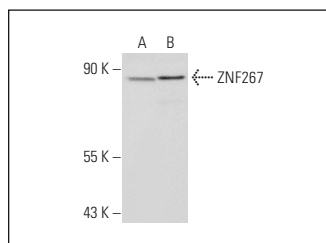
Suitable for use as control antibody for ZNF267 siRNA (h): sc-93052, ZNF267 shRNA Plasmid (h): sc-93052-SH and ZNF267 shRNA (h) Lentiviral Particles: sc-93052-V.

Molecular Weight of ZNF267: 87 kDa.

Positive Controls: HeLa whole cell lysate: sc-2200 or MCF7 whole cell lysate: sc-2206.

RECOMMENDED SECONDARY REAGENTS

To ensure optimal results, the following support (secondary) reagents are recommended: 1) Western Blotting: use donkey anti-goat IgG-HRP: sc-2020 (dilution range: 1:2000-1:100,000) or Cruz Marker™ compatible donkey anti-goat IgG-HRP: sc-2033 (dilution range: 1:2000-1:5000), Cruz Marker™ Molecular Weight Standards: sc-2035, TBS Blotto A Blocking Reagent: sc-2333 and Western Blotting Luminol Reagent: sc-2048. 2) Immunoprecipitation: use Protein A/G PLUS-Agarose: sc-2003 (0.5 ml agarose/2.0 ml). 3) Immunofluorescence: use donkey anti-goat IgG-FITC: sc-2024 (dilution range: 1:100-1:400) or donkey anti-goat IgG-TR: sc-2783 (dilution range: 1:100-1:400) with UltraCruz™ Mounting Medium: sc-24941.

DATA

ZNF267 (Y-16): sc-324572. Western blot analysis of ZNF267 expression in HeLa (A) and MCF7 (B) whole cell lysates.

RESEARCH USE

For research use only, not for use in diagnostic procedures.