

ICSBP (E-12): sc-32527

BACKGROUND

ICSBP (Interferon (IFN) consensus sequence-binding protein, Interferon Regulatory Factor 8; IRF-8) is a transcription factor that is important for IFN- γ -mediated signaling during dendritic cell and macrophage differentiation. ICSBP physically interacts with TRAF6 (between amino acid residues 356 and 305), and this interaction of ICSBP with TRAF6 modulates TLR signaling and may contribute to the cross-talk between IFN- γ and TLR signal pathways. ICSBP antagonizes Bcr/Abl by downregulation of Bcl-2. ICSBP is known to interact with chromatin, and bind PU.1 in macrophages. ICSBP belongs to the IFN regulatory factor (IRF) family that also includes IRF-1, IRF-2 and ISGF3. These proteins are composed of a conserved DNA-binding domain in the N-terminal region and a divergent C-terminal region that serves as the regulatory domain. The IRF family proteins bind to the IFN-stimulated response element (ISRE) and regulate expression of IFN- α and IFN- β .

CHROMOSOMAL LOCATION

Genetic locus: Irf8 (mouse) mapping to 8 E1.

SOURCE

ICSBP (E-12) is an affinity purified goat polyclonal antibody raised against a peptide mapping within an internal region of ICSBP of mouse origin.

PRODUCT

Each vial contains 200 μ g IgG in 1.0 ml of PBS with < 0.1% sodium azide and 0.1% gelatin.

Blocking peptide available for competition studies, sc-32527 P, (100 μ g peptide in 0.5 ml PBS containing < 0.1% sodium azide and 0.2% BSA).

Available as TransCruz reagent for Gel Supershift and ChIP applications, sc-32527 X, 200 μ g/0.1 ml.

RESEARCH USE

For research use only, not for use in diagnostic procedures.

APPLICATIONS

ICSBP (E-12) is recommended for detection of ICSBP of mouse and rat origin by Western Blotting (starting dilution 1:200, dilution range 1:100-1:1000), immunoprecipitation [1-2 μ g per 100-500 μ g of total protein (1 ml of cell lysate)], immunofluorescence (starting dilution 1:50, dilution range 1:50-1:500) and solid phase ELISA (starting dilution 1:30, dilution range 1:30-1:3000). ICSBP (E-12) is also recommended for detection of ICSBP in additional species, including equine.

Suitable for use as control antibody for ICSBP siRNA (m): sc-35631, ICSBP shRNA Plasmid (m): sc-35631-SH and ICSBP shRNA (m) Lentiviral Particles: sc-35631-V.

ICSBP (E-12) X TransCruz antibody is recommended for Gel Supershift and ChIP applications.

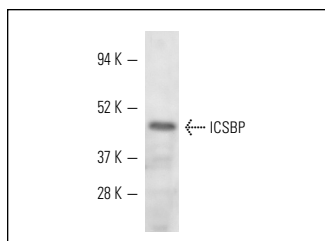
Molecular Weight of ICSBP: 48 kDa.

Positive Controls: RAW 264.7 whole cell lysate: sc-2211, mouse spleen extract: sc-2391 or RAW 264.7 + IFN- α cell lysate: sc-24765.

RECOMMENDED SECONDARY REAGENTS

To ensure optimal results, the following support (secondary) reagents are recommended: 1) Western Blotting: use donkey anti-goat IgG-HRP: sc-2020 (dilution range: 1:2000-1:100,000) or Cruz Marker™ compatible donkey anti-goat IgG-HRP: sc-2033 (dilution range: 1:2000-1:5000), Cruz Marker™ Molecular Weight Standards: sc-2035, TBS Blotto A Blocking Reagent: sc-2333 and Western Blotting Luminol Reagent: sc-2048. 2) Immunoprecipitation: use Protein A/G PLUS-Agarose: sc-2003 (0.5 ml agarose/2.0 ml). 3) Immunofluorescence: use donkey anti-goat IgG-FITC: sc-2024 (dilution range: 1:100-1:400) or donkey anti-goat IgG-TR: sc-2783 (dilution range: 1:100-1:400) with UltraCruz™ Mounting Medium: sc-24941.

DATA



ICSBP (E-12): sc-32527. Western blot analysis of ICSBP expression in mouse spleen tissue extract.

STORAGE

Store at 4° C, ****DO NOT FREEZE****. Stable for one year from the date of shipment. Non-hazardous. No MSDS required.

PROTOCOLS

See our web site at www.scbt.com or our catalog for detailed protocols and support products.



Try **ICSBP (E-9): sc-365042** or **ICSBP (F-9): sc-365041**, our highly recommended monoclonal alternatives to ICSBP (E-12).