

Notch 4 (E-11): sc-32634

BACKGROUND

The LIN-12/Notch family of transmembrane receptors is believed to play a central role in development by regulating cell fate decisions. To date, four Notch homologs have been identified in mammals and have been designated Notch 1, Notch 2, Notch 3 and Notch 4. The Notch genes are expressed in a variety of tissues in both the embryonic and adult organism, suggesting that the genes are involved in multiple signaling pathways. The Notch proteins have been found to be overexpressed or rearranged in human tumors. Ligands for Notch include Jagged, Jagged2 and Delta. Jagged can activate Notch and prevent myoblast differentiation by inhibiting the expression of muscle regulatory and structural genes. Jagged2 is thought to be involved in the development of various tissues whose development is dependent upon epithelial-mesenchymal interactions. Normal Delta expression is restricted to the adrenal gland and placenta. Delta expression has also been found in neuroendocrine tumors such as neuroblastomas and pheochromocytomas.

REFERENCES

- Weinmaster, G., et al. 1992. Notch 2: a second mammalian Notch gene. *Development* 116: 931-941.
- Kopan, R., et al. 1993. Mouse Notch: expression in hair follicles correlates with cell fate determination. *J. Cell Biol.* 121: 631-641.
- Laborda, J., et al. 1993. dlk, a putative mammalian homeotic gene differentially expressed in small cell lung carcinomas and neuroendocrine tumor cell line. *J. Biol. Chem.* 268: 3817-3820.
- Swiatek, P.J., et al. 1994. Notch 1 is essential for postimplantation development in mice. *Genes Dev.* 8: 707-719.

CHROMOSOMAL LOCATION

Genetic locus: NOTCH4 (human) mapping to 6p21.32; notch4 (mouse) mapping to 17 B1.

SOURCE

Notch 4 (E-11) is an affinity purified goat polyclonal antibody raised against a peptide mapping within an N-terminal extracellular domain of Notch 4 of mouse origin.

PRODUCT

Each vial contains 200 µg IgG in 1.0 ml of PBS with < 0.1% sodium azide and 0.1% gelatin.

Blocking peptide available for competition studies, sc-32634 P, (100 µg peptide in 0.5 ml PBS containing < 0.1% sodium azide and 0.2% BSA).

STORAGE

Store at 4° C, **DO NOT FREEZE**. Stable for one year from the date of shipment. Non-hazardous. No MSDS required.

RESEARCH USE

For research use only, not for use in diagnostic procedures.

APPLICATIONS

Notch 4 (E-11) is recommended for detection of Notch 4 of mouse, rat and human origin by Western Blotting (starting dilution 1:200, dilution range 1:100-1:1000), immunoprecipitation [1-2 µg per 100-500 µg of total protein (1 ml of cell lysate)], immunofluorescence (starting dilution 1:50, dilution range 1:50-1:500) and solid phase ELISA (starting dilution 1:30, dilution range 1:30-1:3000).

Suitable for use as control antibody for Notch 4 siRNA (h): sc-40137, Notch 4 siRNA (m): sc-40138, Notch 4 shRNA Plasmid (h): sc-40137-SH, Notch 4 shRNA Plasmid (m): sc-40138-SH, Notch 4 shRNA (h) Lentiviral Particles: sc-40137-V and Notch 4 shRNA (m) Lentiviral Particles: sc-40138-V.

Molecular Weight of Notch 4 predicted isoforms: 210/61/40 kDa.

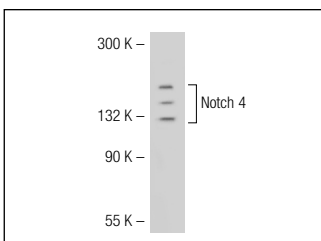
Molecular Weight of Notch 4 observed isoforms: 117-218 kDa.

Positive Controls: JAR cell lysate: sc-2276, mouse kidney extract: sc-2255 or Jurkat whole cell lysate: sc-2204.

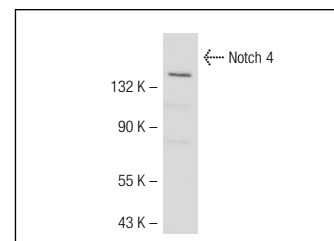
RECOMMENDED SECONDARY REAGENTS

To ensure optimal results, the following support (secondary) reagents are recommended: 1) Western Blotting: use donkey anti-goat IgG-HRP: sc-2020 (dilution range: 1:2000-1:100,000) or Cruz Marker™ compatible donkey anti-goat IgG-HRP: sc-2033 (dilution range: 1:2000-1:5000), Cruz Marker™ Molecular Weight Standards: sc-2035, TBS Blotto A Blocking Reagent: sc-2333 and Western Blotting Luminol Reagent: sc-2048. 2) Immunoprecipitation: use Protein A/G PLUS-Agarose: sc-2003 (0.5 ml agarose/2.0 ml). 3) Immunofluorescence: use donkey anti-goat IgG-FITC: sc-2024 (dilution range: 1:100-1:400) or donkey anti-goat IgG-TR: sc-2783 (dilution range: 1:100-1:400) with UltraCruz™ Mounting Medium: sc-24941.

DATA



Notch 4 (E-11): sc-32634. Western blot analysis of Notch 4 expression in 293T whole cell lysate.



Notch 4 (E-11): sc-32634. Western blot analysis of Notch 4 expression in JAR whole cell lysate.

SELECT PRODUCT CITATIONS

- Nichol, D., et al. 2010. Impaired angiogenesis and altered Notch signaling in mice overexpressing endothelial Eglf7. *Blood* 116: 6133-6143.

MONOS
Satisfaction
Guaranteed

Try **Notch 4 (E-11)** or **Notch 4 (C-3): sc-377399**, our highly recommended monoclonal alternatives to Notch 4 (E-11). Also, for AC, HRP, FITC, PE, Alexa Fluor® 488 and Alexa Fluor® 647 conjugates, see **Notch 4 (E-11)**.