

CD4 (B486A1): sc-32811

BACKGROUND

The T cell receptor (TCR) is a heterodimer composed of either α and β or γ and δ chains. CD3 chains and the CD4 or CD8 co-receptors are also required for efficient signal transduction through the TCR. The TCR is expressed on T helper and T cytotoxic cells that can be distinguished by their expression of CD4 and CD8; T helper cells express CD4 proteins and T cytotoxic cells display CD8. CD4 is also expressed on cortical cells, mature medullary thymocytes, microglial cells and dendritic cells. CD4 (also designated T4 and Leu 3), is a membrane glycoprotein that contains four extracellular immunoglobulin-like domains. The TCR in association with CD4 can bind class II MHC molecules presented by the antigen-presenting cells. The CD4 protein functions by increasing the avidity of the interaction between the TCR and an antigen-class II MHC complex. An additional role of CD4 is to function as a receptor for HIV.

REFERENCES

1. Maddon, P.J., et al. 1987. Structure and expression of human and mouse T4 genes. *Proc. Natl. Acad. Sci. USA* 84: 9155-9159.
2. Arthos, J., et al. 1989. Identification of the residues in human CD4 critical for the binding of HIV. *Cell* 57: 469-481.
3. Healey, D., et al. 1990. Novel anti-CD4 monoclonal antibodies separate human immunodeficiency virus infection and fusion of CD4⁺ cells from virus binding. *J. Exp. Med.* 172: 1233-1242.
4. Allison, J.P. and Havran, W.L. 1991. The immunobiology of T cells with invariant $\gamma\delta$ antigen receptors. *Annu. Rev. Immunol.* 9: 679-705.
5. Janeway, C.A., Jr. 1992. The T cell receptor as a multicomponent signalling machine: CD4/CD8 coreceptors and CD45 in T cell activation. *Annu. Rev. Immunol.* 10: 645-674.
6. Ehrlich, E.W., et al. 1993. T cell receptor interaction with peptide/major histocompatibility complex (MHC) and superantigen/MHC ligands is dominated by antigen. *J. Exp. Med.* 178: 713-722.

CHROMOSOMAL LOCATION

Genetic locus: CD4 (human) mapping to 12p13.31.

SOURCE

CD4 (B486A1) is a mouse monoclonal antibody raised against recombinant CD4 of human origin.

PRODUCT

Each vial contains 200 μ g IgG₁ kappa light chain in 1.0 ml of PBS with < 0.1% sodium azide and 0.1% gelatin.

CD4 (B486A1) is available conjugated to either phycoerythrin (sc-32811 PE) or fluorescein (sc-32811 FITC), 200 μ g/ml, for IF, IHC(P) and FCM.

STORAGE

Store at 4° C, **DO NOT FREEZE**. Stable for one year from the date of shipment. Non-hazardous. No MSDS required.

APPLICATIONS

CD4 (B486A1) is recommended for detection of CD4 of human origin by Western Blotting (starting dilution 1:200, dilution range 1:100-1:1000), immunofluorescence (starting dilution 1:50, dilution range 1:50-1:500) and flow cytometry (1 μ g per 1 x 10⁶ cells).

Suitable for use as control antibody for CD4 siRNA (h): sc-29246, CD4 shRNA Plasmid (h): sc-29246-SH and CD4 shRNA (h) Lentiviral Particles: sc-29246-V.

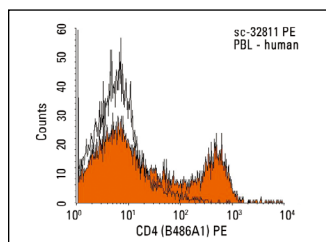
Molecular Weight of CD4: 54 kDa.

Positive Controls: SUP-T1 whole cell lysate: sc-364796, CCRF-CEM cell lysate: sc-2225 or HL-60 whole cell lysate: sc-2209.

RECOMMENDED SUPPORT REAGENTS

To ensure optimal results, the following support reagents are recommended: 1) Western Blotting: use m-IgG κ BP-HRP: sc-516102 or m-IgG κ BP-HRP (Cruz Marker): sc-516102-CM (dilution range: 1:1000-1:10000), Cruz Marker™ Molecular Weight Standards: sc-2035, UltraCruz® Blocking Reagent: sc-516214 and Western Blotting Luminol Reagent: sc-2048. 2) Immunofluorescence: use m-IgG κ BP-FITC: sc-516140 or m-IgG κ BP-PE: sc-516141 (dilution range: 1:50-1:200) with UltraCruz® Mounting Medium: sc-24941 or UltraCruz® Hard-set Mounting Medium: sc-359850.

DATA



CD4 (B486A1) PE: sc-32811 PE. FCM analysis of human peripheral blood leukocytes. Black line histogram represents the isotype control, normal mouse IgG₁-PE: sc-2866.

RESEARCH USE

For research use only, not for use in diagnostic procedures.

PROTOCOLS

See our web site at www.scbt.com for detailed protocols and support products.



See **CD4 (MT310): sc-19641** for CD4 antibody conjugates, including AC, HRP, FITC, PE, and Alexa Fluor® 488, 546, 594, 647, 680 and 790.