

PLTP (H-273): sc-32901

BACKGROUND

Phospholipid transfer protein (PLTP) is involved in reverse cholesterol transport, a key means of removal of excess cholesterol from cellular membranes for transport to the liver and subsequent secretion into the bile. PLTP remodels HDL by promoting net transfer and exchange of phospholipids among HDL subclasses and other lipoproteins. PLTP is secreted and distributed widely in various tissues including placenta, kidney, liver and brain. At least two transcript variants encoding different isoforms have been found for this gene. Protein secretion of active PLTP is observable in neurons, microglia, and astrocytes in culture. PLTP is present in neurons, astrocytes, microglia, and oligodendroglia.

CHROMOSOMAL LOCATION

Genetic locus: PLTP (human) mapping to 20q13.12; Pltp (mouse) mapping to 2 H3.

SOURCE

PLTP (H-273) is a rabbit polyclonal antibody raised against amino acids 221-493 mapping at the C-terminus of PLTP of human origin.

PRODUCT

Each vial contains 200 µg IgG in 1.0 ml of PBS with < 0.1% sodium azide and 0.1% gelatin.

STORAGE

Store at 4° C, ****DO NOT FREEZE****. Stable for one year from the date of shipment. Non-hazardous. No MSDS required.

APPLICATIONS

PLTP (H-273) is recommended for detection of precursor and mature forms of isoforms 1 and 2 of PLTP of mouse, rat and human origin by Western Blotting (starting dilution 1:200, dilution range 1:100-1:1000), immunoprecipitation [1-2 µg per 100-500 µg of total protein (1 ml of cell lysate)], immunofluorescence (starting dilution 1:50, dilution range 1:50-1:500), immunohistochemistry (including paraffin-embedded sections) (starting dilution 1:50, dilution range 1:50-1:500) and solid phase ELISA (starting dilution 1:30, dilution range 1:30-1:3000).

PLTP (H-273) is also recommended for detection of precursor and mature forms of isoforms 1 and 2 of PLTP in additional species, including canine, bovine and porcine.

Suitable for use as control antibody for PLTP siRNA (h): sc-106813, PLTP siRNA (m): sc-152342, PLTP shRNA Plasmid (h): sc-106813-SH, PLTP shRNA Plasmid (m): sc-152342-SH, PLTP shRNA (h) Lentiviral Particles: sc-106813-V and PLTP shRNA (m) Lentiviral Particles: sc-152342-V.

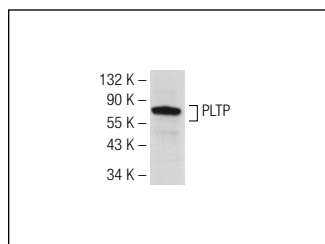
Molecular Weight of PLTP: 80 kDa.

Positive Controls: HeLa nuclear extract: sc-2120, mouse liver extract: sc-2256 or rat liver extract: sc-2395.

RECOMMENDED SECONDARY REAGENTS

To ensure optimal results, the following support (secondary) reagents are recommended: 1) Western Blotting: use goat anti-rabbit IgG-HRP: sc-2004 (dilution range: 1:2000-1:100,000) or Cruz Marker™ compatible goat anti-rabbit IgG-HRP: sc-2030 (dilution range: 1:2000-1:5000), Cruz Marker™ Molecular Weight Standards: sc-2035, TBS Blotto A Blocking Reagent: sc-2333 and Western Blotting Luminol Reagent: sc-2048. 2) Immunoprecipitation: use Protein A/G PLUS-Agarose: sc-2003 (0.5 ml agarose/2.0 ml). 3) Immunofluorescence: use goat anti-rabbit IgG-FITC: sc-2012 (dilution range: 1:100-1:400) or goat anti-rabbit IgG-TR: sc-2780 (dilution range: 1:100-1:400) with UltraCruz™ Mounting Medium: sc-24941. 4) Immunohistochemistry: use ImmunoCruz™: sc-2051 or ABC: sc-2018 rabbit IgG Staining Systems.

DATA



PLTP (H-273): sc-32901. Western blot analysis of PLTP expression in mouse liver tissue extract.



PLTP (H-273): sc-32901. Immunoperoxidase staining of formalin fixed, paraffin-embedded human gall bladder tissue showing cytoplasmic and membrane staining of glandular cells.

RESEARCH USE

For research use only, not for use in diagnostic procedures.

PROTOCOLS

See our web site at www.scbt.com or our catalog for detailed protocols and support products.

MONOS
Satisfaction
Guaranteed

Try **PLTP (A-12): sc-271596**, our highly recommended monoclonal alternative to PLTP (H-273).