

p-NFATc2 (Ser 213/217/221): sc-32991

BACKGROUND

The NFAT (nuclear factor of activated T cells) family of transcription factors regulates cytokine expression in T cells. Members of the family include NFATc1 (NFATc), NFATc2 (NFATp), NFATn, NFATc3 (NFAT4, NFATx) and NFATc4 (NFAT3). Recognition of antigen by the T cell receptor (TCR) eventually activates the calcium-dependent protein phosphatase calcineurin. Once activated, calcineurin stimulates the translocation of NFATc1 (cytoplasmic) from the NFATc1, NFATc2 resides in the cytoplasm and translocates to the nucleus subsequent to activation of calcineurin. Once in the nucleus, NFATc2 synergizes with AP-1 transcription factors to initiate transcription of cytokine genes. NFATc3 and NFATc4 share 65% sequence identity with other members of the NFAT family. They are similar to NFATc2 in that they also synergize with the AP-1 family of proteins. NFATc2 is phosphorylated by NFATc-kinase and is inducibly expressed in T lymphocytes after TCR complex activation. The phosphorylated form of NFATc2 localizes to the cytoplasm. It is dephosphorylated by calcineurin and localizes to the nucleus after dephosphorylation.

CHROMOSOMAL LOCATION

Genetic locus: NFATC2 (human) mapping to 20q13.2; Nfatc2 (mouse) mapping to 2 H3.

SOURCE

p-NFATc2 (Ser 213/217/221) is a rabbit polyclonal antibody raised against a short amino acid sequence containing Ser 213, Ser 217 and Ser 221 phosphorylated NFATc2 of human origin.

PRODUCT

Each vial contains 200 µg IgG in 1.0 ml of PBS with < 0.1% sodium azide and 0.1% gelatin.

Blocking peptide available for competition studies, sc-32991 P, (100 µg peptide in 0.5 ml PBS containing < 0.1% sodium azide and 0.2% BSA).

APPLICATIONS

p-NFATc2 (Ser 213/217/221) is recommended for detection of Ser 213, Ser 217 and Ser 221 triply phosphorylated NFATc2 SP-2 domain of mouse, rat and human origin by Western Blotting (starting dilution 1:200, dilution range 1:100-1:1000), immunoprecipitation [1-2 µg per 100-500 µg of total protein (1 ml of cell lysate)], immunofluorescence (starting dilution 1:50, dilution range 1:50-1:500), immunohistochemistry (including paraffin-embedded sections) (starting dilution 1:50, dilution range 1:50-1:500) and solid phase ELISA (starting dilution 1:30, dilution range 1:30-1:3000).

p-NFATc2 (Ser 213/217/221) is also recommended for detection of correspondingly phosphorylated NFATc2 in additional species, including equine, canine, bovine, porcine and avian.

Suitable for use as control antibody for NFATc2 siRNA (h): sc-36055, NFATc2 siRNA (m): sc-36056, NFATc2 shRNA Plasmid (h): sc-36055-SH, NFATc2 shRNA Plasmid (m): sc-36056-SH, NFATc2 shRNA (h) Lentiviral Particles: sc-36055-V and NFATc2 shRNA (m) Lentiviral Particles: sc-36056-V.

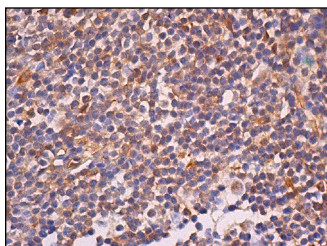
Molecular Weight of p-NFATc2: 135 kDa.

Positive Controls: Ramos cell lysate: sc-2216 or Ramos cell lysate: sc-2216.

RECOMMENDED SECONDARY REAGENTS

To ensure optimal results, the following support (secondary) reagents are recommended: 1) Western blotting: use goat anti-rabbit IgG-HRP: sc-2004 (dilution range: 1:2000-1:100,000) or Cruz Marker™ compatible goat anti-rabbit IgG-HRP: sc-2030 (dilution range: 1:2000-1:5000), Cruz Marker™ Molecular Weight Standards: sc-2035, TBS Blotto B Blocking Reagent: sc-2335 (use 50 mM NaF, sc-24988, as diluent), Western Blotting Luminol Reagent: sc-2048 and Lambda Phosphatase: sc-200312A. 2) Immunoprecipitation: use Protein A/G PLUS-Agarose: sc-2003 (0.5 ml agarose/2.0 ml). 3) Immunofluorescence: use goat anti-rabbit IgG-FITC: sc-2012 (dilution range: 1:100-1:400) or goat anti-rabbit IgG-TR: sc-2780 (dilution range: 1:100-1:400) with UltraCruz™ Mounting Medium: sc-24941. 4) Immunohistochemistry: use ImmunoCruz™: sc-2051 or ABC: sc-2018 rabbit IgG Staining Systems.

DATA



p-NFATc2 (Ser 213/217/221): sc-32991. Immunoperoxidase staining of formalin fixed, paraffin-embedded human lymph node tissue showing cytoplasmic staining of cells in non-germinal center.

SELECT PRODUCT CITATIONS

1. Karatas, A., et al. 2008. Deoxycorticosterone acetate-salt mice exhibit blood pressure-independent sexual dimorphism. *Hypertension* 51: 1177-1183.

STORAGE

Store at 4° C, **DO NOT FREEZE**. Stable for one year from the date of shipment. Non-hazardous. No MSDS required.

RESEARCH USE

For research use only, not for use in diagnostic procedures.

PROTOCOLS

See our web site at www.scbt.com or our catalog for detailed protocols and support products.