

LSP1 (H-300): sc-33160

BACKGROUND

pp52 (human) or LSP1 (murine) is a hematopoietic-expressed gene that encodes an F-actin-binding, leukocyte-specific (including B and T lymphocytes, granulocytes and macrophages), phosphoprotein. However, mRNA splice variants that do not encode the lympho-specific protein are expressed from this gene in nonlymphoid cell lines (myocytes, stromal cells and fibro-blasts) as well, suggesting that pp52 has a divergent role in signal transduction. The pp52 (LSP1) locus maps to human chromosome 11p15.5, which is implicated in tumor-related chromosomal translocations found in chronic lymphocytic leukemia. The pp52 promoter contains key elements that control transcriptional activity including an initiator specifying the unique 5' terminus of pp52 mRNA, tandem pairs of Ets and SP1 motifs, and a single C/EBP motif. LSP1 binds the cytoskeleton and has been implicated in affecting cytoskeletal remodeling in a variety of leukocyte functions, including cell motility and chemotaxis.

REFERENCES

- Gimble, J.M., Dorheim, M.A., Youkhana, K., Hudson, J., Nead, M., Gilly, M., Wood, W.J., Jr., Hermanson, G.G., Kuehl, M. and Wall, R. 1993. Alternatively spliced pp52 mRNA in nonlymphoid stromal cells. *J. Immunol.* 150: 115-121.
- May, W., Korenberg, J.R., Chen, X.N., Lunsford, L., Wood, W.J., Thompson, A., Wall, R. and Denny, C.T. 1993. Human lymphocyte-specific pp52 gene is a member of a highly conserved dispersed family. *Genomics* 15: 515-520.
- Omori, S.A., Smale, S., O'Shea-Greenfield, A. and Wall, R. 1997. Differential interaction of nuclear factors with the leukocyte-specific pp52 promoter in B and T cells. *J. Immunol.* 159: 1800-1808.
- Miyoshi, E.K., Stewart, P.L., Kincade, P.W., Lee, M.B., Thompson, A.A. and Wall, R. 2001. Aberrant expression and localization of the cytoskeleton-binding pp52 (LSP1) protein in hairy cell leukemia. *Leuk. Res.* 25: 57-67.
- Malone, C.S., Omori, S.A., Gangadharan, D. and Wall, R. 2001. Leukocyte-specific expression of the pp52 (LSP1) promoter is controlled by the *cis*-acting pp52 silencer and anti-silencer elements. *Gene* 268: 9-16.

CHROMOSOMAL LOCATION

Genetic locus: LSP1 (human) mapping to 11p15.5; Lsp1 (mouse) mapping to 7 F5.

SOURCE

LSP1 (H-300) is a rabbit polyclonal antibody raised against amino acids 40-339 mapping at the C-terminus of LSP1 of human origin.

PRODUCT

Each vial contains 200 µg IgG in 1.0 ml of PBS with < 0.1% sodium azide and 0.1% gelatin.

STORAGE

Store at 4° C, ****DO NOT FREEZE****. Stable for one year from the date of shipment. Non-hazardous. No MSDS required.

APPLICATIONS

LSP1 (H-300) is recommended for detection of LSP1 of mouse, rat and human origin by Western Blotting (starting dilution 1:200, dilution range 1:100-1:1000), immunoprecipitation [1-2 µg per 100-500 µg of total protein (1 ml of cell lysate)], immunofluorescence (starting dilution 1:50, dilution range 1:50-1:500) and solid phase ELISA (starting dilution 1:30, dilution range 1:30-1:3000).

Suitable for use as control antibody for LSP1 siRNA (h): sc-42899, LSP1 siRNA (m): sc-42900, LSP1 shRNA Plasmid (h): sc-42899-SH, LSP1 shRNA Plasmid (m): sc-42900-SH, LSP1 shRNA (h) Lentiviral Particles: sc-42899-V and LSP1 shRNA (m) Lentiviral Particles: sc-42900-V.

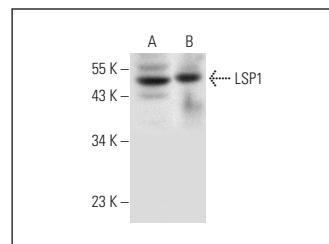
Molecular Weight of LSP1: 52 kDa.

Positive Controls: MOLT-4 cell lysate: sc-2233, Ramos cell lysate: sc-2216 or Raji whole cell lysate: sc-364236.

RECOMMENDED SECONDARY REAGENTS

To ensure optimal results, the following support (secondary) reagents are recommended: 1) Western Blotting: use goat anti-rabbit IgG-HRP: sc-2004 (dilution range: 1:2000-1:100,000) or Cruz Marker™ compatible goat anti-rabbit IgG-HRP: sc-2030 (dilution range: 1:2000-1:5000), Cruz Marker™ Molecular Weight Standards: sc-2035, TBS Blotto A Blocking Reagent: sc-2333 and Western Blotting Luminol Reagent: sc-2048. 2) Immunoprecipitation: use Protein A/G PLUS-Agarose: sc-2003 (0.5 ml agarose/2.0 ml). 3) Immunofluorescence: use goat anti-rabbit IgG-FITC: sc-2012 (dilution range: 1:100-1:400) or goat anti-rabbit IgG-TR: sc-2780 (dilution range: 1:100-1:400) with UltraCruz™ Mounting Medium: sc-24941.

DATA



LSP1 (H-300): sc-33160. Western blot analysis of LSP1 expression in Raji (A) and Ramos (B) whole cell lysates.

RESEARCH USE

For research use only, not for use in diagnostic procedures.



Try **LSP1 (TDP153): sc-53363** or **LSP1 (B-6): sc-271137**, our highly recommended monoclonal alternatives to LSP1 (H-300).