

TSLC1 (H-300): sc-33198



The Power to Question

BACKGROUND

Homologous to the poliovirus receptor (PVR/CD155), the Nectin immunoglobulin superfamily comprises four known isoforms, Nectin 1, 2, 3 and 4 (also designated TSLC1). TSLC1 is encoded by a tumor-suppressor gene in human non-small-cell lung cancer mapping to chromosome 11q23.3. The TSLC1 protein is an N-linked membrane glycoprotein that co-localizes with the Actin filament-binding protein, afadin, at cadherin-based adherens junctions in MDCKII epithelial cells. TSLC1 also interacts with the tumor-suppressor gene product DAL-1 (for differentially expressed in adenocarcinoma of the lung protein 1) to target Actin rearrangement and cellular motility. TSLC1 may also form homodimers that function in homophilic, intracellular adhesion. TSLC1 expression is reduced or absent in a number of characterized cancer cell lines including A549. In prostate and breast cancer, as well as in pancreatic ductal adenocarcinoma, the TSLC1 promoter is commonly silenced by hypermethylation. Unlike other Nectins, which are more widely expressed, TSLC1 is mainly expressed in the placenta.

CHROMOSOMAL LOCATION

Genetic locus: CADM1 (human) mapping to 11q23.3; Cadm1 (mouse) mapping to 9 A5.3.

SOURCE

TSLC1 (H-300) is a rabbit polyclonal antibody raised against amino acids 1-300 mapping at the N-terminus of TSLC1 of human origin.

PRODUCT

Each vial contains 200 µg IgG in 1.0 ml of PBS with < 0.1% sodium azide and 0.1% gelatin.

STORAGE

Store at 4° C, ****DO NOT FREEZE****. Stable for one year from the date of shipment. Non-hazardous. No MSDS required.

APPLICATIONS

TSLC1 (H-300) is recommended for detection of TSLC1 of mouse, rat and human origin by Western Blotting (starting dilution 1:200, dilution range 1:100-1:1000), immunoprecipitation [1-2 µg per 100-500 µg of total protein (1 ml of cell lysate)], immunofluorescence (starting dilution 1:50, dilution range 1:50-1:500) and solid phase ELISA (starting dilution 1:30, dilution range 1:30-1:3000).

TSLC1 (H-300) is also recommended for detection of TSLC1 (tumor suppressor in lung cancer 1, also designated Nectin 4) in additional species, including equine, canine and bovine.

Suitable for use as control antibody for TSLC1 siRNA (h): sc-37518, TSLC1 siRNA (m): sc-37519, TSLC1 shRNA Plasmid (h): sc-37518-SH, TSLC1 shRNA Plasmid (m): sc-37519-SH, TSLC1 shRNA (h) Lentiviral Particles: sc-37518-V and TSLC1 shRNA (m) Lentiviral Particles: sc-37519-V.

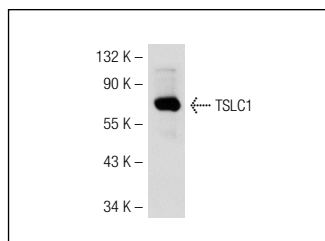
Molecular Weight of TSLC1: 75 kDa.

Positive Controls: rat lung extract: sc-2396, mouse lung extract: sc-2390 or mouse placenta extract: sc-364247.

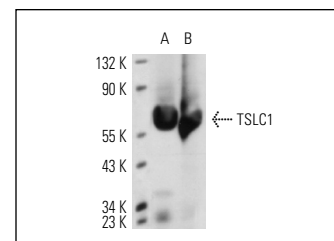
RECOMMENDED SECONDARY REAGENTS

To ensure optimal results, the following support (secondary) reagents are recommended: 1) Western Blotting: use goat anti-rabbit IgG-HRP: sc-2004 (dilution range: 1:2000-1:100,000) or Cruz Marker™ compatible goat anti-rabbit IgG-HRP: sc-2030 (dilution range: 1:2000-1:5000), Cruz Marker™ Molecular Weight Standards: sc-2035, TBS Blotto A Blocking Reagent: sc-2333 and Western Blotting Luminol Reagent: sc-2048. 2) Immunoprecipitation: use Protein A/G PLUS-Agarose: sc-2003 (0.5 ml agarose/2.0 ml). 3) Immunofluorescence: use goat anti-rabbit IgG-FITC: sc-2012 (dilution range: 1:100-1:400) or goat anti-rabbit IgG-TR: sc-2780 (dilution range: 1:100-1:400) with UltraCruz™ Mounting Medium: sc-24941.

DATA



TSLC1 (H-300): sc-33198. Western blot analysis of TSLC1 expression in mouse placenta tissue extract.



TSLC1 (H-300): sc-33198. Western blot analysis of TSLC1 expression in rat lung (A) and mouse lung (B) tissue extracts.

SELECT PRODUCT CITATIONS

- Chen, K., et al. 2011. CADM1/TSLC1 inactivation by promoter hypermethylation is a frequent event in colorectal carcinogenesis and correlates with late stages of the disease. *Int. J. Cancer* 128: 266-273.
- Mentink, A., et al. 2013. Predicting the therapeutic efficacy of MSC in bone tissue engineering using the molecular marker CADM1. *Biomaterials* 34: 4592-4601.

RESEARCH USE

For research use only, not for use in diagnostic procedures.

PROTOCOLS

See our web site at www.scbt.com or our catalog for detailed protocols and support products.

MONOS
Satisfaction
Guaranteed

Try **TSLC1 (1B5): sc-293495**, our highly recommended monoclonal alternative to TSLC1 (H-300).