

## HCC-4 (L-15): sc-33230

### BACKGROUND

The human  $\beta$  cytokine HCC-4 (also designated small inducible cytokine A16, IL-10 inducible chemokine, Chemokine CC-4, NCC-4, liver expressed chemokine, LEC, LMC, Monotactin-1, MTN-1, lymphocyte and monocyte chemoattractant, or LCC-1) displays chemotactic activity for monocytes and dendritic cells. HCC-4 maps to chromosome 17q11.2 where three other CC chemokines, MIPF-1, HCC-2, and HCC-1 are clustered within a region which is 40 kb long. HCC-4 expression is uniquely upregulated by IL-10 and demonstrates chemotactic activity for monocytes. The ability of HCC-4 to markedly improve recognition of poorly immunogenic cells suggests that it could be an effective component of antitumor vaccines.

### REFERENCES

- Hedrick, J.A., et al. 1998. Characterization of a novel C-C chemokine, HCC-4, whose expression is increased by interleukin-10. *Blood* 91: 4242-4247.
- Shoudai, K., et al. 1998. Isolation of cDNA encoding a novel human C-C chemokine NCC-4/LEC. *Biochim. Biophys. Acta* 1396: 273-277.
- Youn, B.S., et al. 1998. Isolation and characterization of LMC, a novel lymphocyte and monocyte chemoattractant human C-C chemokine, with myelosuppressive activity. *Biochem. Biophys. Res. Commun.* 247: 217-222.
- Nomiyama, H., et al. 1999. Organization of the chemokine gene cluster on human chromosome 17q11.2 containing the genes for C-C chemokine MIPF-1, HCC-2, HCC-1, LEC, and RANTES. *J. Interferon Cytokine Res.* 19: 227-234.
- Giovarelli, M., et al. 2000. Tumor rejection and immune memory elicited by locally released LEC chemokine are associated with an impressive recruitment of APCs, lymphocytes, and granulocytes. *J. Immunol.* 164: 3200-3206.

### CHROMOSOMAL LOCATION

Genetic locus: CCL16 (human) mapping to 17q12.

### SOURCE

HCC-4 (L-15) is an affinity purified goat polyclonal antibody raised against a peptide mapping within an internal region of HCC-4 of human origin.

### PRODUCT

Each vial contains 200  $\mu$ g IgG in 1.0 ml of PBS with < 0.1% sodium azide and 0.1% gelatin.

Blocking peptide available for competition studies, sc-33230 P, (100  $\mu$ g peptide in 0.5 ml PBS containing < 0.1% sodium azide and 0.2% BSA).

### STORAGE

Store at 4° C, **\*\*DO NOT FREEZE\*\***. Stable for one year from the date of shipment. Non-hazardous. No MSDS required.

### RESEARCH USE

For research use only, not for use in diagnostic procedures.

### APPLICATIONS

HCC-4 (L-15) is recommended for detection of HCC-4 of human origin by Western Blotting (starting dilution 1:200, dilution range 1:100-1:1000), immunoprecipitation [1-2  $\mu$ g per 100-500  $\mu$ g of total protein (1 ml of cell lysate)], immunofluorescence (starting dilution 1:50, dilution range 1:50-1:500) and solid phase ELISA (starting dilution 1:30, dilution range 1:30-1:3000).

HCC-4 (L-15) is also recommended for detection of HCC-4 in additional species, including porcine.

Suitable for use as control antibody for HCC-4 siRNA (h): sc-39353, HCC-4 shRNA Plasmid (h): sc-39353-SH and HCC-4 shRNA (h) Lentiviral Particles: sc-39353-V.

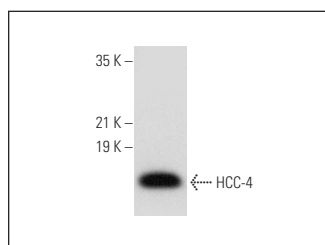
Molecular Weight of CCL16: 14 kDa.

Positive Controls: human liver extract: sc-363766.

### RECOMMENDED SECONDARY REAGENTS

To ensure optimal results, the following support (secondary) reagents are recommended: 1) Western Blotting: use donkey anti-goat IgG-HRP: sc-2020 (dilution range: 1:2000-1:100,000) or Cruz Marker™ compatible donkey anti-goat IgG-HRP: sc-2033 (dilution range: 1:2000-1:5000), Cruz Marker™ Molecular Weight Standards: sc-2035, TBS Blotto A Blocking Reagent: sc-2333 and Western Blotting Luminol Reagent: sc-2048. 2) Immunoprecipitation: use Protein A/G PLUS-Agarose: sc-2003 (0.5 ml agarose/2.0 ml). 3) Immunofluorescence: use donkey anti-goat IgG-FITC: sc-2024 (dilution range: 1:100-1:400) or donkey anti-goat IgG-TR: sc-2783 (dilution range: 1:100-1:400) with UltraCruz™ Mounting Medium: sc-24941.

### DATA



HCC-4 (L-15): sc-33230. Western blot analysis of HCC-4 expression in human liver tissue extract.

### PROTOCOLS

See our web site at [www.scbt.com](http://www.scbt.com) or our catalog for detailed protocols and support products.