

# Fc $\epsilon$ RI $\alpha$ (G-14): sc-33484

## BACKGROUND

IgE Fc Receptor I binds to the Fc region of immunoglobulins  $\epsilon$  chain with high affinity, and is responsible for initiating the allergic response. Binding of allergen to receptor-bound IgE leads to cell activation and the release of mediators such as histamines, responsible for the manifestations of allergy. IgE Fc Receptor I also induces the secretion of important lymphokines, effectors of the hypersensitivity response. It is a tetramer of a heavily glycosylated  $\alpha$  chain, a  $\beta$  chain, and two disulfide linked  $\gamma$  chains. The  $\alpha$  chain is exposed to the outer surface of the cell and contains the IgE binding site. Expression of IgE Fc Receptor mRNA appears to be highly specific and has been identified in mast cells and IL-3 dependent myeloid-monocyte precursor. Alternative splicing of the genomic transcript for the  $\alpha$  chain has also been identified.

## REFERENCES

- Hackel, W., et al. 1968. Foreign body as cause of a large urethral calculus and diverticulum formation. *Z. Urol. Nephrol.* 61: 827-829.
- Shimizu, A., et al. 1988. Human and rat mast cell high-affinity immunoglobulin E receptors: characterization of putative  $\alpha$ -chain gene products. *Proc. Natl. Acad. Sci. USA* 85: 1907-1911.
- Le Coniat, M., et al. 1990. The human genes for the  $\alpha$  and  $\gamma$  subunits of the mast cell receptor for immunoglobulin E are located on human chromosome band 1q23. *Immunogenetics* 32: 183-186.
- Pang, J., et al. 1993. Characterization of the gene for the human high affinity IgE receptor (Fc  $\epsilon$  RI)  $\alpha$ -chain. *J. Immunol.* 151: 6166-6174.
- Gyimesi, E., et al. 2004. Basophil CD63 expression assay on highly sensitized atopic donor leucocytes- $\alpha$  useful method in chronic autoimmune urticaria. *Br. J. Dermatol.* 151: 388-396.
- Taube, C., et al. 2004. Mast cells, Fc  $\epsilon$  RI, and IL-13 are required for development of airway hyperresponsiveness after aerosolized allergen exposure in the absence of adjuvant. *J. Immunol.* 172: 6398-6406.

## CHROMOSOMAL LOCATION

Genetic locus: Fc $\epsilon$ r1a (mouse) mapping to 1 H3.

## SOURCE

Fc  $\epsilon$  RI $\alpha$  (G-14) is an affinity purified goat polyclonal antibody raised against a peptide mapping within an extracellular domain of Fc  $\epsilon$  RI $\alpha$  of mouse origin.

## PRODUCT

Each vial contains 200  $\mu$ g IgG in 1.0 ml of PBS with < 0.1% sodium azide and 0.1% gelatin.

Blocking peptide available for competition studies, sc-33484 P, (100  $\mu$ g peptide in 0.5 ml PBS containing < 0.1% sodium azide and 0.2% BSA).

## RESEARCH USE

For research use only, not for use in diagnostic procedures.

## APPLICATIONS

Fc  $\epsilon$  RI $\alpha$  (G-14) is recommended for detection of Fc  $\epsilon$  RI $\alpha$  of mouse origin by Western Blotting (starting dilution 1:200, dilution range 1:100-1:1000), immunoprecipitation [1–2  $\mu$ g per 100-500  $\mu$ g of total protein (1 ml of cell lysate)], immunofluorescence (starting dilution 1:50, dilution range 1:50-1:500) and solid phase ELISA (starting dilution 1:30, dilution range 1:30-1:3000).

Suitable for use as control antibody for Fc  $\epsilon$  RI $\alpha$  siRNA (m): sc-45259, Fc  $\epsilon$  RI $\alpha$  shRNA Plasmid (m): sc-45259-SH and Fc  $\epsilon$  RI $\alpha$  shRNA (m) Lentiviral Particles: sc-45259-V.

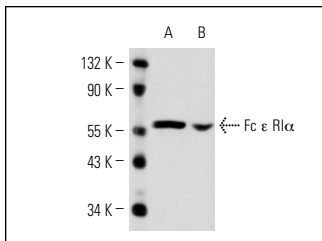
Molecular Weight of Fc  $\epsilon$  RI $\alpha$ : 60 kDa.

Positive Controls: AMJ2-C8 whole cell lysate: sc-364366 or LADMAC whole cell lysate: sc-364189

## RECOMMENDED SECONDARY REAGENTS

To ensure optimal results, the following support (secondary) reagents are recommended: 1) Western Blotting: use donkey anti-goat IgG-HRP: sc-2020 (dilution range: 1:2000-1:100,000) or Cruz Marker™ compatible donkey anti-goat IgG-HRP: sc-2033 (dilution range: 1:2000-1:5000), Cruz Marker™ Molecular Weight Standards: sc-2035, TBS Blotto A Blocking Reagent: sc-2333 and Western Blotting Luminol Reagent: sc-2048. 2) Immunoprecipitation: use Protein A/G PLUS-Agarose: sc-2003 (0.5 ml agarose/2.0 ml). 3) Immunofluorescence: use donkey anti-goat IgG-FITC: sc-2024 (dilution range: 1:100-1:400) or donkey anti-goat IgG-TR: sc-2783 (dilution range: 1:100-1:400) with UltraCruz™ Mounting Medium: sc-24941.

## DATA



Fc  $\epsilon$  RI $\alpha$  (G-14): sc-33484. Western blot analysis of Fc  $\epsilon$  RI $\alpha$  expression in AMJ2-C8 (A) and LADMAC (B) whole cell lysates.

## STORAGE

Store at 4° C, \*\*DO NOT FREEZE\*\*. Stable for one year from the date of shipment. Non-hazardous. No MSDS required.

**MONOS**  
Satisfaction  
Guaranteed

Try **Fc  $\epsilon$  RI $\alpha$  (1F2A9): sc-293167**, our highly recommended monoclonal alternative to Fc  $\epsilon$  RI $\alpha$  (G-14).