

GP78-1 (H-83): sc-33540

BACKGROUND

GP78 is the autocrine motility factor (AMF) receptor. AMF (also known as neuroleukin or NLK) is a tumor-secreted cytokine that induces *in vivo* invasion and metastasis. AMF induces tumor cell motility *in vitro* through interaction with GP78. GP78 is distributed evenly across the membranes of normal cells but localizes to the leading and trailing edges of carcinoma cells. In gastric cancer, GP78 surface expression correlates to the pathologic stage and grade of tumor penetration. AMF and GP78 interactions may be involved in a synaptic mechanism for learning and memory formation. GP78 and AMF expression increases in the hippocampi of rats after maze learning. Specifically, GP78 is a RING finger-dependent ubiquitin protein ligase (E3) of the endoplasmic reticulum (ER). GP78 recruits UBC7, an ubiquitin-conjugating enzyme (E2). The E3 activity of GP78 suggests a possible link between metastasis and ubiquitin-mediated protein degradation. In humans, alternative splicing of the GP78 mRNA gives rise to two distinct isoforms, 1 and 2, a type I membrane protein and an integral membrane protein, respectively.

REFERENCES

1. Watanabe, H., et al. 1991. Purification of human tumor cell autocrine motility factor and molecular cloning of its receptor. *J. Biol. Chem.* 266: 13442-13448.
2. Silletti, S., et al. 1993. Autocrine motility factor receptor in human bladder carcinoma: gene expression, loss of cell-contact regulation and chromosomal mapping. *Int. J. Oncol.* 3: 801-807.
3. Hirono, Y., et al. 1996. Expression of autocrine motility factor receptor correlates with disease progression in human gastric cancer. *Br. J. Cancer* 74: 2004-2007.
4. Fang, S., et al. 2001. The tumor autocrine motility factor receptor, GP78, is a ubiquitin protein ligase implicated in degradation from the endoplasmic reticulum. *Proc. Natl. Acad. Sci. USA* 98: 14422-14427.
5. Luo, Y., et al. 2002. A link between maze learning and hippocampal expression of neuroleukin and its receptor gp78. *J. Neurochem.* 80: 354-361.

CHROMOSOMAL LOCATION

Genetic locus: AMFR (human) mapping to 16q12.2.

SOURCE

GP78-1 (H-83) is a rabbit polyclonal antibody raised against amino acids 241-323 mapping at the C-terminus of GP78-1 of human origin.

PRODUCT

Each vial contains 200 µg IgG in 1.0 ml of PBS with < 0.1% sodium azide and 0.1% gelatin.

STORAGE

Store at 4° C, **DO NOT FREEZE**. Stable for one year from the date of shipment. Non-hazardous. No MSDS required.

APPLICATIONS

GP78-1 (H-83) is recommended for detection of GP78 isoform 1 of human origin by Western Blotting (starting dilution 1:200, dilution range 1:100-1:1000), immunoprecipitation [1-2 µg per 100-500 µg of total protein (1 ml of cell lysate)], immunofluorescence (starting dilution 1:50, dilution range 1:50-1:500) and solid phase ELISA (starting dilution 1:30, dilution range 1:30-1:3000); non cross-reactive with isoform 2.

Suitable for use as control antibody for GP78 siRNA (h): sc-43809, GP78 shRNA Plasmid (h): sc-43809-SH and GP78 shRNA (h) Lentiviral Particles: sc-43809-V.

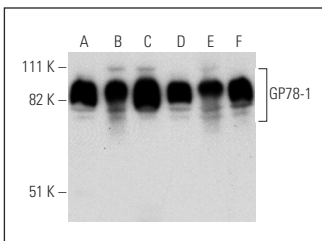
Molecular Weight of GP78-1: 78 kDa.

Positive Controls: Ramos cell lysate: sc-2216, Jurkat whole cell lysate: sc-2204 or Hep G2 cell lysate: sc-2227.

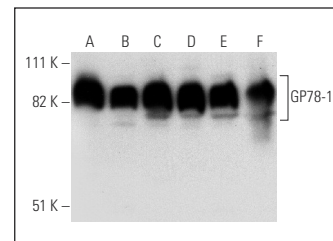
RECOMMENDED SECONDARY REAGENTS

To ensure optimal results, the following support (secondary) reagents are recommended: 1) Western Blotting: use goat anti-rabbit IgG-HRP: sc-2004 (dilution range: 1:2000-1:100,000) or Cruz Marker™ compatible goat anti-rabbit IgG-HRP: sc-2030 (dilution range: 1:2000-1:5000), Cruz Marker™ Molecular Weight Standards: sc-2035, TBS Blotto A Blocking Reagent: sc-2333 and Western Blotting Luminol Reagent: sc-2048. 2) Immunoprecipitation: use Protein A/G PLUS-Agarose: sc-2003 (0.5 ml agarose/2.0 ml). 3) Immunofluorescence: use goat anti-rabbit IgG-FITC: sc-2012 (dilution range: 1:100-1:400) or goat anti-rabbit IgG-TR: sc-2780 (dilution range: 1:100-1:400) with UltraCruz™ Mounting Medium: sc-24941.

DATA



GP78-1 (H-83): sc-33540. Western blot analysis of GP78-1 expression in K-562 (A), HT-1080 (B), MCF7 (C), Caki-1 (D), MDA-MB-231 (E) and T24 (F) whole cell lysates.



GP78-1 (H-83): sc-33540. Western blot analysis of GP78-1 expression in Ramos (A), Jurkat (B), CCD-1064Sk (C), Hep G2 (D), HeLa (E) and T47-D (F) whole cell lysates.

RESEARCH USE

For research use only, not for use in diagnostic procedures.

MONOS
Satisfaction
Guaranteed

Try **GP78-1 (F-3): sc-166358** or **GP78 (3D9): sc-293371**, our highly recommended monoclonal alternatives to GP78-1 (H-83).