

# Mcm4 (y-300): sc-33622

## BACKGROUND

The mini-chromosome maintenance (MCM) family of proteins, including MCM2, MCM3, MCM4 (Cdc21), MCM5 (Cdc46), MCM6 (Mis5) and MCM7 (Cdc47), are regulators of DNA replication that act to ensure replication occurs only once in the cell cycle. Expression of MCM proteins increases during cell growth, peaking at G1 to S phase. The MCM proteins each contain an ATP-binding motif, which is predicted to mediate ATP-dependent opening of double-stranded DNA. MCM proteins are regulated by E2F transcription factors, which induce MCM expression, and by protein kinases, which interact with MCM proteins to maintain the postreplicative state of the cell. MCM2/MCM4 complexes function as substrates for Cdc2/cyclin B *in vitro*. Cleavage of MCM3, which can be prevented by caspase inhibitors, results in the in-activation of the MCM complex (composed of at least MCM proteins 2-6) during apoptosis. A complex composed of MCM4, MCM6 and MCM7 has been shown to be involved in DNA helicase activity, and MCM5 is involved in IFN $\gamma$ -induced Stat1 $\alpha$  transcription activation.

## REFERENCES

1. Hennessy, K., et al. 1991. A group of interacting yeast DNA replication genes. *Genes Dev.* 5: 958-969.
2. Chen, Y., et al. 1992. Cdc46/MCM5, a yeast protein whose subcellular localization is cell cycle-regulated, is involved in DNA replication at autonomously replicating sequences. *Proc. Natl. Acad. Sci. USA* 89: 10459-10463.
3. Yan, H., et al. 1993. Cell cycle-regulated nuclear localization of Mcm2 and Mcm3, which are required for the initiation of DNA synthesis at chromosomal replication origins in yeast. *Genes Dev.* 7: 2149-2160.
4. Dalton, S. and Whitbread, L. 1995. Cell cycle-regulated nuclear import and export of Cdc47, a protein essential for initiation of DNA replication in budding yeast. *Proc. Natl. Acad. Sci. USA* 92: 2514-2518.
5. McBroom, L.D. and Sadowski, P.D. 1995. Functional analysis of the Abf1-binding sites within the Ya regions of the MATa and HMRA loci of *Saccharomyces cerevisiae*. *Curr. Genet.* 28: 1-11.
6. Toyn, J.H., et al. 1995. The activation of DNA replication in yeast. *Trends Biochem. Sci.* 20: 70-73.
7. Cocker, J.H., et al. 1996. An essential role for the Cdc6 protein in forming the pre-replicative complexes of budding yeast. *Nature* 379: 180-182.
8. Hopwood, B. and Dalton, S. 1996. Cdc45p assembles into a complex with Cdc46/Mcm5p, is required for minichromosome maintenance, and is essential for chromosomal DNA replication. *Proc. Natl. Acad. Sci. USA* 93: 12309-12314.

## SOURCE

Mcm4 (y-300) is a rabbit polyclonal antibody raised against amino acids 1-300 mapping at the N-terminus of Mcm4 of *Saccharomyces cerevisiae* origin.

## PRODUCT

Each vial contains 200  $\mu$ g IgG in 1.0 ml of PBS with < 0.1% sodium azide and 0.1% gelatin.

## APPLICATIONS

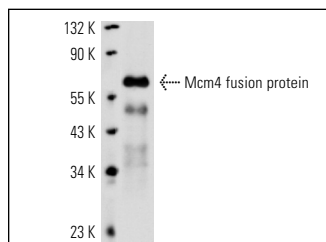
Mcm4 (y-300) is recommended for detection of Mcm4 of *Saccharomyces cerevisiae* origin by Western Blotting (starting dilution 1:200, dilution range 1:100-1:1000), immunoprecipitation [1-2  $\mu$ g per 100-500  $\mu$ g of total protein (1 ml of cell lysate)], immunofluorescence (starting dilution 1:50, dilution range 1:50-1:500) and solid phase ELISA (starting dilution 1:30, dilution range 1:30-1:3000).

Molecular Weight of Mcm4: 100 kDa.

## RECOMMENDED SECONDARY REAGENTS

To ensure optimal results, the following support (secondary) reagents are recommended: 1) Western Blotting: use goat anti-rabbit IgG-HRP: sc-2004 (dilution range: 1:2000-1:100,000) or Cruz Marker™ compatible goat anti-rabbit IgG-HRP: sc-2030 (dilution range: 1:2000-1:5000), Cruz Marker™ Molecular Weight Standards: sc-2035, TBS Blotto A Blocking Reagent: sc-2333 and Western Blotting Luminol Reagent: sc-2048. 2) Immunoprecipitation: use Protein A/G PLUS-Agarose: sc-2003 (0.5 ml agarose/2.0 ml). 3) Immunofluorescence: use goat anti-rabbit IgG-FITC: sc-2012 (dilution range: 1:100-1:400) or goat anti-rabbit IgG-TR: sc-2780 (dilution range: 1:100-1:400) with UltraCruz™ Mounting Medium: sc-24941.

## DATA



Mcm4 (y-300): sc-33622. Western blot analysis of yeast recombinant Mcm4 fusion protein.

## STORAGE

Store at 4° C, \*\*DO NOT FREEZE\*\*. Stable for one year from the date of shipment. Non-hazardous. No MSDS required.

## RESEARCH USE

For research use only, not for use in diagnostic procedures.

## PROTOCOLS

See our web site at [www.scbt.com](http://www.scbt.com) or our catalog for detailed protocols and support products.

**MONOS**  
Satisfaction  
Guaranteed

Try **Mcm4 (C-12): sc-166036** or **Mcm4 (D-4): sc-166193**, our highly recommended monoclonal alternatives to Mcm4 (y-300).