

caspase-7 p20 (H-65): sc-33773

BACKGROUND

A unique family of cysteine proteases has been described that differs in sequence, structure and substrate specificity from any previously described protease family. This family, CED-3/caspase-1, is comprised of caspase-1, caspase-2, caspase-3, caspase-4, caspase-6, caspase-7 (also designated Mch3, ICE-LAP3 or CMH-1), caspase-9 and caspase-10. CED-3/caspase-1 family members function as key components of the apoptotic machinery and act to destroy specific target proteins which are critical to cellular longevity. Poly(ADP-ribose) polymerase plays an integral role in surveying for DNA mutations and double strand breaks. Caspase-3, caspase-7 and caspase-9, but not caspase-1, have been shown to cleave the nuclear protein PARP into an apoptotic fragment. Caspase-6, but not caspase-3, has been shown to cleave the nuclear lamins which are critical to maintaining the integrity of the nuclear envelope and cellular morphology. Caspase-10 has been shown to activate caspase-3 and caspase-7 in response to apoptotic stimuli.

CHROMOSOMAL LOCATION

Genetic locus: CASP7 (human) mapping to 10q25.3; Casp7 (mouse) mapping to 19 D2.

SOURCE

caspase-7 p20 (H-65) is a rabbit polyclonal antibody raised against amino acids 76-140 mapping within an internal region of caspase-7 p20 of human origin.

PRODUCT

Each vial contains 200 µg IgG in 1.0 ml of PBS with < 0.1% sodium azide and 0.1% gelatin.

APPLICATIONS

caspase-7 p20 (H-65) is recommended for detection of p20 subunit and precursor of caspase-7 of mouse, rat and human origin by Western Blotting (starting dilution 1:200, dilution range 1:100-1:1000), immunoprecipitation [1-2 µg per 100-500 µg of total protein (1 ml of cell lysate)], immunofluorescence (starting dilution 1:50, dilution range 1:50-1:500) and solid phase ELISA (starting dilution 1:30, dilution range 1:30-1:3000).

caspase-7 p20 (H-65) is also recommended for detection of p20 subunit and precursor of caspase-7 in additional species, including equine, canine and bovine.

Suitable for use as control antibody for caspase-7 siRNA (h): sc-29929, caspase-7 siRNA (m): sc-29928, caspase-7 shRNA Plasmid (h): sc-29929-SH, caspase-7 shRNA Plasmid (m): sc-29928-SH, caspase-7 shRNA (h) Lentiviral Particles: sc-29929-V and caspase-7 shRNA (m) Lentiviral Particles: sc-29928-V.

Molecular Weight of procaspase-7 splice variants: 28-38 kDa.

Molecular Weight of caspase-7 p20 subunit: 20 kDa.

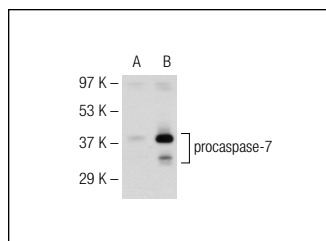
Molecular Weight of caspase-7 p10 subunit: 10 kDa.

Positive Controls: caspase-7 (h): 293 Lysate: sc-112228, caspase-7 (m): 293T Lysate: sc-119028 or HeLa whole cell lysate: sc-2200.

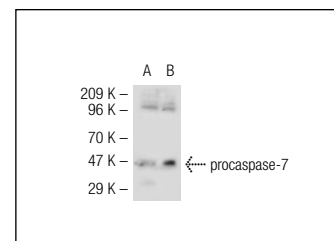
RECOMMENDED SECONDARY REAGENTS

To ensure optimal results, the following support (secondary) reagents are recommended: 1) Western Blotting: use goat anti-rabbit IgG-HRP: sc-2004 (dilution range: 1:2000-1:100,000) or Cruz Marker™ compatible goat anti-rabbit IgG-HRP: sc-2030 (dilution range: 1:2000-1:5000), Cruz Marker™ Molecular Weight Standards: sc-2035, TBS Blotto A Blocking Reagent: sc-2333 and Western Blotting Luminol Reagent: sc-2048. 2) Immunoprecipitation: use Protein A/G PLUS-Agarose: sc-2003 (0.5 ml agarose/2.0 ml). 3) Immunofluorescence: use goat anti-rabbit IgG-FITC: sc-2012 (dilution range: 1:100-1:400) or goat anti-rabbit IgG-TR: sc-2780 (dilution range: 1:100-1:400) with UltraCruz™ Mounting Medium: sc-24941.

DATA



caspase-7 p20 (H-65): sc-33773. Western blot analysis of caspase-7 expression in non-transfected: sc-110760 (A) and human caspase-7 transfected: sc-112228 (B) 293 whole cell lysates.



caspase-7 p20 (H-65): sc-33773. Western blot analysis of caspase-7 expression in non-transfected: sc-117752 (A) and mouse caspase-7 transfected: sc-119028 (B) 293T whole cell lysates.

STORAGE

Store at 4° C, **DO NOT FREEZE**. Stable for one year from the date of shipment. Non-hazardous. No MSDS required.

RESEARCH USE

For research use only, not for use in diagnostic procedures.

PROTOCOLS

See our web site at www.scbt.com or our catalog for detailed protocols and support products.

MONOS
Satisfaction
Guaranteed

Try **caspase-7 p20 (B-5): sc-28295** or **caspase-7 p20 (C-12): sc-133248**, our highly recommended monoclonal alternatives to caspase-7 p20 (H-65).