

## TRAF6 (S-20): sc-33895

### BACKGROUND

Tumor necrosis factor receptor-associated factor 6 (TRAF6) regulates adaptive immunity, innate immunity and bone metabolism. TRAF6 is a ubiquitin (Ub) ligase that mediates the activation of protein kinases, such as transforming growth factor  $\beta$ -activated kinase (TAK1) and I $\kappa$ B kinase (IKK), by catalyzing the formation of a unique polyubiquitin chain linked through Lys 63 of Ub. TRAF6 is essential for activating NF $\kappa$ B signaling pathway in response to interleukin-1 and Toll-like receptor ligands. The coiled-coil domain of TRAF6 is essential for its auto-ubiquitination and activating NF $\kappa$ B signaling pathway. TRAF6 interacts with various protein kinases including IRAK1/IRAK, SRC and PKC $\zeta$ , which provides a link between distinct signaling pathways.

### REFERENCES

1. Xiong, H., et al. 2004. Interaction of TRAF6 with MAST205 regulates NF $\kappa$ B activation and MAST205 stability. *J. Biol. Chem.* 279: 43675-43683.
2. Yang, K., et al. 2004. The coiled-coil domain of TRAF6 is essential for its auto-ubiquitination. *Biochem. Biophys. Res. Commun.* 324: 432-439.

### CHROMOSOMAL LOCATION

Genetic locus: TRAF6 (human) mapping to 11p12; Traf6 (mouse) mapping to 2 E2.

### SOURCE

TRAF6 (S-20) is an affinity purified goat polyclonal antibody raised against a peptide mapping near the N-terminus of TRAF6 of human origin.

### PRODUCT

Each vial contains 200  $\mu$ g IgG in 1.0 ml of PBS with < 0.1% sodium azide and 0.1% gelatin.

Blocking peptide available for competition studies, sc-33895 P, (100  $\mu$ g peptide in 0.5 ml PBS containing < 0.1% sodium azide and 0.2% BSA).

### APPLICATIONS

TRAF6 (S-20) is recommended for detection of TRAF6 of mouse, rat and human origin by Western Blotting (starting dilution 1:200, dilution range 1:100-1:1000), immunofluorescence (starting dilution 1:50, dilution range 1:50-1:500), immunohistochemistry (including paraffin-embedded sections) (starting dilution 1:50, dilution range 1:50-1:500) and solid phase ELISA (starting dilution 1:30, dilution range 1:30-1:3000).

TRAF6 (S-20) is also recommended for detection of TRAF6 in additional species, including equine, canine, bovine, porcine and avian.

Suitable for use as control antibody for TRAF6 siRNA (h): sc-36717, TRAF6 siRNA (m): sc-36718, TRAF6 shRNA Plasmid (h): sc-36717-SH, TRAF6 shRNA Plasmid (m): sc-36718-SH, TRAF6 shRNA (h) Lentiviral Particles: sc-36717-V and TRAF6 shRNA (m) Lentiviral Particles: sc-36718-V.

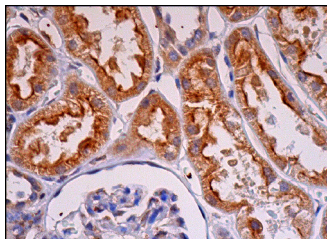
Molecular Weight of TRAF6: 60 kDa.

Positive Controls: mouse kidney extract: sc-2255, HeLa whole cell lysate: sc-2200 or WEHI-231 whole cell lysate: sc-2213.

### RECOMMENDED SECONDARY REAGENTS

To ensure optimal results, the following support (secondary) reagents are recommended: 1) Western Blotting: use donkey anti-goat IgG-HRP: sc-2020 (dilution range: 1:2000-1:100,000) or Cruz Marker<sup>™</sup> compatible donkey anti-goat IgG-HRP: sc-2033 (dilution range: 1:2000-1:5000), Cruz Marker<sup>™</sup> Molecular Weight Standards: sc-2035, TBS Blotto A Blocking Reagent: sc-2333 and Western Blotting Luminol Reagent: sc-2048. 2) Immunofluorescence: use donkey anti-goat IgG-FITC: sc-2024 (dilution range: 1:100-1:400) or donkey anti-goat IgG-TR: sc-2783 (dilution range: 1:100-1:400) with UltraCruz<sup>™</sup> Mounting Medium: sc-24941. 3) Immunohistochemistry: use ImmunoCruz<sup>™</sup>: sc-2053 or ABC: sc-2023 goat IgG Staining Systems.

### DATA



TRAF6 (S-20): sc-33895. Immunoperoxidase staining of formalin fixed, paraffin-embedded human kidney tissue showing cytoplasmic and membrane staining of cells in tubules.

### SELECT PRODUCT CITATIONS

1. Zhang, X., et al. 2009. IFN- $\beta$ 1a inhibits the secretion of Th17-polarizing cytokines in human dendritic cells via TLR7 up-regulation. *J. Immunol.* 182: 3928-3936.

### STORAGE

Store at 4° C, **\*\*DO NOT FREEZE\*\***. Stable for one year from the date of shipment. Non-hazardous. No MSDS required.

### RESEARCH USE

For research use only, not for use in diagnostic procedures.

### PROTOCOLS

See our web site at [www.scbt.com](http://www.scbt.com) or our catalog for detailed protocols and support products.

**MONOS**  
Satisfaction  
Guaranteed

Try **TRAF6 (D-10): sc-8409**, our highly recommended monoclonal alternative to TRAF6 (S-20). Also, for AC, HRP, FITC, PE, Alexa Fluor<sup>®</sup> 488 and Alexa Fluor<sup>®</sup> 647 conjugates, see **TRAF6 (D-10): sc-8409**.