

glypican-2 (N-17): sc-33992

BACKGROUND

Glypican-1 (GPC1), glypican-2 (GPC2) and glypican-3 (GPC3) are members of the glypican family of heparan sulfate proteoglycans, which attach to the cell membrane via a glycosylphosphatidylinositol (GPI) anchor. Cell-surface heparan sulfate proteoglycans participate in molecular events that regulate cell adhesion, migration and proliferation. Glypican-2, a cell surface proteoglycan bearing heparan sulfate, may have a function related to the motile behaviors of developing neurons. Ligation of cell-surface glypican-2 with midkine (MK) or an antibody against epitope-tagged glypican-2 induces cell adhesion and promotes neurite outgrowth. MK binds to heparan sulfate chains of glypican-2 in a manner similar to Syndecan-3, but different localization of epitope-tagged glypican-2 and Syndecan-3 on the surface of N2 α cells suggests that they may play different roles in MK-mediated neural function.

CHROMOSOMAL LOCATION

Genetic locus: GPC2 (human) mapping to 7q22.1; Gpc2 (mouse) mapping to 5 G2.

SOURCE

glypican-2 (N-17) is an affinity purified goat polyclonal antibody raised against a peptide mapping at the N-terminus of glypican-2 of human origin.

PRODUCT

Each vial contains 200 μ g IgG in 1.0 ml of PBS with < 0.1% sodium azide and 0.1% gelatin.

Blocking peptide available for competition studies, sc-33992 P, (100 μ g peptide in 0.5 ml PBS containing < 0.1% sodium azide and 0.2% BSA).

STORAGE

Store at 4° C, ****DO NOT FREEZE****. Stable for one year from the date of shipment. Non-hazardous. No MSDS required.

APPLICATIONS

glypican-2 (N-17) is recommended for detection of glypican-2 of mouse, rat and human origin by Western Blotting (starting dilution 1:200, dilution range 1:100-1:1000), immunoprecipitation [1-2 μ g per 100-500 μ g of total protein (1 ml of cell lysate)], immunofluorescence (starting dilution 1:50, dilution range 1:50-1:500) and solid phase ELISA (starting dilution 1:30, dilution range 1:30-1:3000).

glypican-2 (N-17) is also recommended for detection of glypican-2 in additional species, including canine.

Suitable for use as control antibody for glypican-2 siRNA (h): sc-44386, glypican-2 siRNA (m): sc-44387, glypican-2 shRNA Plasmid (h): sc-44386-SH, glypican-2 shRNA Plasmid (m): sc-44387-SH, glypican-2 shRNA (h) Lentiviral Particles: sc-44386-V and glypican-2 shRNA (m) Lentiviral Particles: sc-44387-V.

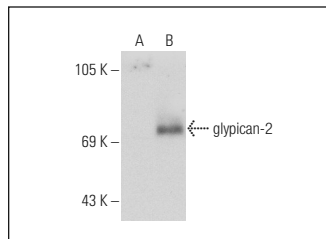
Molecular Weight of glypican-2: 63 kDa.

Positive Controls: glypican-2 (h): 293T Lysate: sc-114230.

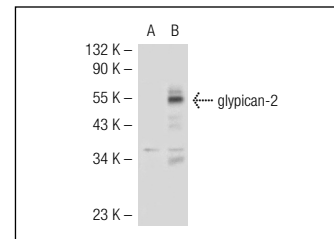
RECOMMENDED SECONDARY REAGENTS

To ensure optimal results, the following support (secondary) reagents are recommended: 1) Western Blotting: use donkey anti-goat IgG-HRP: sc-2020 (dilution range: 1:2000-1:100,000) or Cruz Marker™ compatible donkey anti-goat IgG-HRP: sc-2033 (dilution range: 1:2000-1:5000), Cruz Marker™ Molecular Weight Standards: sc-2035, TBS Blotto A Blocking Reagent: sc-2333 and Western Blotting Luminol Reagent: sc-2048. 2) Immunoprecipitation: use Protein A/G PLUS-Agarose: sc-2003 (0.5 ml agarose/2.0 ml). 3) Immunofluorescence: use donkey anti-goat IgG-FITC: sc-2024 (dilution range: 1:100-1:400) or donkey anti-goat IgG-TR: sc-2783 (dilution range: 1:100-1:400) with UltraCruz™ Mounting Medium: sc-24941.

DATA



glypican-2 (N-17): sc-33992. Western blot analysis of glypican-2 expression in non-transfected: sc-117752 (A) and human glypican-2 transfected: sc-176472 (B) 293T whole cell lysates.



glypican-2 (N-17): sc-33992. Western blot analysis of glypican-2 expression in non-transfected: sc-117752 (A) and human glypican-2 transfected: sc-114230 (B) 293T whole cell lysates.

RESEARCH USE

For research use only, not for use in diagnostic procedures.

PROTOCOLS

See our web site at www.scbt.com or our catalog for detailed protocols and support products.



Try **glypican-2 (F-5): sc-393824**, our highly recommended monoclonal alternative to glypican-2 (N-17).