

glypican-2 (P-16): sc-33995

BACKGROUND

Glypican-1 (GPC1), glypican-2 (GPC2) and glypican-3 (GPC3) are members of the glypican family of heparan sulfate proteoglycans, which attach to the cell membrane via a glycosylphosphatidylinositol (GPI) anchor. Cell-surface heparan sulfate proteoglycans participate in molecular events that regulate cell adhesion, migration and proliferation. Glypican-2, a cell surface proteoglycan bearing heparan sulfate, may have a function related to the motile behaviors of developing neurons. Ligation of cell-surface glypican-2 with midkine (MK) or an antibody against epitope-tagged glypican-2 induces cell adhesion and promotes neurite outgrowth. MK binds to heparan sulfate chains of glypican-2 in a manner similar to Syndecan-3, but different localization of epitope-tagged glypican-2 and Syndecan-3 on the surface of N2 α cells suggests that they may play different roles in MK-mediated neural function.

CHROMOSOMAL LOCATION

Genetic locus: GPC2 (human) mapping to 7q22.1; Gpc2 (mouse) mapping to 5 G2.

SOURCE

glypican-2 (P-16) is an affinity purified goat polyclonal antibody raised against a peptide mapping within an internal region of glypican-2 of human origin.

PRODUCT

Each vial contains 200 μ g IgG in 1.0 ml of PBS with < 0.1% sodium azide and 0.1% gelatin.

Blocking peptide available for competition studies, sc-33995 P, (100 μ g peptide in 0.5 ml PBS containing < 0.1% sodium azide and 0.2% BSA).

STORAGE

Store at 4° C, ****DO NOT FREEZE****. Stable for one year from the date of shipment. Non-hazardous. No MSDS required.

RESEARCH USE

For research use only, not for use in diagnostic procedures.

APPLICATIONS

glypican-2 (P-16) is recommended for detection of glypican-2 of human and, to a lesser extent, mouse and rat origin by Western Blotting (starting dilution 1:200, dilution range 1:100-1:1000), immunoprecipitation [1-2 μ g per 100-500 μ g of total protein (1 ml of cell lysate)], immunofluorescence (starting dilution 1:50, dilution range 1:50-1:500) and solid phase ELISA (starting dilution 1:30, dilution range 1:30-1:3000).

Suitable for use as control antibody for glypican-2 siRNA (h): sc-44386, glypican-2 siRNA (m): sc-44387, glypican-2 shRNA Plasmid (h): sc-44386-SH, glypican-2 shRNA Plasmid (m): sc-44387-SH, glypican-2 shRNA (h) Lentiviral Particles: sc-44386-V and glypican-2 shRNA (m) Lentiviral Particles: sc-44387-V.

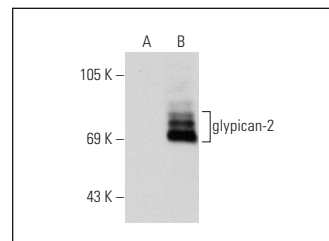
Molecular Weight of glypican-2: 63 kDa.

Positive Controls: glypican-2 (h): 293T Lysate: sc-114230.

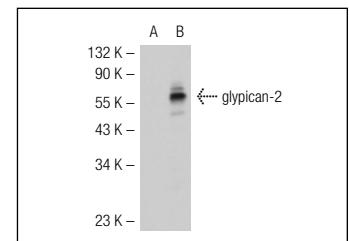
RECOMMENDED SECONDARY REAGENTS

To ensure optimal results, the following support (secondary) reagents are recommended: 1) Western Blotting: use donkey anti-goat IgG-HRP: sc-2020 (dilution range: 1:2000-1:100,000) or Cruz Marker™ compatible donkey anti-goat IgG-HRP: sc-2033 (dilution range: 1:2000-1:5000), Cruz Marker™ Molecular Weight Standards: sc-2035, TBS Blotto A Blocking Reagent: sc-2333 and Western Blotting Luminol Reagent: sc-2048. 2) Immunoprecipitation: use Protein A/G PLUS-Agarose: sc-2003 (0.5 ml agarose/2.0 ml). 3) Immunofluorescence: use donkey anti-goat IgG-FITC: sc-2024 (dilution range: 1:100-1:400) or donkey anti-goat IgG-TR: sc-2783 (dilution range: 1:100-1:400) with UltraCruz™ Mounting Medium: sc-24941.

DATA



glypican-2 (P-16): sc-33995. Western blot analysis of glypican-2 expression in non-transfected: sc-117752 (A) and human glypican-2 transfected: sc-176472 (B) 293T whole cell lysates.



glypican-2 (P-16): sc-33995. Western blot analysis of glypican-2 expression in non-transfected: sc-117752 (A) and human glypican-2 transfected: sc-114230 (B) 293T whole cell lysates.

PROTOCOLS

See our web site at www.scbt.com or our catalog for detailed protocols and support products.

MONOS
Satisfaction
Guaranteed

Try **glypican-2 (F-5): sc-393824**, our highly recommended monoclonal alternative to glypican-2 (P-16).