

# Psoriasin (C-15): sc-34075

## BACKGROUND

Psoriasin, also known as PSOR1 or S-100A7, is a 101 amino acid protein that belongs to the S-100 family of calcium binding proteins and is secreted via a non-classical secretory pathway into the cytoplasm. Expressed in fetal ear, tongue and skin, Psoriasin is thought to function in the regulation of many cellular processes, including the cell cycle, cell progression and cellular differentiation. Psoriasin contains two EF-hand domains and is highly upregulated in psoriatic epidermis, as well as in bladder squamous cell carcinoma and breast cancer tissue, suggesting a possible role in carcinogenesis. The gene encoding Psoriasin and the related S100A15 gene are thought to have diverged from one mouse gene, designated S100A15. In humans, the S100A15 gene encodes a calcium binding protein, also known as S-100A7A, that shares 95% sequence identity with Psoriasin.

## REFERENCES

1. Brodersen, D.E., et al. 1998. EF-hands at atomic resolution: the structure of human psoriasin (S-100A7) solved by MAD phasing. *Structure* 6: 477-489.
2. Ruse, M., et al. 2003. S-100A7 (psoriasin) interacts with epidermal fatty acid binding protein and localizes in focal adhesion-like structures in cultured keratinocytes. *J. Invest. Dermatol.* 121: 132-141.

## CHROMOSOMAL LOCATION

Genetic locus: S100A7/S100A7A (human) mapping to 1q21.3.

## SOURCE

Psoriasin (C-15) is an affinity purified goat polyclonal antibody raised against a peptide mapping near the C-terminus of Psoriasin of human origin.

## PRODUCT

Each vial contains 200 µg IgG in 1.0 ml of PBS with < 0.1% sodium azide and 0.1% gelatin.

Blocking peptide available for competition studies, sc-34075 P, (100 µg peptide in 0.5 ml PBS containing < 0.1% sodium azide and 0.2% BSA).

## RESEARCH USE

For research use only, not for use in diagnostic procedures.

## APPLICATIONS

Psoriasin (C-15) is recommended for detection of Psoriasin and S-100A15 of human origin by Western Blotting (starting dilution 1:200, dilution range 1:100-1:1000), immunoprecipitation [1-2 µg per 100-500 µg of total protein (1 ml of cell lysate)], immunofluorescence (starting dilution 1:50, dilution range 1:50-1:500), immunohistochemistry (including paraffin-embedded sections) (starting dilution 1:50, dilution range 1:50-1:500) and solid phase ELISA (starting dilution 1:30, dilution range 1:30-1:3000).

Psoriasin (C-15) is also recommended for detection of Psoriasin and S-100A15 in additional species, including equine.

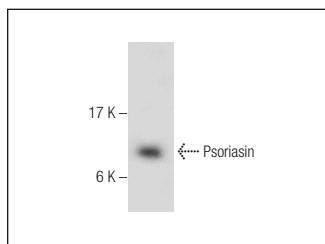
Molecular Weight of Psoriasin: 11 kDa.

Positive Controls: SCC-4 whole cell lysate: sc-364363.

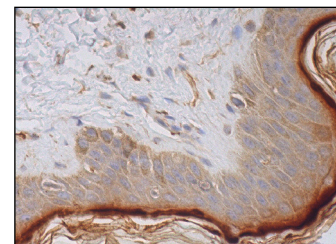
## RECOMMENDED SECONDARY REAGENTS

To ensure optimal results, the following support (secondary) reagents are recommended: 1) Western Blotting: use donkey anti-goat IgG-HRP: sc-2020 (dilution range: 1:2000-1:100,000) or Cruz Marker™ compatible donkey anti-goat IgG-HRP: sc-2033 (dilution range: 1:2000-1:5000), Cruz Marker™ Molecular Weight Standards: sc-2035, TBS Blotto A Blocking Reagent: sc-2333 and Western Blotting Luminol Reagent: sc-2048. 2) Immunoprecipitation: use Protein A/G PLUS-Agarose: sc-2003 (0.5 ml agarose/2.0 ml). 3) Immunofluorescence: use donkey anti-goat IgG-FITC: sc-2024 (dilution range: 1:100-1:400) or donkey anti-goat IgG-TR: sc-2783 (dilution range: 1:100-1:400) with UltraCruz™ Mounting Medium: sc-24941. 4) Immunohistochemistry: use ImmunoCruz™: sc-2053 or ABC: sc-2023 goat IgG Staining Systems.

## DATA



Psoriasin (C-15): sc-34075. Western blot analysis of Psoriasin expression in SCC-4 whole cell lysate.



Psoriasin (C-15): sc-34075. Immunoperoxidase staining of formalin fixed, paraffin-embedded human skin tissue showing cytoplasmic staining of glandular cells, keratinocytes, Langerhans cells and melanocytes.

## STORAGE

Store at 4° C, **\*\*DO NOT FREEZE\*\***. Stable for one year from the date of shipment. Non-hazardous. No MSDS required.

## PROTOCOLS

See our web site at [www.scbt.com](http://www.scbt.com) or our catalog for detailed protocols and support products.

**MONOS**  
Satisfaction  
Guaranteed

Try **Psoriasin (H-6): sc-166869** or **Psoriasin (H-8): sc-377084**, our highly recommended monoclonal alternatives to Psoriasin (C-15).