

MPO heavy chain (E-15): sc-34159

BACKGROUND

The heme protein myeloperoxidase (MPO) is a major component of azurophilic granules of neutrophils and polymorphonuclear leukocytes. Optimal oxygen-dependent microbiocidal activity depends on MPO as the critical enzyme for the generation of hypochlorous acid and other toxic oxygen products. The MPO precursor is synthesized during the promyelocytic stage of myeloid differentiation and is subsequently processed and transported intracellularly to the lysosomes. The precursor undergoes cotranslational N-linked glycosylation to produce a glycoprotein. Glucosidases in the endoplasmic reticulum (ER) or early *cis* Golgi convert the pro-MPO to a form which is sorted into a prelysosomal compartment, which undergoes final proteolytic maturation to native MPO, a pair of heavy-light protomers. In normal neutrophils, MPO is expressed as a dimer. Calreticulin, a calcium-binding protein residing in the ER, interacts specifically with fully glycosylated apopro-MPO. iMPO mRNA is abundant in human promyelocytic HL-60 and mouse myeloid leukemia NFS-60 cells. MPO is expressed at high levels in circulating neutrophils and monocytes but is not detectable in microglia, brain-specific macrophages or normal brain tissue.

REFERENCES

- Johnson, K.R., et al. 1987. Characterization of cDNA clones for human myeloperoxidase: predicted amino acid sequence and evidence for multiple mRNA species. *Nucleic Acids Res.* 15: 2013-2028.
- Morishita, K., et al. 1987. Molecular cloning and characterization of cDNA for human myeloperoxidase. *J. Biol. Chem.* 262: 3844-3851.
- Nauseef, W.M. 1987. Posttranslational processing of a human myeloid lysosomal protein, myeloperoxidase. *Blood* 70: 1143-1150.
- Nauseef, W.M., et al. 1988. Biosynthesis and processing of myeloperoxidase—a marker for myeloid cell differentiation. *Eur. J. Haematol.* 40: 97-110.
- Homma, T., et al. 1989. Preparation and characterization of monoclonal antibodies against human myeloperoxidase. *Arch. Biochem. Biophys.* 273: 189-196.
- Zuurbier, K.W., et al. 1992. Human hemi-myeloperoxidase. Initial chlorinating activity at neutral pH, compound II and III formation, and stability towards hypochlorous acid and high temperature. *Eur. J. Biochem.* 205: 737-742.
- Nauseef, W.M., et al. 1995. Calreticulin functions as a molecular chaperone in the biosynthesis of myeloperoxidase. *J. Biol. Chem.* 270: 4741-4747.
- Reynolds, W.F., et al. 1999. Myeloperoxidase polymorphism is associated with gender specific risk for Alzheimer's disease. *Exp. Neurol.* 155: 31-41.

CHROMOSOMAL LOCATION

Genetic locus: MPO (human) mapping to 17q22; Mpo (mouse) mapping to 11 C.

SOURCE

MPO heavy chain (E-15) is an affinity purified goat polyclonal antibody raised against a peptide mapping near the C-terminus of MPO of human origin.

PRODUCT

Each vial contains 200 µg IgG in 1.0 ml of PBS with < 0.1% sodium azide and 0.1% gelatin.

Blocking peptide available for competition studies, sc-34159 P, (100 µg peptide in 0.5 ml PBS containing < 0.1% sodium azide and 0.2% BSA).

APPLICATIONS

MPO heavy chain (E-15) is recommended for detection of MPO heavy chain of mouse, rat and human origin by Western Blotting (starting dilution 1:200, dilution range 1:100-1:1000), immunoprecipitation [1-2 µg per 100-500 µg of total protein (1 ml of cell lysate)], immunofluorescence (starting dilution 1:50, dilution range 1:50-1:500), immunohistochemistry (including paraffin-embedded sections) (starting dilution 1:50, dilution range 1:50-1:500) and solid phase ELISA (starting dilution 1:30, dilution range 1:30-1:3000).

MPO heavy chain (E-15) is also recommended for detection of MPO heavy chain in additional species, including canine.

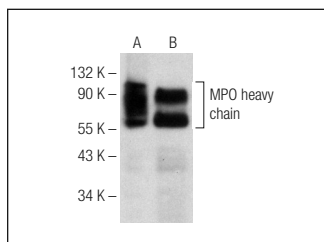
Suitable for use as control antibody for MPO siRNA (h): sc-43941, MPO siRNA (m): sc-43942, MPO shRNA Plasmid (h): sc-43941-SH, MPO shRNA Plasmid (m): sc-43942-SH, MPO shRNA (h) Lentiviral Particles: sc-43941-V and MPO shRNA (m) Lentiviral Particles: sc-43942-V.

Molecular Weight of MPO heavy-light protomer: 72 kDa.

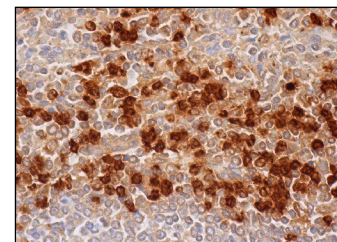
Molecular Weight of MPO dimer: 140 kDa.

Positive Controls: HL-60 whole cell lysate: sc-2209, PBL-1 whole cell lysate: sc-364790 or NIH/3T3 whole cell lysate: sc-2210.

DATA



MPO heavy chain (E-15): sc-34159. Western blot analysis of MPO heavy chain expression in HL-60 (A) and human PBL (B) whole cell lysates.



MPO heavy chain (E-15): sc-34159. Immunoperoxidase staining of formalin fixed, paraffin-embedded human spleen tissue showing cytoplasmic, membrane and nuclear staining of cells in red pulp.

STORAGE

Store at 4° C, ****DO NOT FREEZE****. Stable for one year from the date of shipment. Non-hazardous. No MSDS required.

RESEARCH USE

For research use only, not for use in diagnostic procedures.

PROTOCOLS

See our web site at www.scbt.com or our catalog for detailed protocols and support products.