

SRp55 (G-15): sc-34198

BACKGROUND

Pre-mRNA splicing is a critical step in the posttranscriptional regulation of gene expression. Several protein complexes are involved in proper mRNA splicing and transport. Serine/arginine-rich (SR) proteins SRp55, SRp30c and HtrA2β1 regulate exon 2 and 10 splicing. The first two inhibit both exons and SRp55 also plays a role in exon inclusion after the removal of intronic splicing silencer sequences. SRp55 plays a major role in maintaining normal FGFR1 α-exon inclusion.

REFERENCES

1. Ring, H.Z., et al. 1994. The SR protein B52/SRp55 is essential for *Drosophila* development. *Mol. Cell. Biol.* 14: 7499-7506.
2. Nagel, R.J., et al. 1998. Specific binding of an exonic splicing enhancer by the pre-mRNA splicing factor SRp55. *RNA* 4: 11-23.
3. Lemaire, R., et al. 1999. SF2 and SRp55 regulation of CD45 exon 4 skipping during T cell activation. *Eur. J. Immunol.* 29: 823-837.
4. Tran, Q., et al. 2003. SRp55 is a regulator of calcitonin/CGRP alternative RNA splicing. *Biochemistry* 42: 951-957.
5. Lai, M.C., et al. 2003. Differential effects of hyperphosphorylation on splicing factor SRp55. *Biochem. J.* 371: 937-945.
6. Tran, Q., et al. 2003. Human transformer 2β and SRp55 interact with a calcitonin-specific splice enhancer. *Biochim. Biophys. Acta* 1625: 141-152.
7. Jin, W., et al. 2004. Enhancer-dependent splicing of FGFR1 α-exon is repressed by RNA interference-mediated down-regulation of SRp55. *Cancer Res.* 64: 8901-8905.
8. Yu, Q., et al. 2004. A minimal length between Tau exon 10 and 11 is required for correct splicing of exon 10. *J. Neurochem.* 90: 164-172.
9. Wang, Y., et al. 2005. Tau exons 2 and 10, which are misregulated in neurodegenerative diseases, are partly regulated by silencers which bind a SRp30c.SRp55 complex that either recruits or antagonizes HtrA2β1. *J. Biol. Chem.* 280: 14230-14239.

CHROMOSOMAL LOCATION

Genetic locus: SFRS6 (human) mapping to 20q13.11; Sfrs6 (mouse) mapping to 2 H2.

SOURCE

SRp55 (G-15) is an affinity purified goat polyclonal antibody raised against a peptide mapping within an internal region of SRp55 of human origin.

PRODUCT

Each vial contains 200 µg IgG in 1.0 ml of PBS with < 0.1% sodium azide and 0.1% gelatin.

Blocking peptide available for competition studies, sc-34198 P, (100 µg peptide in 0.5 ml PBS containing < 0.1% sodium azide and 0.2% BSA).

RESEARCH USE

For research use only, not for use in diagnostic procedures.

APPLICATIONS

SRp55 (G-15) is recommended for detection of SRp55 of mouse, rat and human origin by Western Blotting (starting dilution 1:200, dilution range 1:100-1:1000), immunoprecipitation [1-2 µg per 100-500 µg of total protein (1 ml of cell lysate)], immunofluorescence (starting dilution 1:50, dilution range 1:50-1:500) and solid phase ELISA (starting dilution 1:30, dilution range 1:30-1:3000).

SRp55 (G-15) is also recommended for detection of SRp55 in additional species, including porcine.

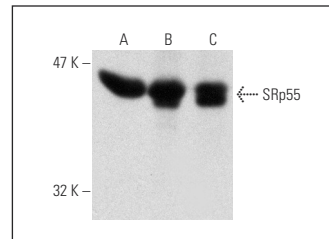
Suitable for use as control antibody for SRp55 siRNA (h): sc-44118, SRp55 siRNA (m): sc-45294, SRp55 shRNA Plasmid (h): sc-44118-SH, SRp55 shRNA Plasmid (m): sc-45294-SH, SRp55 shRNA (h) Lentiviral Particles: sc-44118-V and SRp55 shRNA (m) Lentiviral Particles: sc-45294-V.

Molecular Weight of unphosphorylated SRp55: 40 kDa.

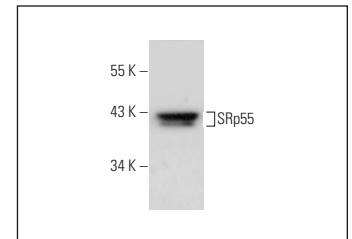
Molecular Weight of phosphorylated SRp55: 55 kDa.

Positive Controls: PC-3 nuclear extract: sc-2152, K-562 nuclear extract: sc-2130 or HeLa nuclear extract: sc-2120.

DATA



SRp55 (G-15): sc-34198. Western blot analysis of SRp55 expression in human PBL (A), rat PBL (B) and mouse PBL (C) whole cell lysates.



SRp55 (G-15): sc-34198. Western blot analysis of SRp55 expression in PC-3 nuclear extract.

STORAGE

Store at 4° C, ****DO NOT FREEZE****. Stable for one year from the date of shipment. Non-hazardous. No MSDS required.

PROTOCOLS

See our web site at www.scbt.com or our catalog for detailed protocols and support products.



Try **SR (1H4): sc-13509** or **SRp55 (C-6): sc-515111**, our highly recommended monoclonal alternatives to SRp55 (G-15). Also, for AC, HRP, FITC, PE, Alexa Fluor® 488 and Alexa Fluor® 647 conjugates, see **SR (1H4): sc-13509**.