

IGFBP5 (P-19): sc-34253

BACKGROUND

The Insulin-like growth factor-binding proteins, or IGFBPs, are a family of homologous proteins that have co-evolved with the IGFs. They serve not only as shuttle molecules for the soluble IGFs, but also confer a level of regulation to the IGF signaling system. Physical association of the IGFBPs with IGF influences the bio-availability of the growth factors, as well as their concentration and distribution in the extracellular environment. In addition, the IGFBPs appear to have biological activity independent of the IGFs. Seven IGFBPs have thus far been described, each differing in their tissue distribution, half-lives and modulation of IGF interactions with their receptors. For instance, IGFBP1 is negatively regulated by Insulin production. The IGFBP1 gene is expressed at a high level during fetal liver development and in response to nutritional changes and diabetes. It has been suggested that IGFBP2 functions as chaperone, escorting IGFs to their target tissues. It is expressed in several human tissues including fetal eye and fetal brain. IGFBP3 is the most abundant IGFBP and is complexed with roughly 80% of the serum IGFs. Both IGFBP3 and IGFBP4 are released by dermal fibroblasts in response to incision injury. IGFBP5 is secreted by myoblasts and may play a key role in muscle differentiation. IGFBP6 differs from other IGFBPs in having the highest affinity for IGF-II. Glycosylated human IGFBP6 is expressed in Chinese hamster ovary (CHO) cells, whereas nonglycosylated recombinant human IGFBP6 is expressed in *E. coli*. IGFBP7 is a secreted protein and binds both IGF-I and IGF-II with a relatively low affinity. It stimulates prostacyclin production and may also function as a growth-suppressing factor.

SOURCE

IGFBP5 (P-19) is an affinity purified goat polyclonal antibody raised against a peptide mapping within an internal region of IGFBP5 of human origin.

PRODUCT

Each vial contains 200 µg IgG in 1.0 ml of PBS with < 0.1% sodium azide and 0.1% gelatin.

Blocking peptide available for competition studies, sc-34253 P, (100 µg peptide in 0.5 ml PBS containing < 0.1% sodium azide and 0.2% BSA).

APPLICATIONS

IGFBP5 (P-19) is recommended for detection of IGFBP5 and, to a lesser extent, IGFBP3 and IGFBP6 of mouse, rat and human origin by Western Blotting (starting dilution 1:200, dilution range 1:100-1:1000), immunoprecipitation [1-2 µg per 100-500 µg of total protein (1 ml of cell lysate)], immunofluorescence (starting dilution 1:50, dilution range 1:50-1:500) and solid phase ELISA (starting dilution 1:30, dilution range 1:30-1:3000).

IGFBP5 (P-19) is also recommended for detection of IGFBP5 and, to a lesser extent, IGFBP3 and IGFBP6 in additional species, including equine, canine, bovine and porcine.

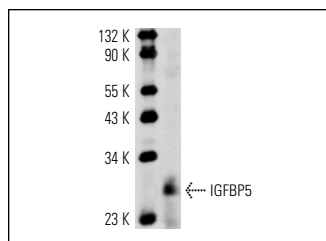
Molecular Weight of IGFBP5: 30 kDa.

Positive Controls: Hep G2 cell lysate: sc-2227, rat adrenal gland extract or mouse embryo tissue extract.

RECOMMENDED SECONDARY REAGENTS

To ensure optimal results, the following support (secondary) reagents are recommended: 1) Western Blotting: use donkey anti-goat IgG-HRP: sc-2020 (dilution range: 1:2000-1:100,000) or Cruz Marker™ compatible donkey anti-goat IgG-HRP: sc-2033 (dilution range: 1:2000-1:5000), Cruz Marker™ Molecular Weight Standards: sc-2035, TBS Blotto A Blocking Reagent: sc-2333 and Western Blotting Luminol Reagent: sc-2048. 2) Immunoprecipitation: use Protein A/G PLUS-Agarose: sc-2003 (0.5 ml agarose/2.0 ml). 3) Immunofluorescence: use donkey anti-goat IgG-FITC: sc-2024 (dilution range: 1:100-1:400) or donkey anti-goat IgG-TR: sc-2783 (dilution range: 1:100-1:400) with UltraCruz™ Mounting Medium: sc-24941.

DATA



IGFBP5 (P-19): sc-34253. Western blot analysis of IGFBP5 expression in mouse embryo tissue extract.

SELECT PRODUCT CITATIONS

1. Rho, S.B., et al. 2008. Insulin-like growth factor-binding protein-5 (IGFBP5) acts as a tumor suppressor by inhibiting angiogenesis. *Carcinogenesis* 29: 2106-2111.

STORAGE

Store at 4° C, **DO NOT FREEZE**. Stable for one year from the date of shipment. Non-hazardous. No MSDS required.

RESEARCH USE

For research use only, not for use in diagnostic procedures.

PROTOCOLS

See our web site at www.scbt.com or our catalog for detailed protocols and support products.

MONOS
Satisfaction
Guaranteed

Try **IGFBP5 (D-6): sc-515116** or **IGFBP5 (G-7): sc-515184**, our highly recommended monoclonal alternatives to IGFBP5 (P-19).