

catalase (K-19): sc-34283

BACKGROUND

Catalase is a peroxisome specific marker protein belonging to the catalase family. Defects in the gene encoding for the catalase protein, CAT, can cause acatalasia, a disease characterized by the absence of catalase activity in red cells and associated with ulcerating oral lesions. Catalase is also an important regulator of oxidative stress and inflammation, and may contribute to the development of rheumatoid arthritis. Catalase, which can form a homotetramer, is found in all nearly all aerobically respiring organisms and functions in protecting cells from the toxic effects of hydrogen peroxide.

REFERENCES

- Rodriguez-Esparragon, F.J., et al. 2003. Peroxisome proliferator-activated receptor- γ 2-Pro12Ala and endothelial nitric oxide synthase-4a/bgene polymorphisms are associated with essential hypertension. *J. Hypertens.* 21: 1649-1655.
- Rosmond, R., et al. 2003. The Pro12Ala PPAR γ 2 gene missense mutation is associated with obesity and Insulin resistance in Swedish middle-aged men. *Diabetes. Metab. Res. Rev.* 19: 159-163.
- El-Sohemy, A., et al. 2005. Catalase and PPAR γ 2 genotype and risk of rheumatoid arthritis in Koreans. *Rheumatol. Int.* 1-5.
- Eny, K.M., et al. 2005. Catalase and PPAR γ 2 genotype and risk of systemic lupus erythematosus in Koreans. *Lupus* 14: 351-355.
- Zhao, X., et al. 2005. 15d-Prostaglandin J₂ activates peroxisome proliferator-activated receptor- γ , promotes expression of catalase, and reduces inflammation, behavioral dysfunction, and neuronal loss after intracerebral hemorrhage. *J. Cereb. Blood Flow Metab.* Epublished ahead of print.
- SWISS-PROT/TrEMBL (P04040). World Wide Web URL: <http://www.expasy.ch/sprot/sprot-top.html>

CHROMOSOMAL LOCATION

Genetic locus: CAT (human) mapping to 11p13; Cat (mouse) mapping to 2 E3.

SOURCE

catalase (K-19) is an affinity purified goat polyclonal antibody raised against a peptide mapping near the C-terminus of catalase of human origin.

PRODUCT

Each vial contains 200 μ g IgG in 1.0 ml of PBS with < 0.1% sodium azide and 0.1% gelatin.

Blocking peptide available for competition studies, sc-34283 P, (100 μ g peptide in 0.5 ml PBS containing < 0.1% sodium azide and 0.2% BSA).

STORAGE

Store at 4° C, ****DO NOT FREEZE****. Stable for one year from the date of shipment. Non-hazardous. No MSDS required.

RESEARCH USE

For research use only, not for use in diagnostic procedures.

APPLICATIONS

catalase (K-19) is recommended for detection of catalase of human, mouse and, to a lesser extent, rat origin by Western Blotting (starting dilution 1:200, dilution range 1:100-1:1000), immunoprecipitation [1-2 μ g per 100-500 μ g of total protein (1 ml of cell lysate)], immunofluorescence (starting dilution 1:50, dilution range 1:50-1:500) and solid phase ELISA (starting dilution 1:30, dilution range 1:30-1:3000).

Suitable for use as control antibody for catalase siRNA (h): sc-45330, catalase siRNA (m): sc-45331, catalase shRNA Plasmid (h): sc-45330-SH, catalase shRNA Plasmid (m): sc-45331-SH, catalase shRNA (h) Lentiviral Particles: sc-45330-V and catalase shRNA (m) Lentiviral Particles: sc-45331-V.

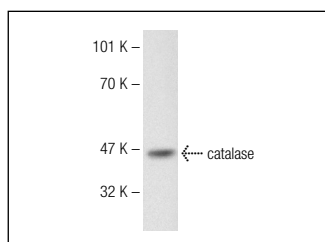
Molecular Weight of catalase: 64 kDa.

Positive Controls: mouse liver extract: sc-2256, HeLa whole cell lysate: sc-2200 or Jurkat whole cell lysate: sc-2204.

RECOMMENDED SECONDARY REAGENTS

To ensure optimal results, the following support (secondary) reagents are recommended: 1) Western Blotting: use donkey anti-goat IgG-HRP: sc-2020 (dilution range: 1:2000-1:100,000) or Cruz Marker™ compatible donkey anti-goat IgG-HRP: sc-2033 (dilution range: 1:2000-1:5000), Cruz Marker™ Molecular Weight Standards: sc-2035, TBS Blotto A Blocking Reagent: sc-2333 and Western Blotting Luminol Reagent: sc-2048. 2) Immunoprecipitation: use Protein A/G PLUS-Agarose: sc-2003 (0.5 ml agarose/2.0 ml). 3) Immunofluorescence: use donkey anti-goat IgG-FITC: sc-2024 (dilution range: 1:100-1:400) or donkey anti-goat IgG-TR: sc-2783 (dilution range: 1:100-1:400) with UltraCruz™ Mounting Medium: sc-24941.

DATA



catalase (K-19): sc-34283. Western blot analysis of catalase expression in mouse liver tissue extract.

PROTOCOLS

See our web site at www.scbt.com or our catalog for detailed protocols and support products.