

NPR-A (G-14): sc-34418

BACKGROUND

The natriuretic peptides are a group of structurally similar peptides that are genetically distinct and play a role in several processes, including cardiovascular, renal and endocrine homeostasis. The atrial natriuretic peptide (ANP) and brain natriuretic peptide (BNP) are derived from myocardial cell origin and are cardiac hormones secreted from the atrium and ventricle of the heart, respectively. The C-type natriuretic peptide (CNP) is derived from endothelial cell origin and acts as an endothelium-derived relaxing factor (EDRF). These peptides mediate their effects through three receptors. NPR-A (also designated GC-A) binds both ANP and BNP, which stimulates 3', 5'-cyclic guanosine monophosphate (cGMP) to mediate natriuresis, vasodilation, renin inhibition, antimitogenesis and lusitropic properties. NPR-B (also designated GC-B) binds CNP and also stimulates cGMP to facilitate vasodilation and growth inhibition. NPR-C, also designated the "clearance" receptor, clears all three peptides, which are subsequently degraded by the ectoenzyme neutral endopeptidase. The natriuretic peptide system plays an important role in hypertension, congestive heart failure, atherosclerosis and renal diseases, and may be a therapeutic target in the treatment of these diseases.

REFERENCES

1. Itoh, H., et al. 1993. Molecular biology and pharmacology of natriuretic peptide system. *Nippon Rinsho* 51: 1548-1556.
2. Itoh, H., et al. 1997. Natriuretic peptide system. *Nippon Rinsho* 55: 1923-1936.
3. Anand-Srivastava, M.B. 1997. Atrial natriuretic peptide-C receptor and membrane signalling in hypertension. *J. Hypertens.* 15: 815-826.

CHROMOSOMAL LOCATION

Genetic locus: NPR1 (human) mapping to 1q21.3; Npr1 (mouse) mapping to 3 F1.

SOURCE

NPR-A (G-14) is an affinity purified goat polyclonal antibody raised against a peptide mapping near the C-terminus of NPR-A of human origin.

PRODUCT

Each vial contains 200 µg IgG in 1.0 ml of PBS with < 0.1% sodium azide and 0.1% gelatin.

Blocking peptide available for competition studies, sc-34418 P, (100 µg peptide in 0.5 ml PBS containing < 0.1% sodium azide and 0.2% BSA).

STORAGE

Store at 4° C, ****DO NOT FREEZE****. Stable for one year from the date of shipment. Non-hazardous. No MSDS required.

PROTOCOLS

See our web site at www.scbt.com or our catalog for detailed protocols and support products.

APPLICATIONS

NPR-A (G-14) is recommended for detection of NPR-A of mouse, rat and human origin by Western Blotting (starting dilution 1:200, dilution range 1:100-1:1000), immunofluorescence (starting dilution 1:50, dilution range 1:50-1:500), immunohistochemistry (including paraffin-embedded sections) (starting dilution 1:50, dilution range 1:50-1:500) and solid phase ELISA (starting dilution 1:30, dilution range 1:30-1:3000).

NPR-A (G-14) is also recommended for detection of NPR-A in additional species, including equine, bovine and porcine.

Suitable for use as control antibody for NPR-A siRNA (h): sc-40125, NPR-A siRNA (m): sc-40126, NPR-A shRNA Plasmid (h): sc-40125-SH, NPR-A shRNA Plasmid (m): sc-40126-SH, NPR-A shRNA (h) Lentiviral Particles: sc-40125-V and NPR-A shRNA (m) Lentiviral Particles: sc-40126-V.

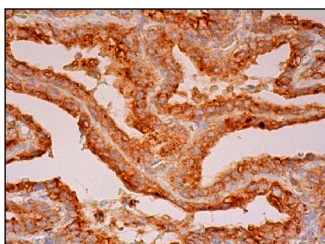
Molecular Weight of NPR-A: 120 kDa.

Positive Controls: KNRK whole cell lysate: sc-2214.

RECOMMENDED SECONDARY REAGENTS

To ensure optimal results, the following support (secondary) reagents are recommended: 1) Western Blotting: use donkey anti-goat IgG-HRP: sc-2020 (dilution range: 1:2000-1:100,000) or Cruz Marker™ compatible donkey anti-goat IgG-HRP: sc-2033 (dilution range: 1:2000-1:5000), Cruz Marker™ Molecular Weight Standards: sc-2035, TBS Blotto A Blocking Reagent: sc-2333 and Western Blotting Luminol Reagent: sc-2048. 2) Immunofluorescence: use donkey anti-goat IgG-FITC: sc-2024 (dilution range: 1:100-1:400) or donkey anti-goat IgG-TR: sc-2783 (dilution range: 1:100-1:400) with UltraCruz™ Mounting Medium: sc-24941. 3) Immunohistochemistry: use ImmunoCruz™: sc-2053 or ABC: sc-2023 goat IgG Staining Systems.

DATA



NPR-A (G-14): sc-34418. Immunoperoxidase staining of formalin fixed, paraffin-embedded human seminal vesicle tissue showing cytoplasmic staining of glandular cells.

RESEARCH USE

For research use only, not for use in diagnostic procedures.



Try **NPR-A (G-2): sc-137041**, our highly recommended monoclonal alternative to NPR-A (G-14).