

# Jagged2 (N-19): sc-34475

## BACKGROUND

The LIN-12/Notch family of transmembrane receptors is believed to play a central role in development by regulating cell fate decisions. Ligands for Notch include Jagged1, Jagged2 and Delta. Jagged is a membrane protein and can activate Notch and prevent myoblast differentiation by inhibiting the expression of muscle regulatory and structural genes. It is involved in mammalian cardiovascular development and in cell-fate decisions during hematopoiesis. Jagged is expressed in adult and fetal tissues. Expression of Jagged is up-regulated in cervical squamous cell carcinoma. Familial Tetralogy of Fallot, the most common form of complex congenital heart disease, is caused by a mutation in the Jagged1 gene.

## REFERENCES

1. Laborda, J., et al. 1993. *dlk*, a putative mammalian homeotic gene differentially expressed in small cell lung carcinomas and neuroendocrine tumor cell line. *J. Biol. Chem.* 268: 3817-3820.
2. Simpson, P. 1994. *The Notch Receptors*. Austin, TX: R.G. Landes Company.

## CHROMOSOMAL LOCATION

Genetic locus: JAG2 (human) mapping to 14q32.33; Jag2 (mouse) mapping to 12 F1.

## SOURCE

Jagged2 (N-19) is an affinity purified goat polyclonal antibody raised against a peptide mapping near the N-terminus of Jagged2 of human origin.

## PRODUCT

Each vial contains 200 µg IgG in 1.0 ml of PBS with < 0.1% sodium azide and 0.1% gelatin.

Blocking peptide available for competition studies, sc-34475 P, (100 µg peptide in 0.5 ml PBS containing < 0.1% sodium azide and 0.2% BSA).

## APPLICATIONS

Jagged2 (N-19) is recommended for detection of Jagged2 of mouse, rat and human origin by Western Blotting (starting dilution 1:200, dilution range 1:100-1:1000), immunoprecipitation [1-2 µg per 100-500 µg of total protein (1 ml of cell lysate)], immunofluorescence (starting dilution 1:50, dilution range 1:50-1:500) and solid phase ELISA (starting dilution 1:30, dilution range 1:30-1:3000).

Jagged2 (N-19) is also recommended for detection of Jagged2 in additional species, including canine and porcine.

Suitable for use as control antibody for Jagged2 siRNA (h): sc-39672, Jagged2 siRNA (m): sc-39673, Jagged2 shRNA Plasmid (h): sc-39672-SH, Jagged2 shRNA Plasmid (m): sc-39673-SH, Jagged2 shRNA (h) Lentiviral Particles: sc-39672-V and Jagged2 shRNA (m) Lentiviral Particles: sc-39673-V.

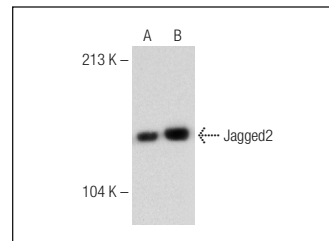
Molecular Weight of Jagged2: 150 kDa.

Positive Controls: J774.A1 cell lysate: sc-3802, RAW 264.7 whole cell lysate: sc-2211 or mouse placenta extract: sc-364247.

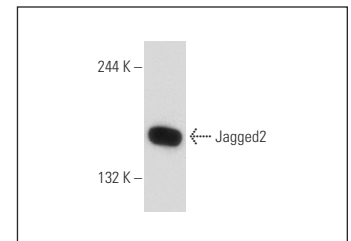
## RECOMMENDED SECONDARY REAGENTS

To ensure optimal results, the following support (secondary) reagents are recommended: 1) Western Blotting: use donkey anti-goat IgG-HRP: sc-2020 (dilution range: 1:2000-1:100,000) or Cruz Marker™ compatible donkey anti-goat IgG-HRP: sc-2033 (dilution range: 1:2000-1:5000), Cruz Marker™ Molecular Weight Standards: sc-2035, TBS Blotto A Blocking Reagent: sc-2333 and Western Blotting Luminol Reagent: sc-2048. 2) Immunoprecipitation: use Protein A/G PLUS-Agarose: sc-2003 (0.5 ml agarose/2.0 ml). 3) Immunofluorescence: use donkey anti-goat IgG-FITC: sc-2024 (dilution range: 1:100-1:400) or donkey anti-goat IgG-TR: sc-2783 (dilution range: 1:100-1:400) with UltraCruz™ Mounting Medium: sc-24941.

## DATA



Jagged2 (N-19): sc-34475. Western blot analysis of Jagged2 expression in J774.A1 (A) and RAW 264.7 (B) whole cell lysates.



Jagged2 (N-19): sc-34475. Western blot analysis of Jagged2 expression in mouse placenta tissue extract.

## STORAGE

Store at 4° C, \*\*DO NOT FREEZE\*\*. Stable for one year from the date of shipment. Non-hazardous. No MSDS required.

## RESEARCH USE

For research use only, not for use in diagnostic procedures.

## PROTOCOLS

See our web site at [www.scbt.com](http://www.scbt.com) or our catalog for detailed protocols and support products.


 MONOS  
Satisfaction  
Guaranteed

Try **Jagged2 (4F10): sc-293433**, our highly recommended monoclonal alternative to Jagged2 (N-19).