

CGRP-RCP (K-16): sc-34588

BACKGROUND

Calcitonin is a 32-amino acid hormone that preserves skeletal integrity by inhibiting osteoclast formation and bone resorption. The secretion of calcitonin from the thyroid is regulated in part by estrogen, which increases calcitonin mRNA levels. The calcitonin gene undergoes alternative splicing, resulting in the production of several related products. One such product is calcitonin gene-related peptide (CGRP), which is expressed in neuronal cells. CGRP immunoreactive neurons innervate the uterus. Specifically, CGRP inhibits spontaneous and evoked contractions in the uterus and fallopian tubes. The CGRP-receptor complement protein (CGRP-RCP) is an accessory protein that is expressed in CGRP responsive tissues. CGRP-RCP is associated with the acrosome, thereby playing a role in reproduction. Specifically, CGRP-RCP couples the CGRP receptor to downstream effectors.

CHROMOSOMAL LOCATION

Genetic locus: RCP9 (human) mapping to 7q11.21; Crp (mouse) mapping to 5 G1.3.

SOURCE

CGRP-RCP (K-16) is an affinity purified goat polyclonal antibody raised against a peptide mapping at the N-terminus of CGRP-RCP of human origin.

PRODUCT

Each vial contains 200 µg IgG in 1.0 ml of PBS with < 0.1% sodium azide and 0.1% gelatin.

Blocking peptide available for competition studies, sc-34588 P, (100 µg peptide in 0.5 ml PBS containing < 0.1% sodium azide and 0.2% BSA).

RESEARCH USE

For research use only, not for use in diagnostic procedures.

APPLICATIONS

CGRP-RCP (K-16) is recommended for detection of CGRP-RCP of mouse, rat and human origin by Western Blotting (starting dilution 1:200, dilution range 1:100-1:1000), immunoprecipitation [1-2 µg per 100-500 µg of total protein (1 ml of cell lysate)], immunofluorescence (starting dilution 1:50, dilution range 1:50-1:500) and solid phase ELISA (starting dilution 1:30, dilution range 1:30-1:3000).

CGRP-RCP (K-16) is also recommended for detection of CGRP-RCP in additional species, including equine, canine, bovine and porcine.

Suitable for use as control antibody for CGRP-RCP siRNA (h): sc-45539, CGRP-RCP siRNA (m): sc-45540, CGRP-RCP shRNA Plasmid (h): sc-45539-SH, CGRP-RCP shRNA Plasmid (m): sc-45540-SH, CGRP-RCP shRNA (h) Lentiviral Particles: sc-45539-V and CGRP-RCP shRNA (m) Lentiviral Particles: sc-45540-V.

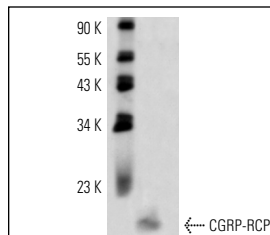
Molecular Weight of CGRP-RCP: 19 kDa.

Positive Controls: rat epididymus tissue extract.

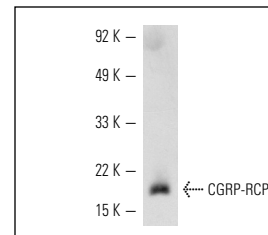
RECOMMENDED SECONDARY REAGENTS

To ensure optimal results, the following support (secondary) reagents are recommended: 1) Western Blotting: use donkey anti-goat IgG-HRP: sc-2020 (dilution range: 1:2000-1:100,000) or Cruz Marker™ compatible donkey anti-goat IgG-HRP: sc-2033 (dilution range: 1:2000-1:5000), Cruz Marker™ Molecular Weight Standards: sc-2035, TBS Blotto A Blocking Reagent: sc-2333 and Western Blotting Luminol Reagent: sc-2048. 2) Immunoprecipitation: use Protein A/G PLUS-Agarose: sc-2003 (0.5 ml agarose/2.0 ml). 3) Immunofluorescence: use donkey anti-goat IgG-FITC: sc-2024 (dilution range: 1:100-1:400) or donkey anti-goat IgG-TR: sc-2783 (dilution range: 1:100-1:400) with UltraCruz™ Mounting Medium: sc-24941.

DATA



CGRP-RCP (K-16): sc-34588. Western blot analysis of CGRP-RCP expression in rat epididymus tissue extract.



CGRP-RCP (K-16): sc-34588. Western blot analysis of CGRP-RCP expression in rat epididymus tissue extract.

STORAGE

Store at 4° C, ****DO NOT FREEZE****. Stable for one year from the date of shipment. Non-hazardous. No MSDS required.

PROTOCOLS

See our web site at www.scbt.com or our catalog for detailed protocols and support products.

MONOS
Satisfaction
Guaranteed

Try **CGRP-RCP (D-1): sc-393347**, our highly recommended monoclonal alternative to CGRP-RCP (K-16).