

Exportin 5 (E-16): sc-34619

BACKGROUND

The karyopherin-related nuclear transport factor Exportin 5, also known as Exp5, preferentially recognizes and transports RNAs containing minihelix motifs, structural *cis*-acting export elements that comprise a double-stranded stem (14 nucleotides) with a base-paired 5' end and a 3-8-nucleotide protruding 3' end. Exportin 5 also mediates protein transport between the nuclear and cytoplasmic compartment. Exportin 5 belongs to a large family of karyopherins and stimulates nuclear export of dsRNA binding proteins eEF1A and tRNA.

REFERENCES

1. Bohnsack, M.T., et al. 2002. Exp5 exports eEF1A via tRNA from nuclei and synergizes with other transport pathways to confine translation to the cytoplasm. *EMBO J.* 21: 6205-6215.
2. Brownawell, A.M. and Macara, I.G. 2002. Exportin 5, a novel karyopherin, mediates nuclear export of double-stranded RNA binding proteins. *J. Cell Biol.* 156: 53-64.

CHROMOSOMAL LOCATION

Genetic locus: XPO5 (human) mapping to 6p21.1; Xpo5 (mouse) mapping to 17 C.

SOURCE

Exportin 5 (E-16) is an affinity purified goat polyclonal antibody raised against a peptide mapping near the C-terminus of Exportin 5 of human origin.

PRODUCT

Each vial contains 200 µg IgG in 1.0 ml of PBS with < 0.1% sodium azide and 0.1% gelatin.

Blocking peptide available for competition studies, sc-34619 P, (100 µg peptide in 0.5 ml PBS containing < 0.1% sodium azide and 0.2% BSA).

APPLICATIONS

Exportin 5 (E-16) is recommended for detection of Exportin 5 of mouse, rat and human origin by Western Blotting (starting dilution 1:200, dilution range 1:100-1:1000), immunoprecipitation [1-2 µg per 100-500 µg of total protein (1 ml of cell lysate)], immunofluorescence (starting dilution 1:50, dilution range 1:50-1:500) and solid phase ELISA (starting dilution 1:30, dilution range 1:30-1:3000).

Exportin 5 (E-16) is also recommended for detection of Exportin 5 in additional species, including equine, canine, bovine and porcine.

Suitable for use as control antibody for Exportin 5 siRNA (h): sc-45569, Exportin 5 siRNA (m): sc-45570, Exportin 5 shRNA Plasmid (h): sc-45569-SH, Exportin 5 shRNA Plasmid (m): sc-45570-SH, Exportin 5 shRNA (h) Lentiviral Particles: sc-45569-V and Exportin 5 shRNA (m) Lentiviral Particles: sc-45570-V.

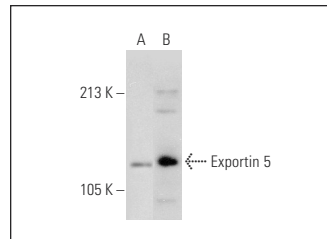
Molecular Weight of Exportin 5: 136 kDa.

Positive Controls: Ramos cell lysate: sc-2216 or U-251-MG whole cell lysate: sc-364176.

RECOMMENDED SECONDARY REAGENTS

To ensure optimal results, the following support (secondary) reagents are recommended: 1) Western Blotting: use donkey anti-goat IgG-HRP: sc-2020 (dilution range: 1:2000-1:100,000) or Cruz Marker™ compatible donkey anti-goat IgG-HRP: sc-2033 (dilution range: 1:2000-1:5000), Cruz Marker™ Molecular Weight Standards: sc-2035, TBS Blotto A Blocking Reagent: sc-2333 and Western Blotting Luminol Reagent: sc-2048. 2) Immunoprecipitation: use Protein A/G PLUS-Agarose: sc-2003 (0.5 ml agarose/2.0 ml). 3) Immunofluorescence: use donkey anti-goat IgG-FITC: sc-2024 (dilution range: 1:100-1:400) or donkey anti-goat IgG-TR: sc-2783 (dilution range: 1:100-1:400) with UltraCruz™ Mounting Medium: sc-24941.

DATA



Exportin 5 (E-16): sc-34619. Western blot analysis of Exportin 5 expression in U-251-MG (A) and Ramos (B) whole cell lysates.

STORAGE

Store at 4° C, ****DO NOT FREEZE****. Stable for one year from the date of shipment. Non-hazardous. No MSDS required.

RESEARCH USE

For research use only, not for use in diagnostic procedures.

PROTOCOLS

See our web site at www.scbt.com or our catalog for detailed protocols and support products.


 MONOS
Satisfaction
Guaranteed

Try **Exportin 5 (A-11): sc-271036** or **Exportin 5 (A-4): sc-166789**, our highly recommended monoclonal alternatives to Exportin 5 (E-16).