

Ig J chain (S-16): sc-34654

BACKGROUND

The regions of relatively constant sequence beyond the variable regions of immunoglobulin are termed constant regions (C regions) and are present in both the heavy and light chains. With few exceptions, the sites of attachment for carbohydrates to immunoglobulin are located in the constant region. The constant regions also serve to hold the variable regions on both heavy and light chain together by virtue of the disulfide bond between them. The immunoglobulin J chain (Ig J chain) is a linker protein for two monomer units of either immunoglobulin α (IgA) or μ (IgM) polypeptides. For IgA the J chain-dimer induces larger polymers whereas for the IgM pentamer it functions as a nucleating unit. The Ig J chain is also important in binding these immunoglobulins to secretory components.

REFERENCES

1. Yagi, M., et al. 1982. J chain is encoded by a single gene unlinked to other immunoglobulin structural genes. *J. Exp. Med.* 155: 647-654.
2. Cann, G.M., et al. 1982. Primary structure of the immunoglobulin J chain from the mouse. *Proc. Natl. Acad. Sci. USA* 79: 6656-6660.

CHROMOSOMAL LOCATION

Genetic locus: IGJ (human) mapping to 4q13.3; Igj (mouse) mapping to 5 E1.

SOURCE

Ig J chain (S-16) is an affinity purified goat polyclonal antibody raised against a peptide mapping near the N-terminus of Ig J chain of human origin.

PRODUCT

Each vial contains 200 μ g IgG in 1.0 ml of PBS with < 0.1% sodium azide and 0.1% gelatin.

Blocking peptide available for competition studies, sc-34654 P, (100 μ g peptide in 0.5 ml PBS containing < 0.1% sodium azide and 0.2% BSA).

APPLICATIONS

Ig J chain (S-16) is recommended for detection of Ig J chain of mouse, rat and human origin by Western Blotting (starting dilution 1:200, dilution range 1:100-1:1000), immunoprecipitation [1-2 μ g per 100-500 μ g of total protein (1 ml of cell lysate)], immunofluorescence (starting dilution 1:50, dilution range 1:50-1:500), immunohistochemistry (including paraffin-embedded sections) (starting dilution 1:50, dilution range 1:50-1:500) and solid phase ELISA (starting dilution 1:30, dilution range 1:30-1:3000).

Suitable for use as control antibody for Ig J chain siRNA (h): sc-45773, Ig J chain siRNA (m): sc-45774, Ig J chain shRNA Plasmid (h): sc-45773-SH, Ig J chain shRNA Plasmid (m): sc-45774-SH, Ig J chain shRNA (h) Lentiviral Particles: sc-45773-V and Ig J chain shRNA (m) Lentiviral Particles: sc-45774-V.

Molecular Weight (predicted) of Ig J chain: 18 kDa.

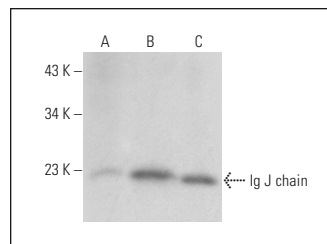
Molecular Weight (observed) of Ig J chain: 18-26 kDa.

Positive Controls: Ig J Chain (m): 293T Lysate: sc-120964, Jurkat whole cell lysate: sc-2204 or mouse liver extract: sc-2256.

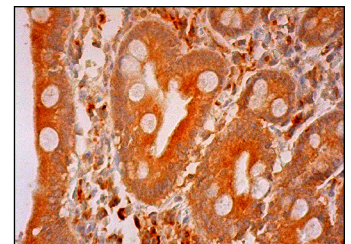
RECOMMENDED SECONDARY REAGENTS

To ensure optimal results, the following support (secondary) reagents are recommended: 1) Western Blotting: use donkey anti-goat IgG-HRP: sc-2020 (dilution range: 1:2000-1:100,000) or Cruz Marker™ compatible donkey anti-goat IgG-HRP: sc-2033 (dilution range: 1:2000-1:5000), Cruz Marker™ Molecular Weight Standards: sc-2035, TBS Blotto A Blocking Reagent: sc-2333 and Western Blotting Luminol Reagent: sc-2048. 2) Immunoprecipitation: use Protein A/G PLUS-Agarose: sc-2003 (0.5 ml agarose/2.0 ml). 3) Immunofluorescence: use donkey anti-goat IgG-FITC: sc-2024 (dilution range: 1:100-1:400) or donkey anti-goat IgG-TR: sc-2783 (dilution range: 1:100-1:400) with UltraCruz™ Mounting Medium: sc-24941. 4) Immunohistochemistry: use ImmunoCruz™: sc-2053 or ABC: sc-2023 goat IgG Staining Systems.

DATA



Ig J chain (S-16): sc-34654. Western blot analysis of Ig J chain expression in non-transfected 293T: sc-117752 (A), mouse Ig J Chain transfected 293T: sc-120964 (B) and Jurkat (C) whole cell lysates.



Ig J chain (S-16): sc-34654. Immunoperoxidase staining of formalin fixed, paraffin-embedded human duodenum tissue showing cytoplasmic staining of glandular cells and interstitial cells.

RESEARCH USE

For research use only, not for use in diagnostic procedures.

STORAGE

Store at 4° C, **DO NOT FREEZE**. Stable for one year from the date of shipment. Non-hazardous. No MSDS required.

PROTOCOLS

See our web site at www.scbt.com or our catalog for detailed protocols and support products.

MONOS
Satisfaction
Guaranteed

Try **Ig J chain (B-6): sc-271967** or **Ig J chain (F-12): sc-133177**, our highly recommended monoclonal alternatives to Ig J chain (S-16).