

GCAP2 (M-18): sc-34904

BACKGROUND

The intracellular stimulation of guanylate cyclase (GC) by calcium, a key event in the recovery of the dark state of rod photoreceptors after exposure to light, is mediated by guanylate cyclase-activating protein (GCAP1). GCAPs are 23 kDa calcium-binding proteins belonging to the calmodulin superfamily. GCAP1 is a calcium-binding protein that stimulates synthesis of cGMP in photoreceptors. GCAP1 is present in rod and cone photoreceptor outer segments where phototransduction occurs. In contrast to other calcium-binding proteins from the calmodulin superfamily, the calcium-free form of GCAP1 stimulates the effector enzyme. By molecular cloning of human and mouse GCAP cDNA, the known mammalian GCAPs are found to be more than 90% similar, consisting of 201 to 205 amino acids, and containing three identically conserved calcium-binding sites. The gene which encodes GCAP1 maps to human chromosome 6p21.1.

REFERENCES

1. Subbaraya, I., et al. 1994. Molecular characterization of human and mouse photoreceptor guanylate cyclase-activating protein (GCAP) and chromosomal localization of the human gene. *J. Biol. Chem.* 269: 31080-31089.
2. Gorczyca, W.A., et al. 1995. Guanylyl cyclase activating protein. A calcium-sensitive regulator of phototransduction. *J. Biol. Chem.* 270: 22029-22036.
3. Otto-Bruc, A., et al. 1997. Localization of guanylate cyclase-activating protein 2 in mammalian retinas. *Proc. Natl. Acad. Sci. USA* 94: 4727-4732.
4. Rudnicka-Nawrot, M., et al. 1998. Changes in biological activity and folding of guanylate cyclase-activating protein 1 as a function of calcium. *Biochemistry* 37: 248-257.
5. Sokal, I., et al. 1999. Conformational changes in guanylyl cyclase-activating protein 1 (GCAP1) and its tryptophan mutants as a function of calcium concentration. *J. Biol. Chem.* 274: 19829-19837.
6. LocusLink Report (LocusID: 600364). <http://www.ncbi.nlm.nih.gov/LocusLink>

CHROMOSOMAL LOCATION

Genetic locus: GUCA1B (human) mapping to 6p21.1; Guca1b (mouse) mapping to 17 C.

SOURCE

GCAP2 (M-18) is an affinity purified goat polyclonal antibody raised against a peptide mapping at the C-terminus of GCAP2 of mouse origin.

PRODUCT

Each vial contains 200 µg IgG in 1.0 ml of PBS with < 0.1% sodium azide and 0.1% gelatin.

Blocking peptide available for competition studies, sc-34904 P, (100 µg peptide in 0.5 ml PBS containing < 0.1% sodium azide and 0.2% BSA).

STORAGE

Store at 4° C, ****DO NOT FREEZE****. Stable for one year from the date of shipment. Non-hazardous. No MSDS required.

APPLICATIONS

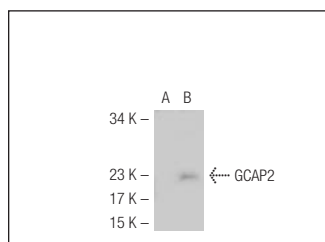
GCAP2 (M-18) is recommended for detection of GCAP2 of mouse and rat origin by Western Blotting (starting dilution 1:200, dilution range 1:100-1:1000), immunoprecipitation [1-2 µg per 100-500 µg of total protein (1 ml of cell lysate)], immunofluorescence (starting dilution 1:50, dilution range 1:50-1:500) and solid phase ELISA (starting dilution 1:30, dilution range 1:30-1:3000).

Suitable for use as control antibody for GCAP2 siRNA (m): sc-45534, GCAP2 shRNA Plasmid (m): sc-45534-SH and GCAP2 shRNA (m) Lentiviral Particles: sc-45534-V.

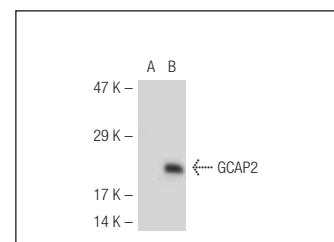
RECOMMENDED SECONDARY REAGENTS

To ensure optimal results, the following support (secondary) reagents are recommended: 1) Western Blotting: use donkey anti-goat IgG-HRP: sc-2020 (dilution range: 1:2000-1:100,000) or Cruz Marker™ compatible donkey anti-goat IgG-HRP: sc-2033 (dilution range: 1:2000-1:5000), Cruz Marker™ Molecular Weight Standards: sc-2035, TBS Blotto A Blocking Reagent: sc-2333 and Western Blotting Luminol Reagent: sc-2048. 2) Immunoprecipitation: use Protein A/G PLUS-Agarose: sc-2003 (0.5 ml agarose/2.0 ml). 3) Immunofluorescence: use donkey anti-goat IgG-FITC: sc-2024 (dilution range: 1:100-1:400) or donkey anti-goat IgG-TR: sc-2783 (dilution range: 1:100-1:400) with UltraCruz™ Mounting Medium: sc-24941.

DATA



GCAP2 (M-18): sc-34904. Western blot analysis of GCAP2 expression in non-transfected: sc-117752 (A) and mouse GCAP2 transfected: sc-120442 (B) 293T whole cell lysates.



GCAP2 (M-18): sc-34904. Western blot analysis of GCAP2 expression in non-transfected: sc-117752 (A) and mouse GCAP2 transfected: sc-120436 (B) 293T whole cell lysates.

RESEARCH USE

For research use only, not for use in diagnostic procedures.

PROTOCOLS

See our web site at www.scbt.com or our catalog for detailed protocols and support products.