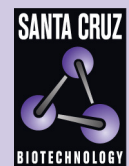


# GCAP2 (V-12): sc-34905



The Power to Question

## BACKGROUND

The intracellular stimulation of guanylate cyclase (GC) by calcium, a key event in the recovery of the dark state of rod photoreceptors after exposure to light, is mediated by guanylate cyclase-activating protein (GCAP1). GCAPs are calcium-binding proteins belonging to the calmodulin superfamily. GCAP1 is a calcium-binding protein that stimulates synthesis of cGMP in photoreceptors. GCAP1 is present in rod and cone photoreceptor outer segments where phototransduction occurs. In contrast to other calcium-binding proteins from the calmodulin superfamily, the calcium-free form of GCAP1 stimulates the effector enzyme. By molecular cloning of human and mouse GCAP cDNA, the known mammalian GCAPs are found to be more than 90% similar, consisting of 201 to 205 amino acids and containing 3 identically conserved calcium-binding sites. A related protein, GCAP2, is detectable only in the retina and results from a gene duplication event. The genes which encode GCAP1 and GCAP2 map to human chromosome 6p21.1.

## REFERENCES

1. Subbaraya, I., et al. 1994. Molecular characterization of human and mouse photoreceptor guanylate cyclase-activating protein (GCAP) and chromosomal localization of the human gene. *J. Biol. Chem.* 269: 31080-31089.
2. Gorczyca, W.A., et al. 1995. Guanylyl cyclase activating protein. A calcium-sensitive regulator of phototransduction. *J. Biol. Chem.* 270: 22029-22036.
3. Otto-Bruc, A., et al. 1997. Localization of guanylate cyclase-activating protein 2 in mammalian retinas. *Proc. Natl. Acad. Sci. USA* 94: 4727-4732.
4. Surguchov, A., et al. 1997. The human GCAP1 and GCAP2 genes are arranged in a tail-to-tail array on the short arm of chromosome 6 (p21.1). *Genomics* 39: 312-322.
5. Rudnicka-Nawrot, M., et al. 1998. Changes in biological activity and folding of guanylate cyclase-activating protein 1 as a function of calcium. *Biochemistry* 37: 248-257.
6. Sokal, I., et al. 1999. Conformational changes in guanylyl cyclase-activating protein 1 (GCAP1) and its tryptophan mutants as a function of calcium concentration. *J. Biol. Chem.* 274: 19829-19837.
7. LocusLink Report (LocusID: 600364). <http://www.ncbi.nlm.nih.gov/LocusLink>

## CHROMOSOMAL LOCATION

Genetic locus: GUCA1B (human) mapping to 6p21.1; Guca1b (mouse) mapping to 17 C.

## SOURCE

GCAP2 (V-12) is an affinity purified goat polyclonal antibody raised against a peptide mapping near the C-terminus of GCAP2 of mouse origin.

## PRODUCT

Each vial contains 200 µg IgG in 1.0 ml of PBS with < 0.1% sodium azide and 0.1% gelatin.

Blocking peptide available for competition studies, sc-34905 P, (100 µg peptide in 0.5 ml PBS containing < 0.1% sodium azide and 0.2% BSA).

## APPLICATIONS

GCAP2 (V-12) is recommended for detection of GCAP2 of mouse, rat and human origin by Western Blotting (starting dilution 1:200, dilution range 1:100-1:1000), immunoprecipitation [1-2 µg per 100-500 µg of total protein (1 ml of cell lysate)], immunofluorescence (starting dilution 1:50, dilution range 1:50-1:500) and solid phase ELISA (starting dilution 1:30, dilution range 1:30-1:3000).

Suitable for use as control antibody for GCAP2 siRNA (h): sc-40630, GCAP2 siRNA (m): sc-45534, GCAP2 shRNA Plasmid (h): sc-40630-SH, GCAP2 shRNA Plasmid (m): sc-45534-SH, GCAP2 shRNA (h) Lentiviral Particles: sc-40630-V and GCAP2 shRNA (m) Lentiviral Particles: sc-45534-V.

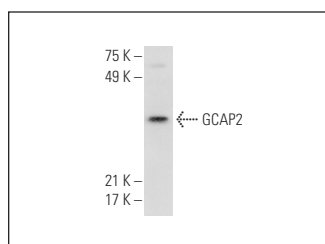
Molecular Weight of GCAP2: 23 kDa.

Positive Controls: Y79 cell lysate: sc-2240, GCAP2 (m): 293T Lysate: sc-120436 or A549 cell lysate: sc-2413.

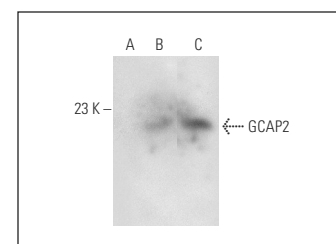
## RECOMMENDED SECONDARY REAGENTS

To ensure optimal results, the following support (secondary) reagents are recommended: 1) Western Blotting: use donkey anti-goat IgG-HRP: sc-2020 (dilution range: 1:2000-1:100,000) or Cruz Marker™ compatible donkey anti-goat IgG-HRP: sc-2033 (dilution range: 1:2000-1:5000), Cruz Marker™ Molecular Weight Standards: sc-2035, TBS Blotto A Blocking Reagent: sc-2333 and Western Blotting Luminol Reagent: sc-2048. 2) Immunoprecipitation: use Protein A/G PLUS-Agarose: sc-2003 (0.5 ml agarose/2.0 ml). 3) Immunofluorescence: use donkey anti-goat IgG-FITC: sc-2024 (dilution range: 1:100-1:400) or donkey anti-goat IgG-TR: sc-2783 (dilution range: 1:100-1:400) with UltraCruz™ Mounting Medium: sc-24941.

## DATA



GCAP2 (V-12): sc-34905. Western blot analysis of GCAP2 expression in Y79 whole cell lysate.



GCAP2 (V-12): sc-34905. Western blot analysis of GCAP2 expression in non-transfected 293T: sc-117752 (A), mouse GCAP2 transfected 293T: sc-120436 (B) and A549 (C) whole cell lysates.

## STORAGE

Store at 4° C, **\*\*DO NOT FREEZE\*\***. Stable for one year from the date of shipment. Non-hazardous. No MSDS required.

## RESEARCH USE

For research use only, not for use in diagnostic procedures.