

# Synaptogyrin-2 (G-13): sc-34963

## BACKGROUND

The Synaptogyrin family of proteins are integral membrane proteins containing four transmembrane regions. Synaptogyrins are tyrosine-phosphorylated proteins with two neuronal (Synaptogyrins-1 and -3) and one ubiquitous (Synaptogyrin-2) isoform. Synaptophysin and Synaptogyrin represent the major constituents of synaptic vesicles. Synaptogyrin-1 is associated with presynaptic vesicles in neuronal cells. Synaptogyrin-2, also known as Cellugyrin, has a tyrosine phosphorylated C-terminal cytoplasmic tail and is involved in the regulation of membrane traffic in non-neuronal cells. Synaptogyrin-3 is expressed mainly in brain and placenta.

## REFERENCES

1. Belfort, G.M., et al. 2003. Cellugyrin and synaptogyrin facilitate targeting of synaptophysin to a ubiquitous synaptic vesicle-sized compartment in PC12 cells. *J. Biol. Chem.* 278: 47971-47978.
2. Belizaire, R., et al. 2004. Characterization of synaptogyrin-3 as a new synaptic vesicle protein. *J. Comp. Neurol.* 470: 266-281.
3. Hitchcock, I.S., et al. 2004. Essential components for a glutamatergic synapse between Merkel cell and nerve terminal in rats. *Neurosci. Lett.* 362: 196-199.
4. Masliah, E., et al. 2004. Patterns of gene dysregulation in the frontal cortex of patients with HIV encephalitis. *J. Neuroimmunol.* 157: 163-175.
5. Belfort, G.M., et al. 2005. Cellugyrin induces biogenesis of synaptic-like microvesicles in PC12 cells. *J. Biol. Chem.* 280: 7262-7272.
6. Witkovsky, P., et al. 2005. Rat retinal dopaminergic neurons: differential maturation of somatodendritic and axonal compartments. *J. Comp. Neurol.* 481: 352-362.

## CHROMOSOMAL LOCATION

Genetic locus: SYNGR2 (human) mapping to 17q25.3.

## SOURCE

Synaptogyrin-2 (G-13) is an affinity purified goat polyclonal antibody raised against a peptide mapping near the N-terminus of Synaptogyrin-2 of human origin.

## PRODUCT

Each vial contains 200 µg IgG in 1.0 ml of PBS with < 0.1% sodium azide and 0.1% gelatin.

Blocking peptide available for competition studies, sc-34963 P, (100 µg peptide in 0.5 ml PBS containing < 0.1% sodium azide and 0.2% BSA).

## STORAGE

Store at 4° C, **\*\*DO NOT FREEZE\*\***. Stable for one year from the date of shipment. Non-hazardous. No MSDS required.

## PROTOCOLS

See our web site at [www.scbt.com](http://www.scbt.com) or our catalog for detailed protocols and support products.

## APPLICATIONS

Synaptogyrin-2 (G-13) is recommended for detection of Synaptogyrin-2 of human origin by Western Blotting (starting dilution 1:200, dilution range 1:100-1:1000), immunoprecipitation [1-2 µg per 100-500 µg of total protein (1 ml of cell lysate)], immunofluorescence (starting dilution 1:50, dilution range 1:50-1:500), immunohistochemistry (including paraffin-embedded sections) (starting dilution 1:50, dilution range 1:50-1:500) and solid phase ELISA (starting dilution 1:30, dilution range 1:30-1:3000).

Suitable for use as control antibody for Synaptogyrin-2 siRNA (h): sc-45553, Synaptogyrin-2 shRNA Plasmid (h): sc-45553-SH and Synaptogyrin-2 shRNA (h) Lentiviral Particles: sc-45553-V.

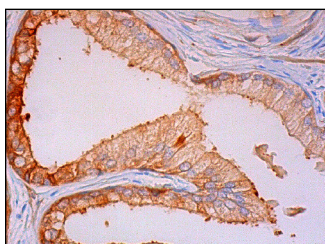
Molecular Weight of Synaptogyrin-2: 25 kDa.

Positive Controls: Jurkat whole cell lysate: sc-2204.

## RECOMMENDED SECONDARY REAGENTS

To ensure optimal results, the following support (secondary) reagents are recommended: 1) Western Blotting: use donkey anti-goat IgG-HRP: sc-2020 (dilution range: 1:2000-1:100,000) or Cruz Marker™ compatible donkey anti-goat IgG-HRP: sc-2033 (dilution range: 1:2000-1:5000), Cruz Marker™ Molecular Weight Standards: sc-2035, TBS Blotto A Blocking Reagent: sc-2333 and Western Blotting Luminol Reagent: sc-2048. 2) Immunoprecipitation: use Protein A/G PLUS-Agarose: sc-2003 (0.5 ml agarose/2.0 ml). 3) Immunofluorescence: use donkey anti-goat IgG-FITC: sc-2024 (dilution range: 1:100-1:400) or donkey anti-goat IgG-TR: sc-2783 (dilution range: 1:100-1:400) with UltraCruz™ Mounting Medium: sc-24941. 4) Immunohistochemistry: use ImmunoCruz™: sc-2053 or ABC: sc-2023 goat IgG Staining Systems.

## DATA



Synaptogyrin-2 (G-13): sc-34963. Immunoperoxidase staining of formalin fixed, paraffin-embedded human prostate tissue showing cytoplasmic and membrane staining of glandular cells.

## RESEARCH USE

For research use only, not for use in diagnostic procedures.