

TRIP6 (N-20): sc-34979

BACKGROUND

Zyxin is a LIM domain-containing, zinc finger domain-containing, SH3 ligand-containing phosphoprotein that localizes to focal adhesion plaques and actin filament bundles. TRIP6 is a Zyxin-related protein. Thyroid receptor interacting protein 6 (TRIP6) interacts with the ligand binding domain of the thyroid receptor, and is predominantly expressed in kidney, liver and lung. TRIP6 interacts with receptor-interacting protein 2 (RIP2) through LIM domains in a TNF- or IL-1-dependent manner. TRIP6 also interacts with TRAF2, a protein that is crucially involved in TNF signaling, as well as the IL-1 receptor, TLR2 and Nod1. Over-expression of TRIP6 facilitates NFκB activation by TNF, IL-1, TLR2 or Nod1, whereas a dominant negative mutant or RNA-interference construct of TRIP6 inhibits NFκB activation by TNF, IL-1, TLR2 or Nod1. Moreover, TRIP6 also potentiates RIP2- and Nod1-mediated ERK activation.

CHROMOSOMAL LOCATION

Genetic locus: TRIP6 (human) mapping to 7q22.1; Trip6 (mouse) mapping to 5 G2.

SOURCE

TRIP6 (N-20) is an affinity purified goat polyclonal antibody raised against a peptide mapping near the N-terminus of TRIP6 of human origin.

PRODUCT

Each vial contains 200 µg IgG in 1.0 ml of PBS with < 0.1% sodium azide and 0.1% gelatin.

Blocking peptide available for competition studies, sc-34979 P, (100 µg peptide in 0.5 ml PBS containing < 0.1% sodium azide and 0.2% BSA).

STORAGE

Store at 4° C, ****DO NOT FREEZE****. Stable for one year from the date of shipment. Non-hazardous. No MSDS required.

APPLICATIONS

TRIP6 (N-20) is recommended for detection of TRIP6 of mouse, rat and human origin by Western Blotting (starting dilution 1:200, dilution range 1:100-1:1000), immunoprecipitation [1-2 µg per 100-500 µg of total protein (1 ml of cell lysate)], immunofluorescence (starting dilution 1:50, dilution range 1:50-1:500) and solid phase ELISA (starting dilution 1:30, dilution range 1:30-1:3000).

TRIP6 (N-20) is also recommended for detection of TRIP6 in additional species, including canine, bovine and porcine.

Suitable for use as control antibody for TRIP6 siRNA (h): sc-45561, TRIP6 siRNA (m): sc-45562, TRIP6 shRNA Plasmid (h): sc-45561-SH, TRIP6 shRNA Plasmid (m): sc-45562-SH, TRIP6 shRNA (h) Lentiviral Particles: sc-45561-V and TRIP6 shRNA (m) Lentiviral Particles: sc-45562-V.

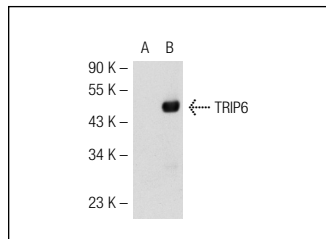
Molecular Weight of 50 kDa.

Positive Controls: TRIP6 (h): 293T Lysate: sc-114028, K-562 whole cell lysate: sc-2203 or K-562 nuclear extract: sc-2130.

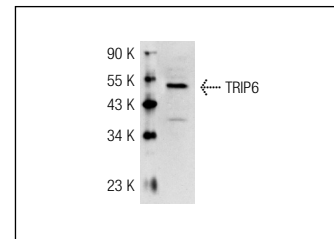
RECOMMENDED SECONDARY REAGENTS

To ensure optimal results, the following support (secondary) reagents are recommended: 1) Western Blotting: use donkey anti-goat IgG-HRP: sc-2020 (dilution range: 1:2000-1:100,000) or Cruz Marker™ compatible donkey anti-goat IgG-HRP: sc-2033 (dilution range: 1:2000-1:5000), Cruz Marker™ Molecular Weight Standards: sc-2035, TBS Blotto A Blocking Reagent: sc-2333 and Western Blotting Luminol Reagent: sc-2048. 2) Immunoprecipitation: use Protein A/G PLUS-Agarose: sc-2003 (0.5 ml agarose/2.0 ml). 3) Immunofluorescence: use donkey anti-goat IgG-FITC: sc-2024 (dilution range: 1:100-1:400) or donkey anti-goat IgG-TR: sc-2783 (dilution range: 1:100-1:400) with UltraCruz™ Mounting Medium: sc-24941.

DATA



TRIP6 (N-20): sc-34979. Western blot analysis of TRIP6 expression in non-transfected: sc-117752 (A) and human TRIP6 transfected: sc-114028 (B) 293T whole cell lysates.



TRIP6 (N-20): sc-34979. Western blot analysis of TRIP6 expression in K-562 whole cell lysate.

RESEARCH USE

For research use only, not for use in diagnostic procedures.

PROTOCOLS

See our web site at www.scbt.com or our catalog for detailed protocols and support products.



Try **TRIP6 (F-8): sc-166310** or **TRIP6 (F-5): sc-365122**, our highly recommended monoclonal alternatives to TRIP6 (N-20).