

# EMSY (A-15): sc-34995

## BACKGROUND

EMSY interacts with BRCA2 and plays a role in chromatin remodeling. This interaction has been confirmed in HeLa cells. Overexpression of EMSY strongly correlates with amplification in sporadic breast cancer and higher grade ovarian cancer. The EMSY gene is amplified in 18% of breast cancer cell lines. EMSY amplification is highly correlated with DNA amplification in both cell lines and primary tumors. This amplification is a general sign of poor prognosis and shortened disease-free survival time. EMSY from a wide variety of species has a conserved 80 amino acid sequence at the N-terminus. In irradiated MEFs (mouse embryonic fibroblasts), EMSY was found to migrate to damaged DNA.

## REFERENCES

1. Haber, D.A., et al. 2003. The BRCA2-EMSY connection: implications for breast and ovarian tumorigenesis. *Cell* 115: 507-508.
2. Hughes-Davies, L., et al. 2003. EMSY links the BRCA2 pathway to sporadic breast and ovarian cancer. *Cell* 115: 523-535.

## CHROMOSOMAL LOCATION

Genetic locus: C11orf30 (human) mapping to 11q13.5; 2210018M11Rik (mouse) mapping to 7 E2.

## SOURCE

EMSY (A-15) is an affinity purified goat polyclonal antibody raised against a peptide mapping near the N-terminus of EMSY of human origin.

## PRODUCT

Each vial contains 200 µg IgG in 1.0 ml of PBS with < 0.1% sodium azide and 0.1% gelatin.

Blocking peptide available for competition studies, sc-34995 P, (100 µg peptide in 0.5 ml PBS containing < 0.1% sodium azide and 0.2% BSA).

## APPLICATIONS

EMSY (A-15) is recommended for detection of EMSY isoforms 1 and 2 of mouse and human origin by Western Blotting (starting dilution 1:200, dilution range 1:100-1:1000), immunoprecipitation [1-2 µg per 100-500 µg of total protein (1 ml of cell lysate)], immunofluorescence (starting dilution 1:50, dilution range 1:50-1:500), immunohistochemistry (including paraffin-embedded sections) (starting dilution 1:50, dilution range 1:50-1:500) and solid phase ELISA (starting dilution 1:30, dilution range 1:30-1:3000).

EMSY (A-15) is also recommended for detection of EMSY isoforms 1 and 2 in additional species, including canine, bovine, porcine and avian.

Suitable for use as control antibody for EMSY siRNA (h): sc-45565 and EMSY siRNA (m): sc-45566; and as shRNA Plasmid control antibody for EMSY shRNA Plasmid (h): sc-45565-SH and EMSY shRNA Plasmid (m): sc-45566-SH.

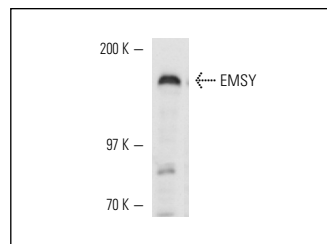
Molecular Weight of EMSY: 141 kDa.

Positive Controls: HeLa whole cell lysate: sc-2200.

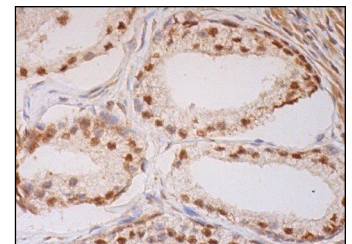
## RECOMMENDED SECONDARY REAGENTS

To ensure optimal results, the following support (secondary) reagents are recommended: 1) Western Blotting: use donkey anti-goat IgG-HRP: sc-2020 (dilution range: 1:2000-1:100,000) or Cruz Marker™ compatible donkey anti-goat IgG-HRP: sc-2033 (dilution range: 1:2000-1:5000), Cruz Marker™ Molecular Weight Standards: sc-2035, TBS Blotto A Blocking Reagent: sc-2333 and Western Blotting Luminol Reagent: sc-2048. 2) Immunoprecipitation: use Protein A/G PLUS-Agarose: sc-2003 (0.5 ml agarose/2.0 ml). 3) Immunofluorescence: use donkey anti-goat IgG-FITC: sc-2024 (dilution range: 1:100-1:400) or donkey anti-goat IgG-TR: sc-2783 (dilution range: 1:100-1:400) with UltraCruz™ Mounting Medium: sc-24941. 4) Immunohistochemistry: use ImmunoCruz™: sc-2053 or ABC: sc-2023 goat IgG Staining Systems.

## DATA



EMSY (A-15): sc-34995. Western blot analysis of EMSY expression in HeLa whole cell lysate.



EMSY (A-15): sc-34995. Immunoperoxidase staining of formalin fixed, paraffin-embedded human prostate tissue showing nuclear and cytoplasmic staining of glandular cells.

## STORAGE

Store at 4° C, **\*\*DO NOT FREEZE\*\***. Stable for one year from the date of shipment. Non-hazardous. No MSDS required.

## RESEARCH USE

For research use only, not for use in diagnostic procedures.

## PROTOCOLS

See our web site at [www.scbt.com](http://www.scbt.com) or our catalog for detailed protocols and support products.


 MONOS  
Satisfaction  
Guaranteed

Try **EMSY (E-9): sc-515469** or **EMSY (5D1): sc-293376**, our highly recommended monoclonal alternatives to EMSY (A-15).