

bovine anti-rabbit IgG-CFL 488: sc-362260

BACKGROUND

Santa Cruz Biotechnology's secondary antibodies are available conjugated to either an enzyme, biotin or fluorophore for use in a variety of antibody-based applications including Western Blot, immunostaining, flow cytometry and ELISA. Secondary antibodies are commonly affinity purified against immobilized whole IgG or against antibody fragments. Santa Cruz Biotechnology offers an extensive selection of secondary antibodies optimized for immunohistochemistry and flow cytometry, and are labeled with multiple conjugates, including biotin, FITC (fluorescein isothiocyanate), Texas Red[®], TRITC (tetramethyl rhodamine iso-thiocyanate), PE (phycoerythrin), PerCP (peridinin chlorophyll protein complex) and PerCP-Cy5.5 (peridinin chlorophyll protein complex with cyanin-5.5). Santa Cruz Biotechnology also supplies CruzFluor[™] (CFL) conjugated secondaries, which are equivalent to Alexa Fluor[®] fluorescent dyes, but have a superior ability to resist protein quenching. CruzFluor[™] conjugated secondaries are available with maximum excitation wavelengths of 405, 488, 555, 594 and 647 nm. Immunohistochemistry and flow cytometry secondary antibodies are specific for commonly used primary antibody species, including goat, rabbit, mouse and rat.

SOURCE

bovine anti-rabbit IgG-CFL 488 is a pre-adsorbed, affinity purified secondary antibody raised in bovine against rabbit IgG and conjugated to CruzFluor[™] 488.

PRODUCT

Each vial contains 200 µg bovine IgG (pre-adsorbed with human IgG) in 0.5 ml of PBS containing 0.1% gelatin and 0.1% sodium azide.

APPLICATIONS

bovine anti-rabbit IgG-CFL 488 is recommended for detection of rabbit IgG by immunofluorescence staining (starting dilution: 1:100, dilution range: 1:100-1:400), immunohistochemical staining (starting dilution: 1:100, dilution range: 1:100-1:400) and flow cytometry (0.5-1 µg per 1 x 10⁶ cells).

RECOMMENDED SUPPORT PRODUCTS

A. TISSUE CULTURE CELLS

- CrystalCruz[™] Cover Glasses, 22 x 50 mm, precleaned: sc-24975
- CrystalCruz[™] Micro Slides 75 x 25 mm; 72 frosted sides: sc-24976
- PBS (Phosphate Buffered Saline), powder, 1 packet: sc-24947
- Hydrogen Peroxide, 30% solution, 100 ml: sc-203336

B. FROZEN TISSUE SECTIONS

- Organo/Limonene Mount, non-toxic alternative to Permount, 100 ml: sc-45087
- UltraCruz[™] Mounting Medium, aqueous-based, 10 ml: sc-24941
- ImmunoHistoMount, aqueous-based mounting medium, 30 ml: sc-45086
- Immuno In Situ Mount, for use with in situ hybridization, 30 ml: sc-45088

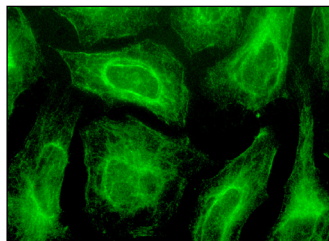
C. FORMALIN-FIXED, PARAFFIN-EMBEDDED TISSUE SECTIONS

- Paraffin, for the preparation of tissue samples for staining, 500 g: sc-286633
- Xylenes, mixed isomers with ethylbenzene, 500 ml: sc-237422
- Hematoxylin, Gill's Formulation #2; nuclear counter stain, 100 ml: sc-24973

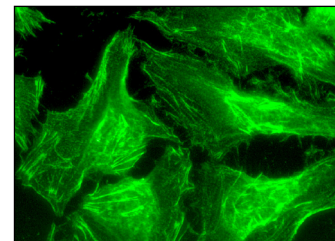
STORAGE

Store at 4° C, ****DO NOT FREEZE****. Stable for one year from the date of shipment. Non-hazardous. No MSDS required.

DATA



bovine anti-rabbit IgG-CFL 488: sc-362260. Immunofluorescence staining of methanol-fixed HeLa cells showing membrane localization. Antibody tested: mAChR M3 (H-210): sc-9108. CruzFluor[™] secondary antibody was conjugated to CruzFluor[™] 488 succinimidyl ester: sc-362617.



bovine anti-rabbit IgG-CFL 488: sc-362260. Immunofluorescence staining of formalin-fixed HeLa cells showing membrane localization. Antibody tested: mAChR M3 (H-210): sc-9108. CruzFluor[™] secondary antibody was conjugated to CruzFluor[™] 488 succinimidyl ester: sc-362617.

RESEARCH USE

For research use only, not for use in diagnostic procedures.

PROTOCOLS

See our web site at www.scbt.com or our catalog for detailed protocols and support products.

Texas Red[®] and Alexa Fluor[®] are registered trademarks of Molecular Probes, Inc., Oregon, USA