

TRIP6 (F-5): sc-365122

BACKGROUND

Zyxin is a LIM domain-containing, zinc finger domain-containing, SH3 ligand-containing phosphoprotein that localizes to focal adhesion plaques and Actin filament bundles. Thyroid receptor interacting protein 6 (TRIP6) is a Zyxin-related protein. TRIP6 interacts with the ligand binding domain of the thyroid receptor and is predominantly expressed in kidney, liver and lung. It interacts with receptor-interacting protein 2 (RIP2) through LIM domains in a TNF- or IL-1-dependent manner. TRIP6 also interacts with TRAF2, a protein that is crucially involved in TNF signaling, as well as the IL-1 receptor, TLR2 and Nod1. Overexpression of TRIP6 facilitates NF κ B activation by TNF, IL-1, TLR2 or Nod1, whereas a dominant negative mutant or RNA-interference construct of TRIP6 inhibits NF κ B activation by TNF, IL-1, TLR2 or Nod1. Moreover, TRIP6 also potentiates RIP2- and Nod1-mediated ERK activation.

CHROMOSOMAL LOCATION

Genetic locus: TRIP6 (human) mapping to 7q22.1; Trip6 (mouse) mapping to 5 G2.

SOURCE

TRIP6 (F-5) is a mouse monoclonal antibody specific for an epitope mapping between amino acids 57-83 near the N-terminus of TRIP6 of human origin.

PRODUCT

Each vial contains 200 μ g IgG₃ kappa light chain in 1.0 ml of PBS with < 0.1% sodium azide and 0.1% gelatin.

Blocking peptide available for competition studies, sc-365122 P, (100 μ g peptide in 0.5 ml PBS containing < 0.1% sodium azide and 0.2% stabilizer protein).

STORAGE

Store at 4° C, ****DO NOT FREEZE****. Stable for one year from the date of shipment. Non-hazardous. No MSDS required.

APPLICATIONS

TRIP6 (F-5) is recommended for detection of TRIP6 of mouse, rat and human origin by Western Blotting (starting dilution 1:100, dilution range 1:100-1:1000), immunoprecipitation [1-2 μ g per 100-500 μ g of total protein (1 ml of cell lysate)], immunofluorescence (starting dilution 1:50, dilution range 1:50-1:500), immunohistochemistry (including paraffin-embedded sections) (starting dilution 1:50, dilution range 1:50-1:500) and solid phase ELISA (starting dilution 1:30, dilution range 1:30-1:3000).

Suitable for use as control antibody for TRIP6 siRNA (h): sc-45561, TRIP6 siRNA (m): sc-45562, TRIP6 shRNA Plasmid (h): sc-45561-SH, TRIP6 shRNA Plasmid (m): sc-45562-SH, TRIP6 shRNA (h) Lentiviral Particles: sc-45561-V and TRIP6 shRNA (m) Lentiviral Particles: sc-45562-V.

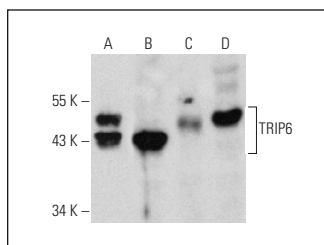
Molecular Weight of TRIP6: 50 kDa.

Positive Controls: HeLa whole cell lysate: sc-2200, Hep G2 cell lysate: sc-2227 or RPE-J cell lysate: sc-24771.

RECOMMENDED SUPPORT REAGENTS

To ensure optimal results, the following support reagents are recommended: 1) Western Blotting: use m-IgG κ BP-HRP: sc-516102 or m-IgG κ BP-HRP (Cruz Marker): sc-516102-CM (dilution range: 1:1000-1:10000), Cruz Marker™ Molecular Weight Standards: sc-2035, UltraCruz® Blocking Reagent: sc-516214 and Western Blotting Luminol Reagent: sc-2048. 2) Immunoprecipitation: use Protein A/G PLUS-Agarose: sc-2003 (0.5 ml agarose/2.0 ml). 3) Immunofluorescence: use m-IgG κ BP-FITC: sc-516140 or m-IgG κ BP-PE: sc-516141 (dilution range: 1:50-1:200) with UltraCruz® Mounting Medium: sc-24941 or UltraCruz® Hard-set Mounting Medium: sc-359850. 4) Immunohistochemistry: use m-IgG κ BP-HRP: sc-516102 with DAB, 50X: sc-24982 and Immunohistomount: sc-45086, or Organo/Limonene Mount: sc-45087.

DATA



TRIP6 (F-5): sc-365122. Western blot analysis of TRIP6 expression in HeLa (A), Hep G2 (B), C6 (C) and RPE-J (D) whole cell lysates.



TRIP6 (F-5): sc-365122. Immunoperoxidase staining of formalin fixed, paraffin-embedded human uterine cervix tissue showing cytoplasmic and nuclear staining of subset of squamous epithelial cells.

SELECT PRODUCT CITATIONS

- Indra, I., et al. 2013. The adherens junction: a mosaic of cadherin and nectin clusters bundled by Actin filaments. *J. Invest. Dermatol.* 133: 2546-2554.
- Ling, Y., et al. 2019. TRIP6, as a target of miR-7, regulates the proliferation and metastasis of colorectal cancer cells. *Biochem. Biophys. Res. Commun.* 514: 231-238.
- Venkatramanan, S., et al. 2021. TRIP6 is required for tension at adherens junctions. *J. Cell Sci.* 134: jcs247866.

RESEARCH USE

For research use only, not for use in diagnostic procedures.

PROTOCOLS

See our web site at www.scbt.com for detailed protocols and support products.