

Desmin (B-12): sc-365130

BACKGROUND

Cytoskeletal intermediate filaments (IFs) constitute a diverse group of proteins that are expressed in a highly tissue-specific manner. IFs are constructed from two-chain α -helical coiled-coil molecules arranged on an imperfect helical lattice, and have been widely used as markers for distinguishing individual cell types within a tissue and identifying the origins of metastatic tumors. Vimentin is an IF general marker of cells originating in the mesenchyme. Vimentin and Desmin, a related class III IF, are both expressed during skeletal muscle development. Desmin, a 469 amino acid protein found near the Z line in sarcomeres, is expressed more frequently in adult differentiated state tissues. Desmin makes up attachments between the terminal Z-disc and membrane-associated proteins to form a force-transmitting system. Mutations in the gene encoding for Desmin are associated with adult-onset skeletal myopathy, sporadic disease and mild cardiac involvement.

CHROMOSOMAL LOCATION

Genetic locus: DES (human) mapping to 2q35; Des (mouse) mapping to 1 C4.

SOURCE

Desmin (B-12) is a mouse monoclonal antibody specific for an epitope mapping between amino acids 413-445 near the C-terminus of Desmin of human origin.

PRODUCT

Each vial contains 200 μ g IgA kappa light chain in 1.0 ml of PBS with < 0.1% sodium azide and 0.1% gelatin.

Blocking peptide available for competition studies, sc-365130 P, (100 μ g peptide in 0.5 ml PBS containing < 0.1% sodium azide and 0.2% stabilizer protein).

RESEARCH USE

For research use only, not for use in diagnostic procedures.

APPLICATIONS

Desmin (B-12) is recommended for detection of Desmin of mouse, rat and human origin by Western Blotting (starting dilution 1:100, dilution range 1:100-1:1000), immunoprecipitation [1-2 μ g per 100-500 μ g of total protein (1 ml of cell lysate)], immunofluorescence (starting dilution 1:50, dilution range 1:50-1:500), immunohistochemistry (including paraffin-embedded sections) (starting dilution 1:50, dilution range 1:50-1:500) and solid phase ELISA (starting dilution 1:30, dilution range 1:30-1:3000).

Desmin (B-12) is also recommended for detection of Desmin in additional species, including canine.

Suitable for use as control antibody for Desmin siRNA (h): sc-29294, Desmin siRNA (m): sc-29295, Desmin shRNA Plasmid (h): sc-29294-SH, Desmin shRNA Plasmid (m): sc-29295-SH, Desmin shRNA (h) Lentiviral Particles: sc-29294-V and Desmin shRNA (m) Lentiviral Particles: sc-29295-V.

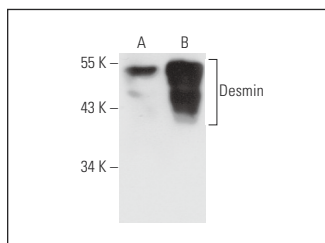
Molecular Weight of Desmin: 53 kDa.

Positive Controls: Sol8 cell lysate: sc-2249 or SJRH30 cell lysate: sc-2287.

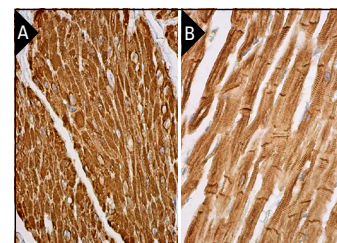
RECOMMENDED SUPPORT REAGENTS

To ensure optimal results, the following support reagents are recommended: 1) Western Blotting: use m-IgG κ BP-HRP: sc-516102 or m-IgG κ BP-HRP (Cruz Marker): sc-516102-CM (dilution range: 1:1000-1:10000), Cruz Marker™ Molecular Weight Standards: sc-2035, UltraCruz® Blocking Reagent: sc-516214 and Western Blotting Luminol Reagent: sc-2048. 2) Immunoprecipitation: use Protein L-Agarose: sc-2336 (0.5 ml agarose/2.0 ml). 3) Immunofluorescence: use m-IgG κ BP-FITC: sc-516140 or m-IgG κ BP-PE: sc-516141 (dilution range: 1:50-1:200) with UltraCruz® Mounting Medium: sc-24941 or UltraCruz® Hard-set Mounting Medium: sc-359850. 4) Immunohistochemistry: use m-IgG κ BP-HRP: sc-516102 with DAB, 50X: sc-24982 and Immunohisto-mount: sc-45086, or Organo/Limonene Mount: sc-45087.

DATA



Desmin (B-12): sc-365130. Western blot analysis of Desmin expression in Sol8 (A) and SJRH30 (B) whole cell lysates.



Desmin (B-12): sc-365130. Immunoperoxidase staining of formalin fixed, paraffin-embedded human smooth muscle tissue showing cytoplasmic staining of smooth muscle cells (A). Immunoperoxidase staining of formalin fixed, paraffin-embedded human heart muscle tissue showing intercalated disc and cytoplasmic staining of myocytes (B).

SELECT PRODUCT CITATIONS

1. Yu, L., et al. 2015. Ligustrazine attenuates the platelet-derived growth factor-BB-induced proliferation and migration of vascular smooth muscle cells by interrupting extracellular signal-regulated kinase and P38 mitogen-activated protein kinase pathways. *Mol. Med. Rep.* 12: 705-711.

STORAGE

Store at 4° C, **DO NOT FREEZE**. Stable for one year from the date of shipment. Non-hazardous. No MSDS required.

PROTOCOLS

See our web site at www.scbt.com for detailed protocols and support products.



See **Desmin (RD301): sc-23879** for Desmin antibody conjugates, including AC, HRP, FITC, PE, and Alexa Fluor® 488, 546, 594, 647, 680 and 790.