

# CFAP298 (C-2): sc-365455

## BACKGROUND

The smallest of the human chromosomes, 21, makes up about 1.5% of the human genome. Chromosome 21 contains nearly 300 genes and 47 million base pairs. Down syndrome, also known as trisomy 21, is the disease most commonly associated with chromosome 21. Alzheimer's disease, Jervell and Lange-Nielsen syndrome and amyotrophic lateral sclerosis are also associated with chromosome 21. Translocations are found to occur between chromosome 21 and 8, and chromosome 21 and 12 in certain leukemias.

## REFERENCES

1. Tesson, F., et al. 1996. Exclusion of KCNE1 (IsK) as a candidate gene for Jervell and Lange-Nielsen syndrome. *J. Mol. Cell. Cardiol.* 28: 2051-2055.
2. Tyson, J., et al. 1997. IsK and KvLQT1: mutation in either of the two subunits of the slow component of the delayed rectifier potassium channel can cause Jervell and Lange-Nielsen syndrome. *Hum. Mol. Genet.* 6: 2179-2185.
3. Müller, S., et al. 2000. Molecular cytogenetic dissection of human chromosomes 3 and 21 evolution. *Proc. Natl. Acad. Sci. USA* 97: 206-211.
4. Mao, R., et al. 2005. Primary and secondary transcriptional effects in the developing human Down syndrome brain and heart. *Genome Biol.* 6: R107.
5. Robakis, N.K. 2006. The discovery and mapping to chromosome 21 of the Alzheimer's amyloid gene: history revised. *J. Alzheimers Dis.* 10: 453-455.
6. Sun, X., et al. 2006. BACE2, as a novel APP  $\theta$ -secretase, is not responsible for the pathogenesis of Alzheimer's disease in Down syndrome. *FASEB J.* 20: 1369-1376.
7. Ait Yahya-Graison, E., et al. 2007. Classification of human chromosome 21 gene-expression variations in Down syndrome: impact on disease phenotypes. *Am. J. Hum. Genet.* 81: 475-491.
8. Peterson, L.F., et al. 2007. Acute myeloid leukemia with the 8q22;21q22 translocation: secondary mutational events and alternative t(8;21) transcripts. *Blood* 110: 799-805.

## CHROMOSOMAL LOCATION

Genetic locus: CFAP298 (human) mapping to 21q22.11; Ckap298 (mouse) mapping to 16 C3.3.

## SOURCE

CFAP298 (C-2) is a mouse monoclonal antibody specific for an epitope mapping between amino acids 149-177 within an internal region of CFAP298 of human origin.

## PRODUCT

Each vial contains 200  $\mu$ g IgG<sub>2b</sub> kappa light chain in 1.0 ml of PBS with < 0.1% sodium azide and 0.1% gelatin.

Blocking peptide available for competition studies, sc-365455 P, (100  $\mu$ g peptide in 0.5 ml PBS containing < 0.1% sodium azide and 0.2% stabilizer protein).

## APPLICATIONS

CFAP298 (C-2) is recommended for detection of CFAP298 of mouse, rat and human origin by Western Blotting (starting dilution 1:100, dilution range 1:100-1:1000), immunoprecipitation [1-2  $\mu$ g per 100-500  $\mu$ g of total protein (1 ml of cell lysate)], immunofluorescence (starting dilution 1:50, dilution range 1:50-1:500) and solid phase ELISA (starting dilution 1:30, dilution range 1:30-1:3000).

Suitable for use as control antibody for CFAP298 siRNA (h): sc-91375, CFAP298 siRNA (m): sc-108141, CFAP298 shRNA Plasmid (h): sc-91375-SH, CFAP298 shRNA Plasmid (m): sc-108141-SH, CFAP298 shRNA (h) Lentiviral Particles: sc-91375-V and CFAP298 shRNA (m) Lentiviral Particles: sc-108141-V.

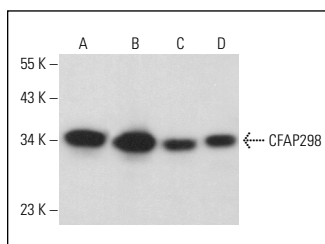
Molecular Weight of CFAP298: 33 kDa.

Positive Controls: HeLa whole cell lysate: sc-2200, MDA-MB-231 cell lysate: sc-2232 or NIH/3T3 whole cell lysate: sc-2210.

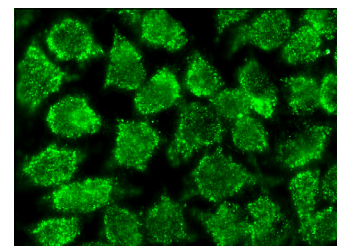
## RECOMMENDED SUPPORT REAGENTS

To ensure optimal results, the following support reagents are recommended: 1) Western Blotting: use m-IgG $\kappa$  BP-HRP: sc-516102 or m-IgG $\kappa$  BP-HRP (Cruz Marker): sc-516102-CM (dilution range: 1:1000-1:10000), Cruz Marker™ Molecular Weight Standards: sc-2035, UltraCruz® Blocking Reagent: sc-516214 and Western Blotting Luminol Reagent: sc-2048. 2) Immunoprecipitation: use Protein A/G PLUS-Agarose: sc-2003 (0.5 ml agarose/2.0 ml). 3) Immunofluorescence: use m-IgG $\kappa$  BP-FITC: sc-516140 or m-IgG $\kappa$  BP-PE: sc-516141 (dilution range: 1:50-1:200) with UltraCruz® Mounting Medium: sc-24941 or UltraCruz® Hard-set Mounting Medium: sc-359850.

## DATA



CFAP298 (C-2): sc-365455. Western blot analysis of CFAP298 expression in HeLa (A), MDA-MB-231 (B), C32 (C) and NIH/3T3 (D) whole cell lysates.



CFAP298 (C-2): sc-365455. Immunofluorescence staining of methanol-fixed HeLa cells showing nuclear and cytoplasmic localization.

## STORAGE

Store at 4° C, \*\*DO NOT FREEZE\*\*. Stable for one year from the date of shipment. Non-hazardous. No MSDS required.

## RESEARCH USE

For research use only, not for use in diagnostic procedures.

## PROTOCOLS

See our web site at [www.scbt.com](http://www.scbt.com) for detailed protocols and support products.