

Stat4 (A-12): sc-365518

BACKGROUND

Membrane receptor signaling by various ligands, including interferons and growth hormones such as EGF, induces activation of JAK kinases which then leads to tyrosine phosphorylation of the various Stat transcription factors. Stat1 and Stat2 are induced by IFN- α and form a heterodimer which is part of the ISGF-3 transcription factor complex. Although early reports indicate Stat3 activation by EGF and IL-6, it has been shown that Stat3 β appears to be activated by both while Stat3 α is activated by EGF, but not by IL-6. Highest expression of Stat4 is seen in testis and myeloid cells. IL-12 has been identified as an activator of Stat4. Stat5 has been shown to be activated by Prolactin and by IL-3. Stat6 is involved in IL-4 activated signaling pathways.

REFERENCES

- Zhong, Z., et al. 1994. Stat3: a Stat family member activated by tyrosine phosphorylation in response to epidermal growth factor and interleukin-6. *Science* 264: 95-98.
- Darnell, J.E., et al. 1994. JAK-Stat pathways and transcriptional activation in response to IFNs and other extracellular signaling proteins. *Science* 264: 1415-1421.
- Hou, J., et al. 1994. An interleukin-4-induced transcription factor: IL-4 Stat. *Science* 265: 1701-1706.
- Yamamoto, K., et al. 1994. Stat4, a novel γ interferon activation site-binding protein expressed in early myeloid differentiation. *Mol. Cell. Biol.* 14: 4342-4349.
- Pallard, C., et al. 1995. Interleukin-3, erythropoietin, and prolactin activate a Stat5-like factor in lymphoid cells. *J. Biol. Chem.* 270: 15942-15945.
- Qureshi, S.A., et al. 1995. Tyrosine-phosphorylated Stat1 and Stat2 plus a 48 kDa protein all contact DNA in forming interferon-stimulated-gene factor 3. *Proc. Nat. Acad. Sci. USA* 92: 3829-3833.

CHROMOSOMAL LOCATION

Genetic locus: STAT4 (human) mapping to 2q32.2; Stat4 (mouse) mapping to 1 C1.1.

SOURCE

Stat4 (A-12) is a mouse monoclonal antibody specific for an epitope mapping between amino acids 129-153 near the N-terminus of Stat4 of human origin.

PRODUCT

Each vial contains 200 μ g IgM kappa light chain in 1.0 ml of PBS with < 0.1% sodium azide and 0.1% gelatin. Also available as TransCruz reagent for Gel Supershift and ChIP applications, sc-365518 X, 200 μ g/0.1 ml.

Blocking peptide available for competition studies, sc-365518 P, (100 μ g peptide in 0.5 ml PBS containing < 0.1% sodium azide and 0.2% stabilizer protein).

STORAGE

Store at 4° C, ****DO NOT FREEZE****. Stable for one year from the date of shipment. Non-hazardous. No MSDS required.

APPLICATIONS

Stat4 (A-12) is recommended for detection of Stat4 of mouse, rat and human origin by Western Blotting (starting dilution 1:200, dilution range 1:100-1:1000), immunoprecipitation [1-2 μ g per 100-500 μ g of total protein (1 ml of cell lysate)], immunofluorescence (starting dilution 1:50, dilution range 1:50-1:500) and solid phase ELISA (starting dilution 1:30, dilution range 1:30-1:3000).

Suitable for use as control antibody for Stat4 siRNA (h): sc-36568, Stat4 siRNA (m): sc-36569, Stat4 shRNA Plasmid (h): sc-36568-SH, Stat4 shRNA Plasmid (m): sc-36569-SH, Stat4 shRNA (h) Lentiviral Particles: sc-36568-V and Stat4 shRNA (m) Lentiviral Particles: sc-36569-V.

Stat4 (A-12) X TransCruz antibody is recommended for Gel Supershift and ChIP applications.

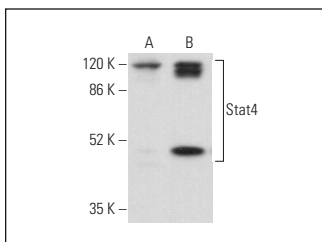
Molecular Weight of Stat4: 89 kDa.

Positive Controls: ACHN whole cell lysate: sc-364365, mouse testis extract: sc-2405 or SUP-T1 whole cell lysate: sc-364796.

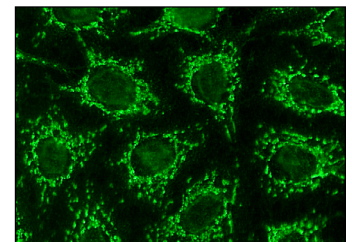
RECOMMENDED SUPPORT REAGENTS

To ensure optimal results, the following support reagents are recommended: 1) Western Blotting: use m-IgG κ BP-HRP: sc-516102 or m-IgG κ BP-HRP (Cruz Marker): sc-516102-CM (dilution range: 1:1000-1:10000), Cruz Marker™ Molecular Weight Standards: sc-2035, UltraCruz® Blocking Reagent: sc-516214 and Western Blotting Luminol Reagent: sc-2048. 2) Immunoprecipitation: use Protein L-Agarose: sc-2336 (0.5 ml agarose/2.0 ml). 3) Immunofluorescence: use m-IgG κ BP-FITC: sc-516140 or m-IgG κ BP-PE: sc-516141 (dilution range: 1:50-1:200) with UltraCruz® Mounting Medium: sc-24941 or UltraCruz® Hard-set Mounting Medium: sc-359850.

DATA



Stat4 (A-12): sc-365518. Western blot analysis of Stat4 expression in ACHN (A) and SUP-T1 (B) whole cell lysates.



Stat4 (A-12): sc-365518. Immunofluorescence staining of methanol-fixed HeLa cells showing cytoplasmic localization.

RESEARCH USE

For research use only, not for use in diagnostic procedures.



See **Stat4 (C-4): sc-398228** for Stat4 antibody conjugates, including AC, HRP, FITC, PE, and Alexa Fluor® 488, 546, 594, 647, 680 and 790.