

HEB (C-7): sc-365572

BACKGROUND

Differentiation of myogenic cells is regulated by multiple positively and negatively acting factors. One well characterized family of helix-loop-helix (HLH) proteins known to play an important role in the regulation of muscle cell development includes MyoD, myogenin, Myf-5 and Myf-6 (also designated MRF-4 or herculin). MyoD transcription factors form heterodimers with products of a more widely expressed family of bHLH genes, the E family, which consists of at least three distinct genes: E2A, IF2 and HEB. MyoD-E heterodimers bind avidly to consensus (CANNTG) E box target sites that are functionally important elements in the upstream regulatory sequences of many muscle-specific terminal differentiation genes. Both homo- and hetero-oligomers of these proteins are able to distinguish very closely related E box proteins and are believed to play important roles in lineage specific gene expression.

REFERENCES

1. Wright, W.E., et al. 1989. Myogenin, a factor regulating myogenesis, has a domain homologous to MyoD. *Cell* 56: 607-617.
2. Murre, C., et al. 1989. Interactions between heterologous helix-loop-helix proteins generate complexes that bind specifically to a common DNA sequence. *Cell* 58: 537-544.
3. Braun, T., et al. 1989. A novel human muscle factor related to but distinct from MyoD1 induces myogenic conversion in 10T1/2 fibroblasts. *EMBO J.* 8: 701-709.
4. Rhodes, S.J. and Konieczny, S.F. 1989. Identification of MRF4: a new member of the muscle regulatory factor gene family. *Genes Dev.* 3: 2050-2061.
5. Miner, J.H. and Wold, B. 1990. Herculins, a fourth member of the MyoD family of myogenic regulatory genes. *Proc. Natl. Acad. Sci. USA* 87: 1089-1093.
6. Anthony-Cahill, S.J., et al. 1992. Molecular characterization of helix-loop-helix peptides. *Science* 255: 979-983.

CHROMOSOMAL LOCATION

Genetic locus: TCF12 (human) mapping to 15q21.3; Tcf12 (mouse) mapping to 9 D.

SOURCE

HEB (C-7) is a mouse monoclonal antibody specific for an epitope mapping between amino acids 652-683 within the C-terminus of HEB of human origin.

PRODUCT

Each vial contains 200 µg IgG₁ kappa light chain in 1.0 ml of PBS with < 0.1% sodium azide and 0.1% gelatin. Also available as TransCruz reagent for Gel Supershift and ChIP applications, sc-365572 X, 200 µg/0.1 ml.

Blocking peptide available for competition studies, sc-365572 P, (100 µg peptide in 0.5 ml PBS containing < 0.1% sodium azide and 0.2% stabilizer protein).

APPLICATIONS

HEB (C-7) is recommended for detection of HEB of mouse, rat and human origin by Western Blotting (starting dilution 1:100, dilution range 1:100-1:1000), immunoprecipitation [1-2 µg per 100-500 µg of total protein (1 ml of cell lysate)], immunofluorescence (starting dilution 1:50, dilution range 1:50-1:500) and solid phase ELISA (starting dilution 1:30, dilution range 1:30-1:3000).

HEB (C-7) is also recommended for detection of HEB in additional species, including equine and bovine.

Suitable for use as control antibody for HEB siRNA (h): sc-35552, HEB siRNA (m): sc-35553, HEB shRNA Plasmid (h): sc-35552-SH, HEB shRNA Plasmid (m): sc-35553-SH, HEB shRNA (h) Lentiviral Particles: sc-35552-V and HEB shRNA (m) Lentiviral Particles: sc-35553-V.

HEB (C-7) X TransCruz antibody is recommended for Gel Supershift and ChIP applications.

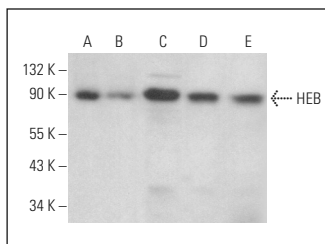
Molecular Weight of HEB: 85 kDa.

Positive Controls: HeLa nuclear extract: sc-2120, SJRH30 cell lysate: sc-2287 or SW480 cell lysate: sc-2219.

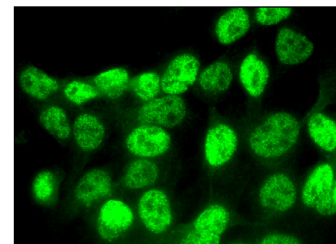
RECOMMENDED SUPPORT REAGENTS

To ensure optimal results, the following support reagents are recommended: 1) Western Blotting: use m-IgGκ BP-HRP: sc-516102 or m-IgGκ BP-HRP (Cruz Marker): sc-516102-CM (dilution range: 1:1000-1:10000), Cruz Marker™ Molecular Weight Standards: sc-2035, UltraCruz® Blocking Reagent: sc-516214 and Western Blotting Luminol Reagent: sc-2048. 2) Immunoprecipitation: use Protein A/G PLUS-Agarose: sc-2003 (0.5 ml agarose/2.0 ml). 3) Immunofluorescence: use m-IgGκ BP-FITC: sc-516140 or m-IgGκ BP-PE: sc-516141 (dilution range: 1:50-1:200) with UltraCruz® Mounting Medium: sc-24941 or UltraCruz® Hard-set Mounting Medium: sc-359850.

DATA



HEB (C-7): sc-365572. Western blot analysis of HEB expression in HeLa (A) and Hep G2 (B) nuclear extracts and SJRH30 (C), SW480 (D) and NIH/3T3 (E) whole cell lysates.



HEB (C-7): sc-365572. Immunofluorescence staining of formalin-fixed Hep G2 cells showing nuclear localization.

STORAGE

Store at 4° C, **DO NOT FREEZE**. Stable for one year from the date of shipment. Non-hazardous. No MSDS required.

RESEARCH USE

For research use only, not for use in diagnostic procedures.