

# BAFF-R (F-3): sc-365610

## BACKGROUND

TNF cytokine family member TALL-1 (also designated BAFF, zTNF4, THANK and BLYS) is a type II membrane protein that shares characteristics with other members of the tumor necrosis factor (TNF) cytokine family. TALL-1 has the ability to bind to three receptors, TACI, BCMA and BAFF-R, but unlike other TNF receptors BAFF-R specifically binds only the TALL-1 ligand. The gene encoding human BAFF-R, which maps to chromosome 22q13.2, is expressed at high levels in spleen and lymph nodes and at lower levels in peripheral blood leukocytes and thymus. Expression of BAFF-R is crucial for selecting transitional B cells into the mature B cell pool.

## REFERENCES

- Schneider, P., MacKay, F., Steiner, V., Hofmann, K., Bodmer, J.L., Holler, N., Ambrose, C., Lawton, P., Bixler, S., Acha-Orbea, H., Valmori, D., Romero, P., Werner-Favre, C., Zubler, R.H., Browning, J.L. and Tschopp, J. 1999. BAFF, a novel ligand of the tumor necrosis factor family, stimulates B cell growth. *J. Exp. Med.* 189: 1747-1756.
- Moore, P.A., Belvedere, O., Orr, A., Pieri, K., LaFleur, D.W., Feng, P., Soppet, D., Charters, M., Gentz, R., Parmelee, D., Li, Y., Galperina, O., Giri, J., Roschke, V., Nardelli, B., Carrell, J., Sosnovtseva, S., Greenfield, W., Ruben, S.M., Olsen, H.S., Fikes, J. and Hilbert, D.M. 1999. BLYS: member of the tumor necrosis factor family and B lymphocyte stimulator. *Science* 285: 260-263.
- Mukhopadhyay, A., Ni, J., Zhai, Y., Yu, G.L. and Aggarwal, B.B. 1999. Identification and characterization of a novel cytokine, THANK, a TNF homologue that activates apoptosis, nuclear factor- $\kappa$ B, and c-Jun NH<sub>2</sub>-terminal kinase. *J. Biol. Chem.* 274: 15978-15981.
- Waldschmidt, T.J. and Noelle, R.J. 2001. Immunology. Long live the mature B cell—a baffling mystery resolved. *Science* 293: 2012-2013.
- Thompson, J.S., Bixler, S.A., Qian, F., Vora, K., Scott, M.L., Cachero, T.G., Hession, C., Schneider, P., Sizing, I.D., Mullen, C., Strauch, K., Zafari, M., Benjamin, C.D., Tschopp, J., Browning, J.L. and Ambrose, C. 2001. BAFF-R, a newly identified TNF receptor that specifically interacts with BAFF. *Science* 293: 2108-2111.

## CHROMOSOMAL LOCATION

Genetic locus: TNFRSF13C (human) mapping to 22q13.2; Tnfrsf13c (mouse) mapping to 15 E1.

## SOURCE

BAFF-R (F-3) is a mouse monoclonal antibody raised against amino acids 22-184 of BAFF-R of human origin.

## PRODUCT

Each vial contains 200  $\mu$ g IgG<sub>2a</sub> kappa light chain in 1.0 ml of PBS with < 0.1% sodium azide and 0.1% gelatin.

## STORAGE

Store at 4° C, **\*\*DO NOT FREEZE\*\***. Stable for one year from the date of shipment. Non-hazardous. No MSDS required.

## APPLICATIONS

BAFF-R (F-3) is recommended for detection of BAFF-R of mouse, rat and human origin by Western Blotting (starting dilution 1:100, dilution range 1:100-1:1000), immunoprecipitation [1-2  $\mu$ g per 100-500  $\mu$ g of total protein (1 ml of cell lysate)], immunofluorescence (starting dilution 1:50, dilution range 1:50-1:500) and solid phase ELISA (starting dilution 1:30, dilution range 1:30-1:3000).

Suitable for use as control antibody for BAFF-R siRNA (h): sc-40231, BAFF-R siRNA (m): sc-40232, BAFF-R shRNA Plasmid (h): sc-40231-SH, BAFF-R shRNA Plasmid (m): sc-40232-SH, BAFF-R shRNA (h) Lentiviral Particles: sc-40231-V and BAFF-R shRNA (m) Lentiviral Particles: sc-40232-V.

Molecular Weight of BAFF-R monomer: 19 kDa.

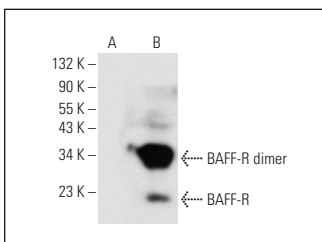
Molecular Weight of BAFF-R dimer: 40 kDa.

Positive Controls: BAFF-R (h): 293 Lysate: sc-128078.

## RECOMMENDED SUPPORT REAGENTS

To ensure optimal results, the following support reagents are recommended: 1) Western Blotting: use m-IgG $\kappa$  BP-HRP: sc-516102 or m-IgG $\kappa$  BP-HRP (Cruz Marker): sc-516102-CM (dilution range: 1:1000-1:10000), Cruz Marker™ Molecular Weight Standards: sc-2035, UltraCruz® Blocking Reagent: sc-516214 and Western Blotting Luminol Reagent: sc-2048. 2) Immunoprecipitation: use Protein A/G PLUS-Agarose: sc-2003 (0.5 ml agarose/2.0 ml). 3) Immunofluorescence: use m-IgG $\kappa$  BP-FITC: sc-516140 or m-IgG $\kappa$  BP-PE: sc-516141 (dilution range: 1:50-1:200) with UltraCruz® Mounting Medium: sc-24941 or UltraCruz® Hard-set Mounting Medium: sc-359850.

## DATA



BAFF-R (F-3): sc-365610. Western blot analysis of BAFF-R expression in non-transfected: sc-110760 (A) and human BAFF-R transfected: sc-128078 (B) 293 whole cell lysates.

## RESEARCH USE

For research use only, not for use in diagnostic procedures.

## PROTOCOLS

See our web site at [www.scbt.com](http://www.scbt.com) for detailed protocols and support products.