

RCL (C-8): sc-365682

BACKGROUND

RCL is a 174 amino acid protein that belongs to the deoxyribonucleoside 5'-monophosphate N-glycosidase family. It is suggested that the RCL protein plays a role during cellular proliferation and c-Myc-mediated transformation. RCL is expressed at high levels in heart, kidney, liver, skeletal muscle and spleen, low levels in brain, colon, lung, peripheral blood leukocytes, placenta, small intestine and thymus, and overexpressed in a significant proportion of breast cancers. Localizing to nucleus and cytoplasm, expression of RCL is induced by ER81. The RCL gene is conserved in chimpanzee, canine, mouse, rat and zebrafish, and maps to human chromosome 6p21.1. Making up nearly 6% of the human genome, chromosome 6 contains around 1,200 genes within 170 million base pairs of sequence. Notably, the PARK2 gene, which is associated with Parkinson's disease, and the genes encoding the major histocompatibility complex proteins, which are key molecular components of the immune system and determine predisposition to rheumatic diseases, are also located on chromosome 6.

REFERENCES

- Lewis, B.C., et al. 1997. Identification of putative c-Myc-responsive genes: characterization of RCL, a novel growth-related gene. *Mol. Cell. Biol.* 17: 4967-4978.
- Mungall, A.J., et al. 2003. The DNA sequence and analysis of human chromosome 6. *Nature* 425: 805-811.
- Safadi, S.S., et al. 2007. A disease state mutation unfolds the Parkin ubiquitin-like domain. *Biochemistry* 46: 14162-14169.
- Park, E., et al. 2007. Modulation of Parkin gene expression in noradrenergic neuronal cells. *Int. J. Dev. Neurosci.* 25: 491-497.
- Bläker, H., et al. 2008. Recurrent deletions at 6q in early age of onset non-HNPCC- and non-FAP-associated intestinal carcinomas. Evidence for a novel cancer susceptibility locus at 6q14-q22. *Genes Chromosomes Cancer* 47: 159-164.

CHROMOSOMAL LOCATION

Genetic locus: DNPH1 (human) mapping to 6p21.1.

SOURCE

RCL (C-8) is a mouse monoclonal antibody raised against amino acids 1-174 representing full length RCL of human origin.

PRODUCT

Each vial contains 200 µg IgG₁ kappa light chain in 1.0 ml of PBS with < 0.1% sodium azide and 0.1% gelatin.

RCL (C-8) is available conjugated to agarose (sc-365682 AC), 500 µg/0.25 ml agarose in 1 ml, for IP; to HRP (sc-365682 HRP), 200 µg/ml, for WB, IHC(P) and ELISA; to either phycoerythrin (sc-365682 PE), fluorescein (sc-365682 FITC), Alexa Fluor® 488 (sc-365682 AF488), Alexa Fluor® 546 (sc-365682 AF546), Alexa Fluor® 594 (sc-365682 AF594) or Alexa Fluor® 647 (sc-365682 AF647), 200 µg/ml, for WB (RGB), IF, IHC(P) and FCM; and to either Alexa Fluor® 680 (sc-365682 AF680) or Alexa Fluor® 790 (sc-365682 AF790), 200 µg/ml, for Near-Infrared (NIR) WB, IF and FCM.

APPLICATIONS

RCL (C-8) is recommended for detection of RCL of human origin by Western Blotting (starting dilution 1:100, dilution range 1:100-1:1000), immunoprecipitation (1-2 µg per 100-500 µg of total protein (1 ml of cell lysate)), immunofluorescence (starting dilution 1:50, dilution range 1:50-1:500) and solid phase ELISA (starting dilution 1:30, dilution range 1:30-1:3000).

Suitable for use as control antibody for RCL siRNA (h): sc-95242, RCL shRNA Plasmid (h): sc-95242-SH and RCL shRNA (h) Lentiviral Particles: sc-95242-V.

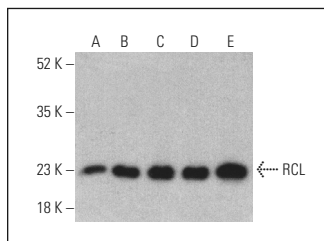
Molecular Weight of RCL: 19 kDa.

Positive Controls: K-562 nuclear extract: sc-2130, Jurkat nuclear extract: sc-2132 or MCF7 nuclear extract: sc-2149.

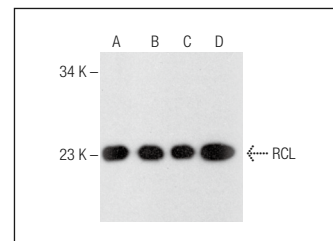
RECOMMENDED SUPPORT REAGENTS

To ensure optimal results, the following support reagents are recommended: 1) Western Blotting: use m-IgGκ BP-HRP: sc-516102 or m-IgGκ BP-HRP (Cruz Marker): sc-516102-CM (dilution range: 1:1000-1:10000), Cruz Marker™ Molecular Weight Standards: sc-2035, UltraCruz® Blocking Reagent: sc-516214 and Western Blotting Luminol Reagent: sc-2048. 2) Immunoprecipitation: use Protein A/G PLUS-Agarose: sc-2003 (0.5 ml agarose/2.0 ml). 3) Immunofluorescence: use m-IgGκ BP-FITC: sc-516140 or m-IgGκ BP-PE: sc-516141 (dilution range: 1:50-1:200) with UltraCruz® Mounting Medium: sc-24941 or UltraCruz® Hard-set Mounting Medium: sc-359850.

DATA



RCL (C-8) HRP: sc-365682 HRP. Direct western blot analysis of RCL expression in HeLa (A), K-562 (B), Jurkat (C) and MCF7 (D) nuclear extracts and T-47D whole cell lysate (E).



RCL (C-8): sc-365682. Western blot analysis of RCL expression in HeLa (A), K-562 (B), Jurkat (C) and MCF7 (D) nuclear extracts.

SELECT PRODUCT CITATIONS

- Hosoya, M., et al. 2021. The common marmoset as suitable non-human alternative for the analysis of primate cochlear development. *FEBS J.* 288: 325-353.

STORAGE

Store at 4° C, **DO NOT FREEZE**. Stable for one year from the date of shipment. Non-hazardous. No MSDS required.

RESEARCH USE

For research use only, not for use in diagnostic procedures.

Alexa Fluor® is a trademark of Molecular Probes, Inc., Oregon, USA