

EMILIN-1 (C-6): sc-365737

BACKGROUND

EMILIN (elastin microfibril interface located protein) is an extracellular matrix glycoprotein that localizes to sites where elastin and microfibrils are in proximity. EMILIN protein is abundant in elastin-rich tissues such as blood vessels, skin, heart, and lung. EMILIN-1 influences placenta formation and initial organogenesis and a later role in interstitial connective tissue.

REFERENCES

- Doliana, R., et al. 1999. EMILIN, a component of the elastic fiber and a new member of the C1q/tumor necrosis factor superfamily of proteins. *J. Biol. Chem.* 274: 16773-16781.
- Mongiati, M., et al. 2000. Self-assembly and supramolecular organization of EMILIN. *J. Biol. Chem.* 275: 25471-25480.
- Braghetta, P., et al. 2002. Expression of the EMILIN-1 gene during mouse development. *Matrix Biol.* 21: 603-609.
- Spessotto, P., et al. 2003. β 1 Integrin-dependent cell adhesion to EMILIN-1 is mediated by the gC1q domain. *J. Biol. Chem.* 278: 6160-6167.
- Verdone, G., et al. 2004. Sequence-specific backbone NMR assignments for the C-terminal globular domain of EMILIN-1. *J. Biomol. NMR* 29: 91-92.
- Zanetti, M., et al. 2004. EMILIN-1 deficiency induces elastogenesis and vascular cell defects. *Mol. Cell. Biol.* 24: 638-650.
- LocusLink Report (LocusID: 11117). <http://www.ncbi.nlm.nih.gov/LocusLink/>

CHROMOSOMAL LOCATION

Genetic locus: EMILIN1 (human) mapping to 2p23.3; Emilin1 (mouse) mapping to 5 B1.

SOURCE

EMILIN-1 (C-6) is a mouse monoclonal antibody raised against amino acids 187-266 mapping within an internal region of EMILIN-1 of human origin.

PRODUCT

Each vial contains 200 μ g IgG₁ kappa light chain in 1.0 ml of PBS with < 0.1% sodium azide and 0.1% gelatin.

EMILIN-1 (C-6) is available conjugated to agarose (sc-365737 AC), 500 μ g/0.25 ml agarose in 1 ml, for IP; to HRP (sc-365737 HRP), 200 μ g/ml, for WB, IHC(P) and ELISA; to either phycoerythrin (sc-365737 PE), fluorescein (sc-365737 FITC), Alexa Fluor® 488 (sc-365737 AF488), Alexa Fluor® 546 (sc-365737 AF546), Alexa Fluor® 594 (sc-365737 AF594) or Alexa Fluor® 647 (sc-365737 AF647), 200 μ g/ml, for WB (RGB), IF, IHC(P) and FCM; and to either Alexa Fluor® 680 (sc-365737 AF680) or Alexa Fluor® 790 (sc-365737 AF790), 200 μ g/ml, for Near-Infrared (NIR) WB, IF and FCM.

Alexa Fluor® is a trademark of Molecular Probes, Inc., Oregon, USA

STORAGE

Store at 4° C, ****DO NOT FREEZE****. Stable for one year from the date of shipment. Non-hazardous. No MSDS required.

APPLICATIONS

EMILIN-1 (C-6) is recommended for detection of EMILIN-1 of mouse, rat and human origin by Western Blotting (starting dilution 1:100, dilution range 1:100-1:1000), immunoprecipitation [1-2 μ g per 100-500 μ g of total protein (1 ml of cell lysate)], immunofluorescence (starting dilution 1:50, dilution range 1:50-1:500) and solid phase ELISA (starting dilution 1:30, dilution range 1:30-1:3000).

Suitable for use as control antibody for EMILIN-1 siRNA (h): sc-60016, EMILIN-1 siRNA (m): sc-60017, EMILIN-1 shRNA Plasmid (h): sc-60016-SH, EMILIN-1 shRNA Plasmid (m): sc-60017-SH, EMILIN-1 shRNA (h) Lentiviral Particles: sc-60016-V and EMILIN-1 shRNA (m) Lentiviral Particles: sc-60017-V.

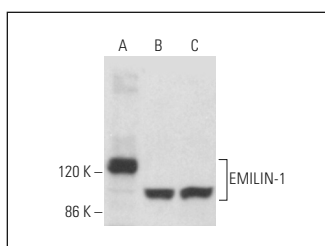
Molecular Weight of EMILIN-1: 115 kDa.

Positive Controls: Hep G2 cell lysate: sc-2227, SK-N-MC cell lysate: sc-2237 or H4 cell lysate: sc-2408.

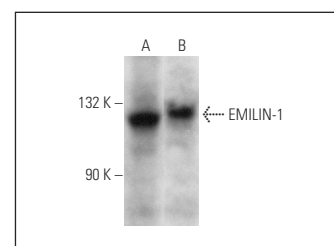
RECOMMENDED SUPPORT REAGENTS

To ensure optimal results, the following support reagents are recommended: 1) Western Blotting: use m-IgG κ BP-HRP: sc-516102 or m-IgG κ BP-HRP (Cruz Marker): sc-516102-CM (dilution range: 1:1000-1:10000), Cruz Marker™ Molecular Weight Standards: sc-2035, UltraCruz® Blocking Reagent: sc-516214 and Western Blotting Luminol Reagent: sc-2048. 2) Immunoprecipitation: use Protein A/G PLUS-Agarose: sc-2003 (0.5 ml agarose/2.0 ml). 3) Immunofluorescence: use m-IgG κ BP-FITC: sc-516140 or m-IgG κ BP-PE: sc-516141 (dilution range: 1:50-1:200) with UltraCruz® Mounting Medium: sc-24941 or UltraCruz® Hard-set Mounting Medium: sc-359850.

DATA



EMILIN-1 (C-6): sc-365737. Western blot analysis of EMILIN-1 expression in Hep G2 (A), Sol8 (B) and A-10 (C) whole cell lysates.



EMILIN-1 (C-6): sc-365737. Western blot analysis of EMILIN-1 expression in H4 (A) and SK-N-MC (B) whole cell lysates.

RESEARCH USE

For research use only, not for use in diagnostic procedures.

PROTOCOLS

See our web site at www.scbt.com for detailed protocols and support products.