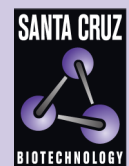


# KSP37 (D-2): sc-365803



The Power to Question

## BACKGROUND

KSP37 (37 kDa killer-specific secretory protein), also known as FGFBP2 (fibroblast growth factor binding protein 2), is a 223 amino acid protein that is secreted into the extracellular space and belongs to the fibroblast growth factor-binding protein family. Expressed in serum, as well as in cytotoxic T lymphocytes and peripheral leukocytes, KSP37 is thought to be involved in lymphocyte-mediated immunity, possibly playing a role in the development of asthma. The gene encoding KSP37 maps to human chromosome 4, which encodes nearly 6% of the human genome and has the largest gene deserts (regions of the genome with no protein encoding genes) of all of the human chromosomes. Defects in some of the genes located on chromosome 4 are associated with Huntington's disease, Ellis-van Creveld syndrome, methylmalonic acidemia and polycystic kidney disease.

## REFERENCES

- Ogawa, K., et al. 2001. A novel serum protein that is selectively produced by cytotoxic lymphocytes. *J. Immunol.* 166: 6404-6412.
- Hayano, C., et al. 2002. Accumulation of CD16<sup>+</sup> cells with secretion of KSP37 in decidua at the end of pregnancy. *Am. J. Reprod. Immunol.* 48: 57-62.
- Online Mendelian Inheritance in Man, OMIM™. 2003. Johns Hopkins University, Baltimore, MD. MIM Number: 607713. World Wide Web URL: <http://www.ncbi.nlm.nih.gov/omim/>
- Kuepper, M., et al. 2004. Increase in KSP37-positive peripheral blood lymphocytes in mild extrinsic asthma. *Clin. Exp. Immunol.* 137: 359-365.

## CHROMOSOMAL LOCATION

Genetic locus: FGFBP2 (human) mapping to 4p15.32.

## SOURCE

KSP37 (D-2) is a mouse monoclonal antibody specific for an epitope mapping between amino acids 21-50 near the N-terminus of KSP37 of human origin.

## PRODUCT

Each vial contains 200 µg IgG<sub>1</sub> kappa light chain in 1.0 ml of PBS with < 0.1% sodium azide and 0.1% gelatin.

KSP37 (D-2) is available conjugated to agarose (sc-365803 AC), 500 µg/0.25 ml agarose in 1 ml, for IP; to HRP (sc-365803 HRP), 200 µg/ml, for WB, IHC(P) and ELISA; to either phycoerythrin (sc-365803 PE), fluorescein (sc-365803 FITC), Alexa Fluor® 488 (sc-365803 AF488), Alexa Fluor® 546 (sc-365803 AF546), Alexa Fluor® 594 (sc-365803 AF594) or Alexa Fluor® 647 (sc-365803 AF647), 200 µg/ml, for WB (RGB), IF, IHC(P) and FCM; and to either Alexa Fluor® 680 (sc-365803 AF680) or Alexa Fluor® 790 (sc-365803 AF790), 200 µg/ml, for Near-Infrared (NIR) WB, IF and FCM.

Blocking peptide available for competition studies, sc-365803 P, (100 µg peptide in 0.5 ml PBS containing < 0.1% sodium azide and 0.2% stabilizer protein).

Alexa Fluor® is a trademark of Molecular Probes, Inc., Oregon, USA

## APPLICATIONS

KSP37 (D-2) is recommended for detection of KSP37 of mouse, rat and human origin by Western Blotting (starting dilution 1:100, dilution range 1:100-1:1000), immunoprecipitation [1-2 µg per 100-500 µg of total protein (1 ml of cell lysate)], immunofluorescence (starting dilution 1:50, dilution range 1:50-1:500), immunohistochemistry (including paraffin-embedded sections) (starting dilution 1:50, dilution range 1:50-1:500) and solid phase ELISA (starting dilution 1:30, dilution range 1:30-1:3000).

Suitable for use as control antibody for KSP37 siRNA (h): sc-75399, KSP37 shRNA Plasmid (h): sc-75399-SH and KSP37 shRNA (h) Lentiviral Particles: sc-75399-V.

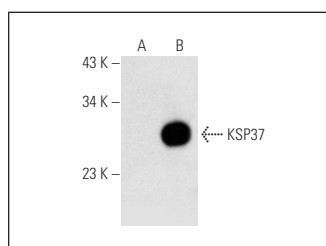
Molecular Weight of KSP37: 24 kDa.

Positive Controls: KSP37 (h3): 293T Lysate: sc-114210.

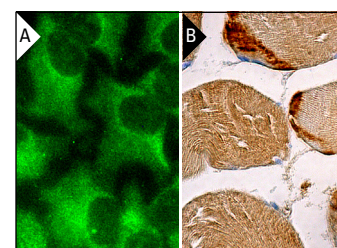
## RECOMMENDED SUPPORT REAGENTS

To ensure optimal results, the following support reagents are recommended: 1) Western Blotting: use m-IgGκ BP-HRP: sc-516102 or m-IgGκ BP-HRP (Cruz Marker): sc-516102-CM (dilution range: 1:1000-1:10000), Cruz Marker™ Molecular Weight Standards: sc-2035, UltraCruz® Blocking Reagent: sc-516214 and Western Blotting Luminol Reagent: sc-2048. 2) Immunoprecipitation: use Protein A/G PLUS-Agarose: sc-2003 (0.5 ml agarose/2.0 ml). 3) Immunofluorescence: use m-IgGκ BP-FITC: sc-516140 or m-IgGκ BP-PE: sc-516141 (dilution range: 1:50-1:200) with UltraCruz® Mounting Medium: sc-24941 or UltraCruz® Hard-set Mounting Medium: sc-359850. 4) Immunohistochemistry: use m-IgGκ BP-HRP: sc-516102 with DAB, 50X: sc-24982 and Immunohistomount: sc-45086, or Organo/Limonene Mount: sc-45087.

## DATA



KSP37 (D-2): sc-365803. Western blot analysis of KSP37 expression in non-transfected: sc-117752 (A) and human KSP37 transfected: sc-114210 (B) 293T whole cell lysates.



KSP37 (D-2): sc-365803. Immunofluorescence staining of methanol-fixed HeLa cells showing cytoplasmic localization (A). Immunoperoxidase staining of formalin fixed, paraffin-embedded human skeletal muscle tissue showing cytoplasmic staining of myocytes (B).

## STORAGE

Store at 4° C, \*\*DO NOT FREEZE\*\*. Stable for one year from the date of shipment. Non-hazardous. No MSDS required.

## RESEARCH USE

For research use only, not for use in diagnostic procedures.