

# ACTH/CLIP (E-12): sc-365831

## BACKGROUND

POMC (pro-opiomelanocortin), also known as corticotropin-lipotropin, is a 267 amino acid polypeptide hormone precursor that goes through extensive, tissue-specific post-translational processing by prohormone convertases. POMC is cleaved into ten hormone chains named NPP,  $\gamma$ -MSH, ACTH,  $\alpha$ -MSH, CLIP (corticotropin-like intermediary peptide), Lipotropin  $\beta$ , Lipotropin  $\gamma$ ,  $\beta$ -MSH,  $\beta$  endorphin and Met-enkephalin. Defects in the gene that encodes POMC are the cause of POMC deficiency, which is characterized by red hair and adrenal insufficiency. Mutations in the POMC gene have also been linked to susceptibility to obesity. ACTH, also known as corticotropin, is a 39 amino acid active peptide that stimulates the secretion of cortisol by the adrenal gland. CLIP is a 21 amino acid neuropeptide secreted by corticotrope cells of adenohypophysis.

## CHROMOSOMAL LOCATION

Genetic locus: POMC (human) mapping to 2p23.3; Pomc (mouse) mapping to 12 A1.1.

## SOURCE

ACTH/CLIP (E-12) is a mouse monoclonal antibody specific for an epitope mapping between amino acids 158-183 within an internal region of POMC of mouse origin.

## PRODUCT

Each vial contains 200  $\mu$ g IgG<sub>2a</sub> kappa light chain in 1.0 ml of PBS with < 0.1% sodium azide and 0.1% gelatin.

Blocking peptide available for competition studies, sc-365831 P, (100  $\mu$ g peptide in 0.5 ml PBS containing < 0.1% sodium azide and 0.2% stabilizer protein).

## RESEARCH USE

For research use only, not for use in diagnostic procedures.

## APPLICATIONS

ACTH/CLIP (E-12) is recommended for detection of POMC and the processed active peptides ACTH and CLIP of mouse, rat and human origin by Western Blotting (starting dilution 1:100, dilution range 1:100-1:1000), immunoprecipitation [1-2  $\mu$ g per 100-500  $\mu$ g of total protein (1 ml of cell lysate)], immunofluorescence (starting dilution 1:50, dilution range 1:50-1:500) and solid phase ELISA (starting dilution 1:30, dilution range 1:30-1:3000).

Suitable for use as control antibody for POMC siRNA (h): sc-37277, POMC siRNA (m): sc-37278, POMC shRNA Plasmid (h): sc-37277-SH, POMC shRNA Plasmid (m): sc-37278-SH, POMC shRNA (h) Lentiviral Particles: sc-37277-V and POMC shRNA (m) Lentiviral Particles: sc-37278-V.

Molecular Weight of POMC precursor: 30 kDa.

Molecular Weight of ACTH: 5 kDa.

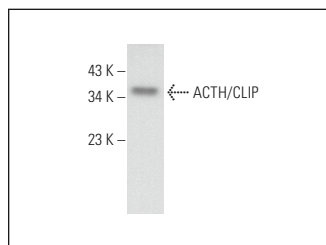
Molecular Weight of CLIP: 3 kDa.

Positive Controls: mouse pituitary gland extract: sc-364246 or AtT-20/D16vF2 whole cell lysate: sc-364367.

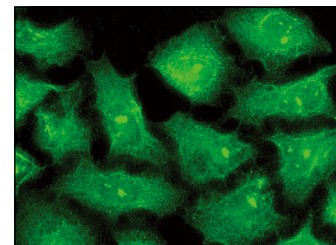
## RECOMMENDED SUPPORT REAGENTS

To ensure optimal results, the following support reagents are recommended: 1) Western Blotting: use m-IgG $\kappa$  BP-HRP: sc-516102 or m-IgG $\kappa$  BP-HRP (Cruz Marker): sc-516102-CM (dilution range: 1:1000-1:10000), Cruz Marker™ Molecular Weight Standards: sc-2035, UltraCruz® Blocking Reagent: sc-516214 and Western Blotting Luminol Reagent: sc-2048. 2) Immunoprecipitation: use Protein A/G PLUS-Agarose: sc-2003 (0.5 ml agarose/2.0 ml). 3) Immunofluorescence: use m-IgG $\kappa$  BP-FITC: sc-516140 or m-IgG $\kappa$  BP-PE: sc-516141 (dilution range: 1:50-1:200) with UltraCruz® Mounting Medium: sc-24941 or UltraCruz® Hard-set Mounting Medium: sc-359850.

## DATA



ACTH/CLIP (E-12): sc-365831. Western blot analysis of ACTH/CLIP expression in rat adrenal gland tissue extract.



ACTH/CLIP (E-12): sc-365831. Immunofluorescence staining of methanol-fixed HeLa cells showing nuclear and cytoplasmic localization.

## SELECT PRODUCT CITATIONS

- Feng, B., et al. 2018. Hypothalamic POMC expression is required for peripheral Insulin action on hepatic gluconeogenesis through regulating STAT3 in sepsis rats. *J. Cell. Mol. Med.* 22: 1696-1707.

## STORAGE

Store at 4° C, \*\*DO NOT FREEZE\*\*. Stable for one year from the date of shipment. Non-hazardous. No MSDS required.

## PROTOCOLS

See our web site at [www.scbt.com](http://www.scbt.com) for detailed protocols and support products.



See **ACTH/CLIP (F-3): sc-373878** for ACTH/CLIP antibody conjugates, including AC, HRP, FITC, PE, and Alexa Fluor® 488, 546, 594, 647, 680 and 790.