

# IL-28/29 (H-1): sc-365834

## BACKGROUND

The interleukins are a broad family of well characterized cytokines, primarily of hematopoietic cell origin. As new cytokines are molecularly characterized, they are assigned an IL number to maintain a standard nomenclature. The interleukins are secreted by immune cells (mainly macrophages, B-cells or T-cells) that regulate a wide range of immune system functions. The functions of different interleukins vary from the regulation of inflammatory and immune responses to the regulation of other interleukins. Induced by viral infection and show antiviral activity, IL-28A, IL-28B and IL-29 are closely related genes that form a cytokine gene cluster on human chromosome region mapped to 19q13.2. IL-28A and IL-28B may play a role in antiviral immunity through up-regulation of MHC class I antigen expression and act as ligands for the heterodimeric class II cytokine receptor composed of IL-10R $\beta$  and IL-28R.

## REFERENCES

- Sheppard, P., et al. 2003. IL-28, IL-29 and their class II cytokine receptor IL-28R. *Nat. Immunol.* 4: 63-68.
- Pestka, S., et al. 2004. IL-10 and related cytokines and receptors. *Annu. Rev. Immunol.* 22: 929-979.
- Pestka, S., et al. 2004. Interferons, interferon-like cytokines, and their receptors. *Immunol. Rev.* 202: 8-32.
- Bartlett, N.W., et al. 2004. A new member of the interleukin-10 related cytokine family encoded by a poxvirus. *J. Gen. Virol.* 85: 1401-1412.
- Donnelly, R.P., et al. 2004. The expanded family of class II cytokines that share the IL-10 receptor-2 (IL-10R2) chain. *J. Leukoc. Biol.* 76: 314-321.
- Logsdon, N.J., et al. 2004. The IL-10R2 binding hot spot on IL-22 is located on the N-terminal helix and is dependent on N-linked glycosylation. *J. Mol. Biol.* 342: 503-514.

## CHROMOSOMAL LOCATION

Genetic locus: IFNL2/IFNL3/IFNL1 (human) mapping to 19q13.2.

## SOURCE

IL-28/29 (H-1) is a mouse monoclonal antibody raised against amino acids 1-200 representing full length IL-28 of human origin.

## PRODUCT

Each vial contains 200  $\mu$ g IgG<sub>2a</sub> kappa light chain in 1.0 ml of PBS with < 0.1% sodium azide and 0.1% gelatin.

IL-28/29 (H-1) is available conjugated to agarose (sc-365834 AC), 500  $\mu$ g/0.25 ml agarose in 1 ml, for IP; to HRP (sc-365834 HRP), 200  $\mu$ g/ml, for WB, IHC(P) and ELISA; to either phycoerythrin (sc-365834 PE), fluorescein (sc-365834 FITC), Alexa Fluor® 488 (sc-365834 AF488), Alexa Fluor® 546 (sc-365834 AF546), Alexa Fluor® 594 (sc-365834 AF594) or Alexa Fluor® 647 (sc-365834 AF647), 200  $\mu$ g/ml, for WB (RGB), IF, IHC(P) and FCM; and to either Alexa Fluor® 680 (sc-365834 AF680) or Alexa Fluor® 790 (sc-365834 AF790), 200  $\mu$ g/ml, for Near-Infrared (NIR) WB, IF and FCM.

Alexa Fluor® is a trademark of Molecular Probes, Inc., Oregon, USA

## APPLICATIONS

IL-28/29 (H-1) is recommended for detection of IL-28A, IL-28B and IL-29 of human origin by Western Blotting (starting dilution 1:100, dilution range 1:100-1:1000), immunoprecipitation [1-2  $\mu$ g per 100-500  $\mu$ g of total protein (1 ml of cell lysate)], immunofluorescence (starting dilution 1:50, dilution range 1:50-1:500) and solid phase ELISA (starting dilution 1:30, dilution range 1:30-1:3000).

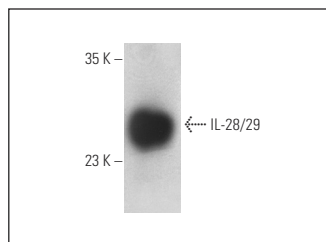
Molecular Weight of IL-28: 25 kDa.

Molecular Weight of IL-29: 36 kDa.

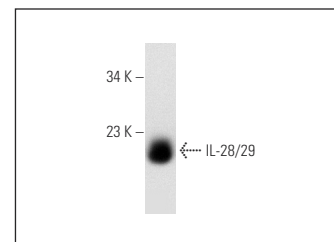
## RECOMMENDED SUPPORT REAGENTS

To ensure optimal results, the following support reagents are recommended: 1) Western Blotting: use m-IgG $\kappa$  BP-HRP: sc-516102 or m-IgG $\kappa$  BP-HRP (Cruz Marker): sc-516102-CM (dilution range: 1:1000-1:10000), Cruz Marker™ Molecular Weight Standards: sc-2035, UltraCruz® Blocking Reagent: sc-516214 and Western Blotting Luminol Reagent: sc-2048. 2) Immunoprecipitation: use Protein A/G PLUS-Agarose: sc-2003 (0.5 ml agarose/2.0 ml). 3) Immunofluorescence: use m-IgG $\kappa$  BP-FITC: sc-516140 or m-IgG $\kappa$  BP-PE: sc-516141 (dilution range: 1:50-1:200) with UltraCruz® Mounting Medium: sc-24941 or UltraCruz® Hard-set Mounting Medium: sc-359850.

## DATA



IL-28/29 (H-1) HRP: sc-365834 HRP. Direct western blot analysis of human recombinant IL-28/29.



IL-28/29 (H-1): sc-365834. Western blot analysis of human recombinant IL-28/29.

## SELECT PRODUCT CITATIONS

- Zhang, M.Q., et al. 2018. Differential effects of autophagy-related 10 protein on HCV replication and autophagy flux are mediated by its cysteine<sup>44</sup> and cysteine<sup>135</sup>. *Front. Immunol.* 9: 2176.
- Li, X., et al. 2022. Coinfection of porcine circovirus 2 and pseudorabies virus enhances immunosuppression and inflammation through NF $\kappa$ B, JAK/STAT, MAPK, and NLRP3 pathways. *Int. J. Mol. Sci.* 23: 4469.

## STORAGE

Store at 4° C, \*\*DO NOT FREEZE\*\*. Stable for one year from the date of shipment. Non-hazardous. No MSDS required.

## RESEARCH USE

For research use only, not for use in diagnostic procedures.