

NELF-B (H-300): sc-366236

BACKGROUND

NELF-B (negative elongation factor B), also known as COBRA1 (cofactor of BRCA1), is a 580 amino acid protein that localizes to the nucleus and exists as a component of the multi-protein NELF complex, a structure which negatively regulates Pol II-dependent transcription elongation. Expressed in a variety of tissues, including liver, heart, kidney, lung, brain, placenta and pancreas, NELF-B is involved in controlling transcriptional pausing of Pol II and may be able to induce chromatin unfolding, possibly playing a role in tumorigenesis. The gene encoding NELF-B maps to human chromosome 9, which houses over 900 genes and comprises nearly 4% of the human genome. Hereditary hemorrhagic telangiectasia, which is characterized by harmful vascular defects, and Familial dysautonomia, are both associated with chromosome 9. Notably, chromosome 9 encompasses the largest interferon family gene cluster.

REFERENCES

- Hirosawa, M., Nagase, T., Ishikawa, K., Kikuno, R., Nomura, N. and Ohara, O. 1999. Characterization of cDNA clones selected by the GeneMark analysis from size-fractionated cDNA libraries from human brain. *DNA Res.* 6: 329-336.
- Ye, Q., Hu, Y.F., Zhong, H., Nye, A.C., Belmont, A.S. and Li, R. 2001. BRCA1-induced large-scale chromatin unfolding and allele-specific effects of cancer-predisposing mutations. *J. Cell Biol.* 155: 911-921.
- Narita, T., Yamaguchi, Y., Yano, K., Sugimoto, S., Chanarat, S., Wada, T., Kim, D.K., Hasegawa, J., Omori, M., Inukai, N., Endoh, M., Yamada, T. and Handa, H. 2003. Human transcription elongation factor NELF: identification of novel subunits and reconstitution of the functionally active complex. *Mol. Cell. Biol.* 23: 1863-1873.
- Zhong, H., Zhu, J., Zhang, H., Ding, L., Sun, Y., Huang, C. and Ye, Q. 2004. COBRA1 inhibits AP-1 transcriptional activity in transfected cells. *Biochem. Biophys. Res. Commun.* 325: 568-573.
- McChesney, P.A., Aiyar, S.E., Lee, O.J., Zaika, A., Moskaluk, C., Li, R. and El-Rifai, W. 2006. Cofactor of BRCA1: a novel transcription factor regulator in upper gastrointestinal adenocarcinomas. *Cancer Res.* 66: 1346-1353.

CHROMOSOMAL LOCATION

Genetic locus: COBRA1 (human) mapping to 9q34.3; Cobra1 (mouse) mapping to 2 A3.

SOURCE

NELF-B (H-300) is a rabbit polyclonal antibody raised against amino acids 1-300 mapping at the N-terminus of NELF-B of human origin.

PRODUCT

Each vial contains 200 µg IgG in 1.0 ml of PBS with < 0.1% sodium azide and 0.1% gelatin.

STORAGE

Store at 4° C, ****DO NOT FREEZE****. Stable for one year from the date of shipment. Non-hazardous. No MSDS required.

APPLICATIONS

NELF-B (H-300) is recommended for detection of NELF-B of mouse, rat and human origin by Western Blotting (starting dilution 1:200, dilution range 1:100-1:1000), immunoprecipitation [1-2 µg per 100-500 µg of total protein (1 ml of cell lysate)], immunofluorescence (starting dilution 1:50, dilution range 1:50-1:500) and solid phase ELISA (starting dilution 1:30, dilution range 1:30-1:3000).

NELF-B (H-300) is also recommended for detection of NELF-B in additional species, including canine, bovine, porcine and avian.

Suitable for use as control antibody for NELF-B siRNA (h): sc-75896, NELF-B siRNA (m): sc-75897, NELF-B shRNA Plasmid (h): sc-75896-SH, NELF-B shRNA Plasmid (m): sc-75897-SH, NELF-B shRNA (h) Lentiviral Particles: sc-75896-V and NELF-B shRNA (m) Lentiviral Particles: sc-75897-V.

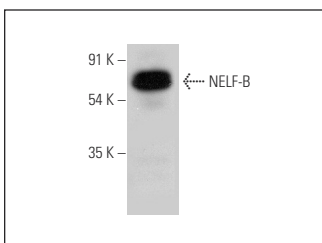
Molecular Weight of NELF-B: 62 kDa.

Positive Controls: Sol8 cell lysate: sc-2249 or human heart extract: sc-363763.

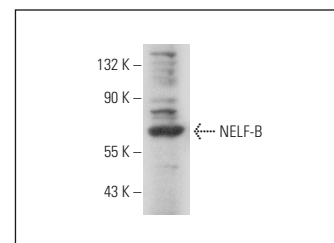
RECOMMENDED SECONDARY REAGENTS

To ensure optimal results, the following support (secondary) reagents are recommended: 1) Western Blotting: use goat anti-rabbit IgG-HRP: sc-2004 (dilution range: 1:2000-1:100,000) or Cruz Marker™ compatible goat anti-rabbit IgG-HRP: sc-2030 (dilution range: 1:2000-1:5000), Cruz Marker™ Molecular Weight Standards: sc-2035, TBS Blotto A Blocking Reagent: sc-2333 and Western Blotting Luminol Reagent: sc-2048. 2) Immunoprecipitation: use Protein A/G PLUS-Agarose: sc-2003 (0.5 ml agarose/2.0 ml). 3) Immunofluorescence: use goat anti-rabbit IgG-FITC: sc-2012 (dilution range: 1:100-1:400) or goat anti-rabbit IgG-TR: sc-2780 (dilution range: 1:100-1:400) with UltraCruz™ Mounting Medium: sc-24941.

DATA



NELF-B (H-300): sc-366236. Western blot analysis of NELF-B expression in human heart tissue extract.



NELF-B (H-300): sc-366236. Western blot analysis of NELF-B expression in Sol8 whole cell lysate.

RESEARCH USE

For research use only, not for use in diagnostic procedures.

PROTOCOLS

See our web site at www.scbt.com or our catalog for detailed protocols and support products.