

## c-Rel (D-6): sc-373713



The Power to Question

## BACKGROUND

c-Rel is the cellular cognate of v-Rel, the avian reticuloendotheliosis virus strain T transforming gene. v-Rel encodes a phosphoprotein that is located in the cytoplasm of transformed spleen cells and in the nucleus of non-transformed fibroblasts, in contrast to the c-Rel protein, which is cytoplasmic. c-Rel has been shown to represent a constituent of the  $\kappa$ B site binding transcription factor NF $\kappa$ B, which plays a crucial role in the expression of immunoglobulin  $\kappa$  light chain gene. In contrast to c-Rel, v-Rel is truncated in its C-terminal transactivation domain and does not appear to function as a transcriptional transactivator. It has thus been postulated that v-Rel may interfere with the normal transcription of NF $\kappa$ B regulated genes and thus cause transformation by a mechanism analogous to v-ErbA, which binds to the thyroid hormone-responsive region in certain erythroid genes needed for differentiation, but cannot be activated by thyroid hormone.

## CHROMOSOMAL LOCATION

Genetic locus: REL (human) mapping to 2p16.1; Rel (mouse) mapping to 11 A3.2.

## SOURCE

c-Rel (D-6) is a mouse monoclonal antibody specific for an epitope mapping between amino acids 143-184 within the N-terminus of c-Rel of human origin.

## PRODUCT

Each vial contains 200  $\mu$ g IgG $\gamma$  kappa light chain in 1.0 ml of PBS with < 0.1% sodium azide and 0.1% gelatin. Also available as TransCruz reagent for Gel Supershift and ChIP applications, sc-373713 X, 200  $\mu$ g/0.1 ml.

Blocking peptide available for competition studies, sc-373713 P, (100  $\mu$ g peptide in 0.5 ml PBS containing < 0.1% sodium azide and 0.2% stabilizer protein).

## APPLICATIONS

c-Rel (D-6) is recommended for detection of c-Rel p75 of mouse, rat and human origin by Western Blotting (starting dilution 1:100, dilution range 1:100-1:1000), immunoprecipitation [1-2  $\mu$ g per 100-500  $\mu$ g of total protein (1 ml of cell lysate)], immunofluorescence (starting dilution 1:50, dilution range 1:50-1:500) and solid phase ELISA (starting dilution 1:30, dilution range 1:30-1:3000).

Suitable for use as control antibody for c-Rel siRNA (h): sc-29857, c-Rel siRNA (m): sc-29858, c-Rel shRNA Plasmid (h): sc-29857-SH, c-Rel shRNA Plasmid (m): sc-29858-SH, c-Rel shRNA (h) Lentiviral Particles: sc-29857-V and c-Rel shRNA (m) Lentiviral Particles: sc-29858-V.

c-Rel (D-6) X TransCruz antibody is recommended for Gel Supershift and ChIP applications.

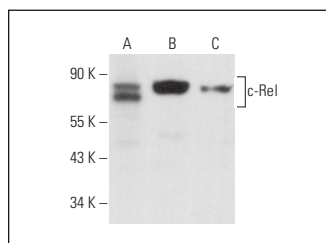
Molecular Weight of c-Rel: 75 kDa.

Positive Controls: RAW 264.7 whole cell lysate: sc-2211, MM-142 cell lysate: sc-2246 or KNRK whole cell lysate: sc-2214.

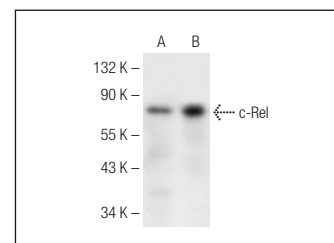
## RECOMMENDED SUPPORT REAGENTS

To ensure optimal results, the following support reagents are recommended: 1) Western Blotting: use m-IgG $\kappa$  BP-HRP: sc-516102 or m-IgG $\kappa$  BP-HRP (Cruz Marker): sc-516102-CM (dilution range: 1:1000-1:10000), Cruz Marker™ Molecular Weight Standards: sc-2035, UltraCruz® Blocking Reagent: sc-516214 and Western Blotting Luminol Reagent: sc-2048. 2) Immunoprecipitation: use Protein A/G PLUS-Agarose: sc-2003 (0.5 ml agarose/2.0 ml). 3) Immunofluorescence: use m-IgG $\kappa$  BP-FITC: sc-516140 or m-IgG $\kappa$  BP-PE: sc-516141 (dilution range: 1:50-1:200) with UltraCruz® Mounting Medium: sc-24941 or UltraCruz® Hard-set Mounting Medium: sc-359850.

## DATA



c-Rel (D-6): sc-373713. Western blot analysis of c-Rel expression in RAW 264.7 (A), U-698-M (B) and Raji (C) whole cell lysates.



c-Rel (D-6): sc-373713. Western blot analysis of c-Rel expression in KNRK (A) and MM-142 (B) whole cell lysates.

## SELECT PRODUCT CITATIONS

1. Zhou, X., et al. 2015. Leptin inhibits the apoptosis of endometrial carcinoma cells through activation of the nuclear factor  $\kappa$ B-inducing kinase/ $\kappa$ B kinase pathway. *Int. J. Gynecol. Cancer* 25: 770-778.

## STORAGE

Store at 4° C, \*\*DO NOT FREEZE\*\*. Stable for one year from the date of shipment. Non-hazardous. No MSDS required.

## RESEARCH USE

For research use only, not for use in diagnostic procedures.

## PROTOCOLS

See our web site at [www.scbt.com](http://www.scbt.com) for detailed protocols and support products.



See **c-Rel (B-6): sc-6955** for c-Rel antibody conjugates, including AC, HRP, FITC, PE, Alexa Fluor® 488, 546, 594, 647, 680 and 790.