

Alpha 4 (B-5): sc-373719

BACKGROUND

Alpha 4 is a cytoplasmic protein which associates with surface IgM-receptor and may help regulate signal transduction. Alpha 4 regulates the catalytic activity of type 2A-related serine/threonine phosphatases (PP2A) and interacts with MID1, the product of the gene mutated in X-linked Opitz GBBB syndrome. PP2Ac accumulation is caused by an impairment of E3 ubiquitin ligase activity of the MID1 protein which normally targets PP2Ac for degradation through binding to its Alpha 4 regulatory subunit. Patients with Opitz GBBB syndrome suffer from a variable array of developmental defects including craniofacial, cardiac and genital anomalies. Alpha 4 is present at highest levels in heart, skeletal muscle and pancreas, and is a member of the IGBP1/Tap42 family.

REFERENCES

1. Trockenbacher, A., et al. 2001. MID1, mutated in Opitz syndrome, encodes an ubiquitin ligase that targets phosphatase 2A for degradation. *Nat. Genet.* 29: 287-294.
2. Liu, J., et al. 2001. Phosphorylation and microtubule association of the Opitz syndrome protein MID1 is regulated by protein phosphatase 2A via binding to the regulatory subunit Alpha 4. *Proc. Natl. Acad. Sci. USA* 98: 6650-6655.
3. Everett, A.D., et al. 2002. Developmental expression of Alpha 4 protein phosphatase regulatory subunit in tissues affected by Opitz syndrome. *Dev. Dyn.* 224: 461-464.
4. Short, K.M., et al. 2002. MID1 and MID2 homo- and heterodimerise to tether the Rapamycin-sensitive PP2A regulatory subunit, Alpha 4, to microtubules: implications for the clinical variability of X-linked Opitz GBBB syndrome and other developmental disorders. *BMC Cell Biol.* 3: 1.

CHROMOSOMAL LOCATION

Genetic locus: IGBP1 (human) mapping to Xq13.1; Igbp1 (mouse) mapping to X C3.

SOURCE

Alpha 4 (B-5) is a mouse monoclonal antibody specific for an epitope mapping between amino acids 259-294 near the C-terminus of Alpha 4 of human origin.

PRODUCT

Each vial contains 200 µg IgG_{2b} kappa light chain in 1.0 ml of PBS with < 0.1% sodium azide and 0.1% gelatin.

Alpha 4 (B-5) is available conjugated to agarose (sc-373719 AC), 500 µg/0.25 ml agarose in 1 ml, for IP; to HRP (sc-373719 HRP), 200 µg/ml, for WB, IHC(P) and ELISA; to either phycoerythrin (sc-373719 PE), fluorescein (sc-373719 FITC), Alexa Fluor[®] 488 (sc-373719 AF488), Alexa Fluor[®] 546 (sc-373719 AF546), Alexa Fluor[®] 594 (sc-373719 AF594) or Alexa Fluor[®] 647 (sc-373719 AF647), 200 µg/ml, for WB (RGB), IF, IHC(P) and FCM; and to either Alexa Fluor[®] 680 (sc-373719 AF680) or Alexa Fluor[®] 790 (sc-373719 AF790), 200 µg/ml, for Near-Infrared (NIR) WB, IF and FCM.

Blocking peptide available for competition studies, sc-373719 P, (100 µg peptide in 0.5 ml PBS containing < 0.1% sodium azide and 0.2% stabilizer protein).

APPLICATIONS

Alpha 4 (B-5) is recommended for detection of Alpha 4 of mouse, rat and human origin by Western Blotting (starting dilution 1:100, dilution range 1:100-1:1000), immunoprecipitation [1-2 µg per 100-500 µg of total protein (1 ml of cell lysate)], immunofluorescence (starting dilution 1:50, dilution range 1:50-1:500) and solid phase ELISA (starting dilution 1:30, dilution range 1:30-1:3000).

Suitable for use as control antibody for Alpha 4 siRNA (h): sc-44648, Alpha 4 siRNA (m): sc-44649, Alpha 4 shRNA Plasmid (h): sc-44648-SH, Alpha 4 shRNA Plasmid (m): sc-44649-SH, Alpha 4 shRNA (h) Lentiviral Particles: sc-44648-V and Alpha 4 shRNA (m) Lentiviral Particles: sc-44649-V.

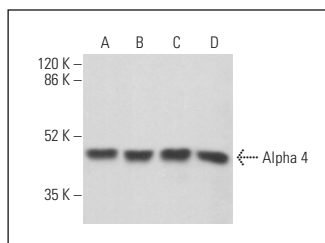
Molecular Weight of Alpha 4: 45 kDa.

Positive Controls: Jurkat whole cell lysate: sc-2204, K-562 whole cell lysate: sc-2203 or A549 cell lysate: sc-2413.

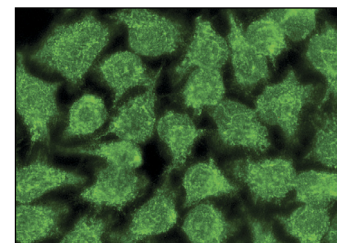
RECOMMENDED SUPPORT REAGENTS

To ensure optimal results, the following support reagents are recommended: 1) Western Blotting: use m-IgGκ BP-HRP: sc-516102 or m-IgGκ BP-HRP (Cruz Marker): sc-516102-CM (dilution range: 1:1000-1:10000), Cruz Marker[™] Molecular Weight Standards: sc-2035, UltraCruz[®] Blocking Reagent: sc-516214 and Western Blotting Luminol Reagent: sc-2048. 2) Immunoprecipitation: use Protein A/G PLUS-Agarose: sc-2003 (0.5 ml agarose/2.0 ml). 3) Immunofluorescence: use m-IgGκ BP-FITC: sc-516140 or m-IgGκ BP-PE: sc-516141 (dilution range: 1:50-1:200) with UltraCruz[®] Mounting Medium: sc-24941 or UltraCruz[®] Hard-set Mounting Medium: sc-359850.

DATA



Alpha 4 (B-5): sc-373719. Western blot analysis of Alpha 4 expression in K-562 (A), Jurkat (B), A549 (C) and Caco-2 (D) whole cell lysates. Detection reagent used: m-IgGκ BP-HRP: sc-516102.



Alpha 4 (B-5): sc-373719. Immunofluorescence staining of methanol-fixed HeLa cells showing nuclear and cytoplasmic localization.

STORAGE

Store at 4° C, ****DO NOT FREEZE****. Stable for one year from the date of shipment. Non-hazardous. No MSDS required.

RESEARCH USE

For research use only, not for use in diagnostic procedures.

Alexa Fluor[®] is a trademark of Molecular Probes, Inc., Oregon, USA